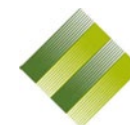


Walkway Reserves



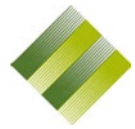
6.82 Katikati Foreshore Reserves

Location	Katikati Foreshore and Esplanade		Current Inventory	
Classification:	Local Purpose (Foreshore and Esplanade)		2 Boat ramps 1 Bridge 1 Jetties 8 Picnic tables 8 Seating 2 car parks Walkway	Basic Basic
ID	101, 381, 52, 147, 27, 33, 53, 269, 380, 6.			
Area	22.7776 Ha			
District Plan Zone	Rural			
Current State	Foreshore			
Previous RMP	Katikati Ward RMP August 2008			
Overview	Maintain and extend walkway/cycleway network. Acquire access ways.			
Grass Mowing Standard (Existing Reserves)	Levley Lane (0.7282 Ha) Type D – Does not exceed 90 mm grass height. Mowed to within 45 mm of ground	Preston Drive (1.0939 Ha) Type D – Does not exceed 90 mm grass height. Mowed to within 45 mm of ground		
Grass Mowing Standard (Foreshore Reserves)	Francis Drive (0.9014 Ha) Type D – Does not exceed 90 mm grass height. Mowed to within 45 mm of ground	Yoeman (0.4233 Ha) Type D – Does not exceed 90 mm grass height. Mowed to within 45 mm of ground	Riverlea Drive (0.4498 Ha) Type D – Does not exceed 90 mm grass height. Mowed to within 45 mm of ground	

Background:

- Non continuous esplanade reserves around the Katikati Peninsula foreshore.
- In some places access over private land occurs either by agreement or informally to link esplanade.
- A series of vehicular access points connect to some parts of the esplanade e.g. Levley Lane Reserve, Park Road Reserve and MacMillan Reserve.
- Esplanades incorporate and abut sensitive coastal margins and wildlife areas.
- Character of esplanade reserve varies in relation to adjoining land use – rural, rural residential, urban residential.

(Continued next page)



(Background from previous page)

- ❑ Residential development abuts esplanade in some parts.
- ❑ Some of the Katikati Foreshore Reserves are also separately listed, e.g. Levley Lane Reserve, MacMillan Reserve, Park Road Reserve, Preston Road Reserve, Pukakura Rd Esplanade Reserve, Tamawhariua, walkway/cycleway from Wills Road to Prospect Drive.

Reserve Issues:

- ❑ Pedestrian access to and around the coast.
- ❑ Preservation of natural character and protection of wildlife, wetlands and associated values.
- ❑ Securing sufficient width of esplanade to balance protection with public access.
- ❑ Formalisation of informal public access.
- ❑ Cost of high levels of service provision.
- ❑ Encroachment and boundary definition/fencing.
- ❑ Potential to develop circuit walkways/cycleway with multiple entrances to encourage people to exercise.

Reserve Management Policy:

- 6.82.1 Continue to secure remaining areas of esplanade reserve around the Katikati Peninsula (as identified in the District Plan) to achieve continuous pedestrian access and harbour protection.
- 6.82.2 Where existing access over private land facilitates the coastal walkway/cycleway connection, seek to secure some form of legal formalisation of this access including access to Tutaetaka.
- 6.82.3 Manage the coastal esplanade for the protection of the natural character and wildlife values of the Tauranga Harbour.
- 6.82.4 Consistent with the protection of the above values provide for continuous pedestrian/cycleway linkage around the Katikati Peninsula.
- 6.82.5 Develop a walkway/cycleway between the Yoeman Walkway, Riverlea Drive Reserve, Levley Lane Reserve, Francis Drive Reserve and Park Road Reserve next to the retirement village.
- 6.82.6 Plant low maintenance, self-sustaining species within the coastal esplanade. New planting should generally be limited to native riparian margin plantings and coastal native specimen trees.
- 6.82.7 Provide facilities including car parks, toilets, and rubbish bins in adjacent reserves.
- 6.82.8 Generic objectives for Local Purpose Reserves and generic policies apply.

Actions	Budget
Cycleway walkway development	Transport

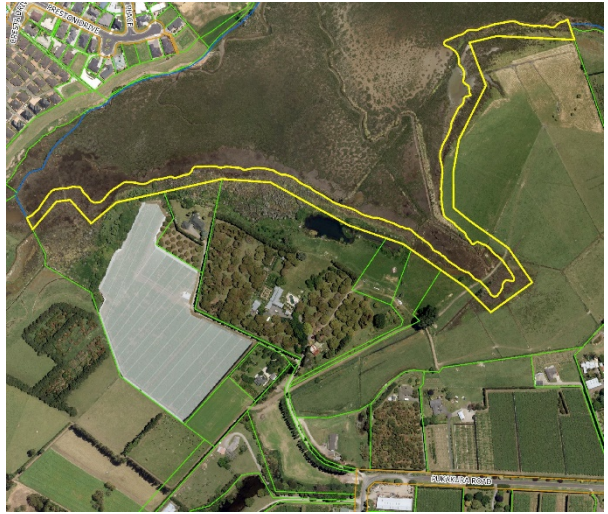




Yoeman Walkway



Pukakura Road Res



Preston Road Res



Levley Lane and Francis Drive



Tamawhariua Reserve



MacMillan Reserve





6.83 Kauri Point Foreshore

Location	Kauri Point, Katikati	Current Inventory	
Classification:	Local Purpose Esplanade		
ID	55		
Area	7.4575 Ha		
District Plan Zone	Rural		
Current State	Coastal foreshore, walkway/cycleway potential		
Previous RMP	Katikati Ward RMP August 2008		
Concept Plan	No		
Overview	Establish walkway/cycleway to Kauri Point in long term and a link with Ongare Point		

Background:

- Esplanade reserve on the south side of the Kauri Point Peninsula.
- Abuts SH2 but currently has no practical pedestrian access.
- Primary values relate to the preservation of the natural character of the Harbour environment.
- Part of T13/12 shrub land and forest of moderate wildlife and botanical value.

Reserve Management Issues:

- Inaccessibility
- Encroachment/grazing

Reserve Management Policy:

- 6.83.1 Maintain for harbour protection and wildlife/botanical conservation purposes.
- 6.83.2 Control encroachment and ensure no grazing of the coastal margins occurs across the esplanade.
- 6.83.3 Undertake control of exotic, plant pests, and where appropriate undertake native riparian planting.
- 6.83.4 Long-term development of walkway/cycleway from SH2 to Kauri Point.
- 6.83.5 Generic objectives for Local Purpose Reserves and generic policies apply.

Actions	Nil
----------------	-----

6.84 Matahui and Walker Road Foreshore Reserves, Katikati (Rural)

Location	Katikati (Rural)	Current Inventory	
Classification	Local Purpose Foreshore Reserves		
District Plan Zone	Rural		
ID	Nil		
LTP Category	Neighborhood Amenity Reserve		
Area	Ha		
Current State	Foreshore esplanade		
Previous RMP	Katikati Ward RMP August 2008		
Concept Plan	Nil		
Grass Mowing Standard	Nil		

Background:

- Access to beach and coastal environment.
- Opportunity for a walkway/cycleway along inner harbour.

Reserve Issues:

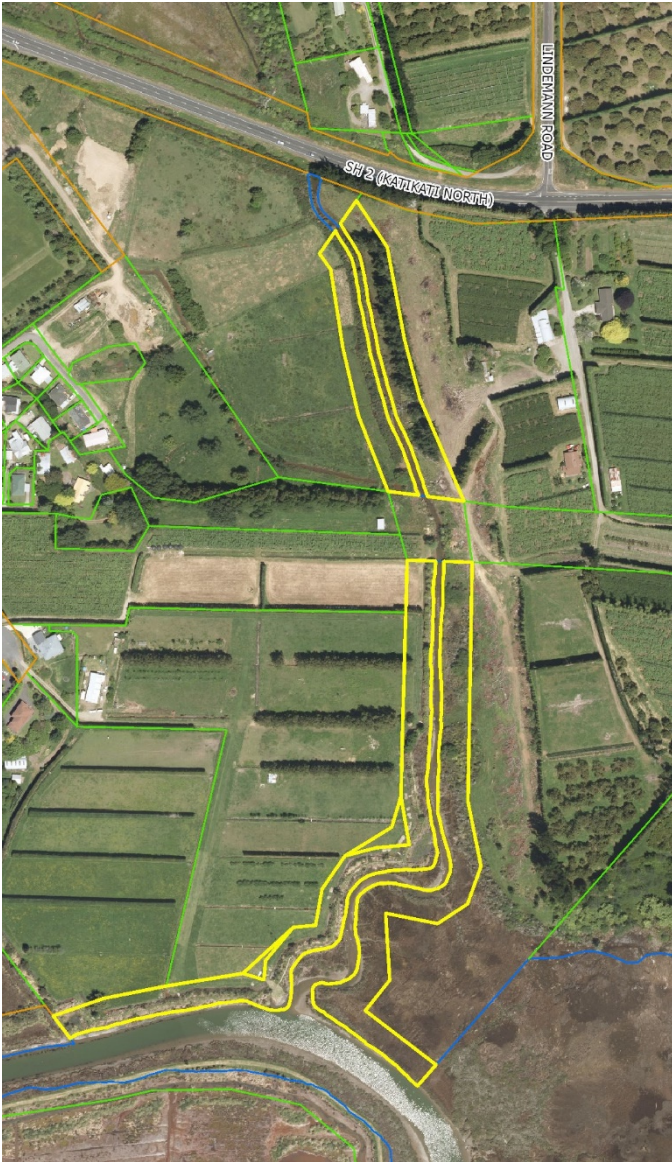
- Completion of the foreshore linkage along the peninsula and around the harbour.
- Acquire approval to cross freehold land to complete esplanade linkage.

Reserve Management Policy:

- 6.84.1 Maintain the significant landscape and natural character values of the coastal edge and foreshore.
- 6.84.2 Provide appropriate signage adjacent to roadways to improve awareness of walkways/cycle ways.
- 6.84.3 Continue to extend the coastal linkages based on community demand and resources.
- 6.84.4 Generic objectives for Local Purpose Reserves and generic policies apply.

Actions	Nil
----------------	-----





6.85 McKinney Stream Reserve

Location	State Highway, Katikati	Current Inventory	
Reserve Classification:	Local Purpose Esplanade		
ID	137		
Area	2.9109 Ha		
District Plan Zone	Rural		
Current State	Esplanade		
Previous RMP	Katikati Ward RMP August 2008		
Concept Plan	No		
Overview	Part of area has outstanding wildlife value & very high botanical value. Buffer strip to stream & wetland. Walkway/cycleway potential.		

Background:

- Esplanade reserve both sides of a section of McKinney Stream connecting to Uretara Stream in its tidal reaches north of the main road bridge.
- Inaccessible to pedestrians but has conservation and wildlife values.

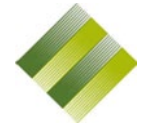
Reserve issues:

- Conservation management and protection of wildlife/botanical values.
- Plant pest control.

Reserve Management Policy:

- 6.85.1 Maintain for conservation values, no development or access.
- 6.85.2 Provide appropriate signage adjacent to roadways to improve awareness of walkway/cycleway.
- 6.85.3 Undertake control of plant pests and native riparian planting as required.
- 6.85.4 Generic objectives for Local Purpose reserves and generic policies apply.

Actions	Nil
----------------	-----



6.86 Preston Drive Local Purpose Reserves

Location	Preston Drive, Katikati	Current Inventory	
Classification:	Local Purpose Drainage. Access way, Utility and Esplanade Reserves	Pathway	
ID	1307		
Area	1.2981 Ha		
District Plan Zone	Residential		
Current State	Drainage Reserve		
Previous RMP	Katikati Ward RMP August 2008		
Concept Plan	No		
Overview	Walkway/cycleway		
Grass Mowing Standard (Includes adjoining LP Reserves)	(1.0939 Ha) Type D – Does not exceed 90 mm grass height. Mowed to within 45 mm of the ground		

Background:

- Refer to the “Katikati Foreshore Reserves”
- Develop harbour walkway/cycleway.
- Public riparian access.
- Located off Preston Drive with connection to Foreshore Reserves and has walkway/cycleway potential.

Reserve Issues:

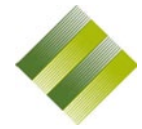
- Coastal erosion.

Reserve Management Policy:

- 6.86.1 Continue to maintain the reserve in partnership with the neighbourhood as harbour access and a recreational facility.
- 6.86.2 Provide appropriate signage adjacent to roadways to improve awareness of walkway/cycleway.
- 6.86.3 Extend pedestrian linkages to other walkway/cycleway connections.
- 6.86.4 Where public recreation, amenity and natural character values are not adversely affected, provide for community enhancement and maintenance of reserve land.
- 6.86.5 Provide signage adjacent to roadways to improve awareness of walkway/cycleway.
- 6.86.6 Generic objectives for Local Purpose Reserves and generic policies apply.

Actions	Nil
----------------	-----





6.87 Pukakura Road Esplanade Reserve

Location	Pukakura Road, Katikati	Current Inventory	
Classification:	Local Purpose Esplanade Reserve		
ID	33		
Area	3.5666 Ha		
District Plan Zone	Rural		
Current State	Esplanade		
Previous RMP	Katikati Ward RMP August 2008		
Concept Plan	No		
Overview	Buffer strip to protect wetland, walkway/cycleway		

Background:

- Refer to the "Katikati Foreshore Reserves"
- Presently land locked and inaccessible.
- Harbour margins have relatively high wildlife values and require protection.

Reserve Issues

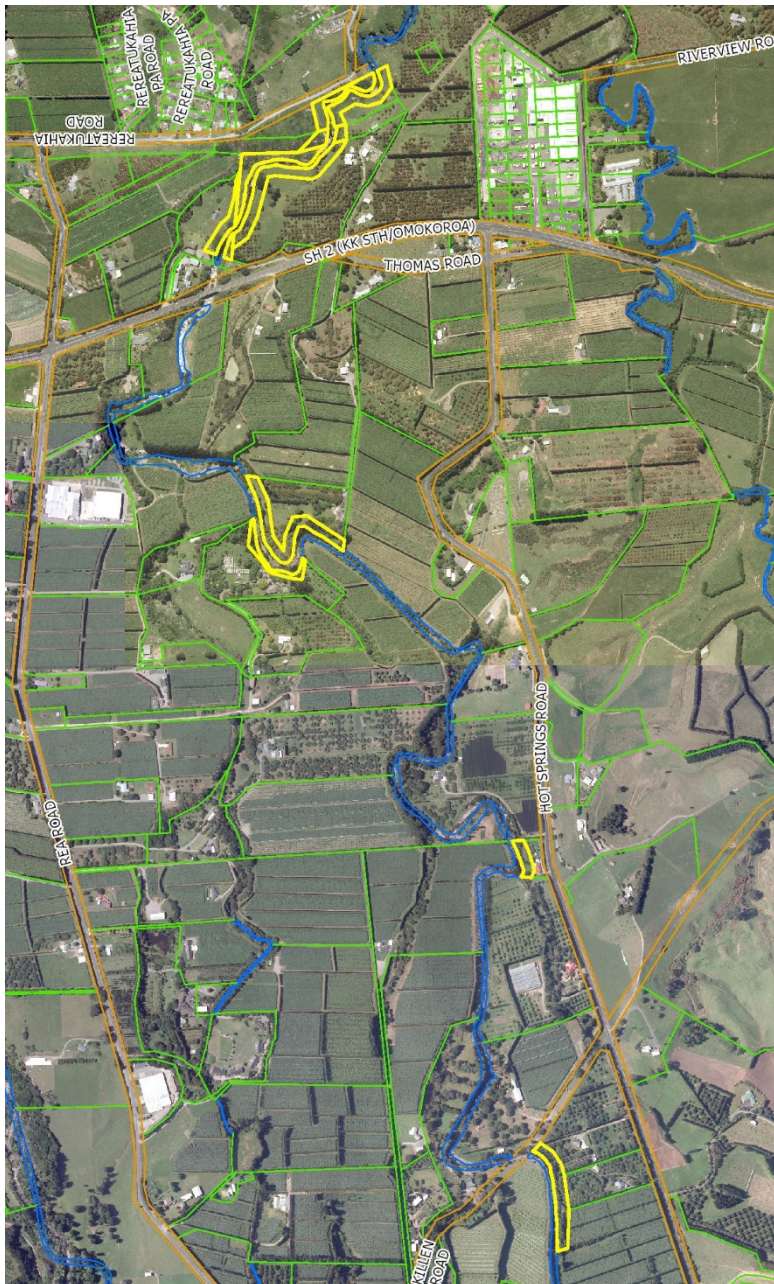
- Conservation management, high wildlife and botanical values.
- Future pedestrian access around the peninsula will need to address conservation values/protection.
- Encroachment/grazing.

Reserve Management Policy:

- 6.87.1 Continue to protect wildlife values.
- 6.87.2 Provide appropriate signage adjacent to roadways to improve awareness of walkway/cycleway.
- 6.87.3 Fence to avoid grazing of harbour margins and prevent encroachment.
- 6.87.4 Undertake plant pest control and native riparian planting as appropriate.
- 6.87.5 Generic objectives for Local Purpose Reserves and generic policies apply.

Actions	Nil
----------------	-----





6.88 Rereatukahia Stream Reserve

Location	State Highway 2, Katikati	Current Inventory	
Classification:	Local Purpose Esplanade Reserve		
ID	180		
Area	3.8895 Ha		
District Plan Zone	Rural		
Previous RMP	Katikati Ward RMP August 2008		
Concept Plan	No		
Overview	Potential river walkway/cycleway along Rereatukahia Stream to Kaimai – Mamaku Forest Park		

Background:

- Comprises a series of small and fragmented esplanade reserve areas located along the Rereatukahia Stream.
- Have riparian margin habitat and in some cases fishing access values.

Reserve Issues:

- Conservation management in association with Department of Conservation.
- Access for fishing

Reserve Management Policy:

- 6.88.1 Maintain for conservation values and where appropriate recreational fishing access.
- 6.88.2 Undertake plant pest control and associated native riparian planting as appropriate.
- 6.88.3 Provide appropriate signage adjacent to roadways to improve awareness of walkway/cycleway.
- 6.88.4 Liaise with Department of Conservation over ongoing management issues.
- 6.88.5 Generic objectives for Local Purpose Reserves and generic policies apply.

Actions	Cost Estimate	Priority
Land acquisition	Land budget	Opportunity



6.89 Sharp Road Foreshore Reserve

Location	Sharp Road, Katikati	Current Inventory	
Classification	Local Purpose Foreshore Reserves	Footpath	
ID	Nil	2 Picnic tables	
Area	6.0340 Ha		
District Plan Zone	Rural		
Current State	Esplanade		
Previous RMP	Katikati Ward RMP August 2008		
Concept Plan	Nil		
Overview	Walkway/cycleway potential		

Background:

- Extends around the majority of the peninsula.
- Opportunity for a walkway/cycleway to the adjoining Sharp Road Landing Reserve.

Reserve Issues:

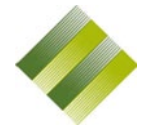
- Completion of the esplanade linkage around the peninsula.
- Acquire approval to cross freehold land to complete esplanade linkage.

Reserve Management Policy:

- 6.89.1 Maintain the significant landscape and natural character values of the coastal edge and esplanade.
- 6.89.2 Provide appropriate signage adjacent to roadways to improve awareness of walkway/cycleway.
- 6.89.3 Continue to extend the coastal linkages based on community demand and resources.
- 6.89.4 Generic objectives for Local Purpose Reserves and generic policies apply.

Actions	Cost Estimate	Priority
Access across private land		Opportunity





6.90 Stokes Road Landing and Local Purpose Reserves

Location	Stokes Road, Katikati North	Current Inventory	
Classification	Landing, L P Foreshore, Esplanade Road and Road Reserves		
ID	51		
Area	1.9852 Ha		
District Plan Zone	Rural		
Current State	Landing reserve with esplanade reserves		
Previous RMP	Katikati Ward RMP August 2008		
Concept Plan	Nil		
Overview	Walkway/cycleway potential		
Issue	Lack of continuous connection.		

Background:

- Opportunity for a walkway/cycleway from Stoke Road along inner harbour.

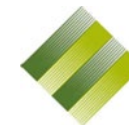
Reserve Issues:

- Completion of the esplanade linkage along the peninsula to Te Kauri.
- Acquire approval to cross freehold land to complete esplanade linkage.

Reserve Management Policy:

- 6.90.1 Maintain the significant landscape and natural character values of the coastal edge and esplanade.
- 6.90.2 Continue to extend the coastal linkages based on community demand and resources.
- 6.90.3 Provide appropriate signage adjacent to roadways to improve awareness of walkway/cycleway.
- 6.90.4 Generic objectives for Local Purpose Reserves and generic policies apply.

Actions	Nil
----------------	-----



6.91 Tanners Point Foreshore Reserve

Location	Tanners Point Road, Katikati	Current Inventory	
Classification:	Recreation and Local Purpose Reserve	1 Seat Walkway	Basic
ID	46		
Area	8.2602 Ha		
District Plan Zone	Rural		
Current State	Walkway/cycleway, harbour edge		
Previous RMP	Katikati Ward RMP August 2008		
Concept Plan	December 2002		
Overview	Extend walkway/cycleway around coast		
Grass Mowing Standard	(.2830 Ha) Type D – Does not exceed 90 mm grass height. Mowed to within 45 mm of the ground		



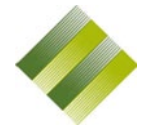
Background:

- Extends around the majority of the Tanners Point Peninsula.
- Adjoins a Department of Conservation marginal strip.
- Formed walkway extends from the end of Tanners Point Road around the headland to the edge of the residential area.
- Main access point is via Tanners Point Utility Reserve.
- Small jetty and pontoon, vehicular access controlled by bollards.
- Coastal escarpment identified as a significant landscape feature (S12) in the District Plan.
- Includes U13/22-23, an area of forest and tree land with potential wildlife value and moderate botanical value.

Reserve Issues:

- Completion of the esplanade linkage to Tahawai Reserve.
- Expansion of the walkway/cycleway.
- Protection of coastal Pohutukawa clad escarpment.

(Continued next page)



(From previous page)

Reserve Management Policy:

- 6.91.1 Maintain the significant landscape and natural character values of the coastal edge and esplanade.
- 6.91.2 Provide appropriate signage adjacent to roadways to improve awareness of walkway/cycleway.
- 6.91.3 Manage encroachment and grazing of coastal margin across the esplanade.
- 6.91.4 Continue to extend the coastal walkway/cycleway based on community demand and resources and in liaison with DoC.
- 6.91.5 Generic objectives for Local Purpose Reserves and generic policies apply.

Actions	Cost Estimate	Priority
Walkway/cycleway – new, basic	Not costed	



6.92 Tetley Road Foreshore Reserves

Location	Tetley Road, Katikati	Current Inventory	
Reserve Classification	Local Purpose Foreshore Reserve		
ID	19		
Area	6.9782 Ha		
District Plan Zone	Rural		
Current State	Foreshore		
Previous RMP	Katikati Ward RMP August 2008		
Concept Plan	Nil		
Overview	Walkway/cycleway potential		

Background:

- Opportunity for a walkway/cycleway from Stoke Road along inner harbour.

Reserve Issues:

- Completion of the esplanade linkage along the peninsula and around the harbour.
- Acquire approval to cross freehold land to complete esplanade linkage.

Reserve Management Policy:

- 6.92.1 Maintain the significant landscape and natural character values of the coastal edge and esplanade.
- 6.92.2 Provide appropriate signage adjacent to roadways to improve awareness of walkway/cycleway.
- 6.92.3 Continue to extend the coastal linkages based on community demand and resources.
- 6.92.4 Generic objectives for Local Purpose Reserves and generic policies apply.

Actions	Nil
----------------	-----



6.93 Tuapiro Estuary Esplanade Reserves

Location	Tuapiro Road, Tuapiro	Current Inventory	
Classification:	Recreation, Local Purpose Esplanade, Foreshore and Road Reserves		
ID	Nil		
Area	9.1994 Ha		
District Plan Zone	Rural		
Current State	Estuary esplanade reserves		
Previous RMP	Katikati Ward RMP August 2008		
Concept Plan	Nil		
Overview	Walkway/cycleway potential		

Background:

- Develop walkway/cycleway.
- Public riparian access.

Reserve Issues:

- Coastal erosion.

Reserve Management Policy:

- 6.93.1 Continue to maintain the reserve in partnership with the neighbourhood as harbour access and a recreational facility.
- 6.93.2 Extend walkway/cycleway connections to other pedestrian linkages.
- 6.93.3 Where public recreation, amenity and natural character values are not adversely affected provide for community enhancement and maintenance of reserve land.
- 6.93.4 Provide appropriate signage adjacent to roadways to improve awareness of walkway/cycleway.
- 6.93.5 Generic objectives for Recreation Reserves and generic policies apply.

Actions	Nil
----------------	-----



6.94 Wills Road to Prospect Drive Walkway/cycleway

Location	Wills Road and Prospect Drive, Katikati	Current Inventory	
Reserve Classification:	Local Purpose Esplanade and Foreshore Reserves	Cycle way Signage Boardwalk	
ID	Part of 19, 27		
Area	4.2591 And 1.4280 (Fee Simple)		
District Plan Zone	Rural and Residential		
Current State	Harbour esplanade reserve		
Previous RMP	Katikati Ward RMP August 2008		
Concept Plan	No		
Overview	Develop walkway/cycleway from Gilfillan Drive Reserve through to Prospect Drive		
Grass Mowing Standard	(0.1144 Ha) Type D – Does not exceed 90 mm grass height. Mowed to within 45 mm of ground		

Background:

- Refer to the “Katikati Foreshore Reserves”
- Extends east from Wills Road to the end of Prospect Drive.
- Passes in front of the wastewater treatment facility.

Reserve Issues:

- Walkway/cycleway formation is a long-term objective.
- Encroachment.

Reserve Management Policy:

- 6.94.1 Fence or clearly define the esplanade where residential development occurs adjacent.
- 6.94.2 Ensure encroachment onto the esplanade does not occur.
- 6.94.3 Provide appropriate signage adjacent to roadways to improve awareness of walkway/cycleway.
- 6.94.4 In the long-term, consider the formation of pedestrian access along this section of esplanade reserve.
- 6.94.5 Generic objectives for Local Purpose Reserve and generic policies apply.

Actions	Nil
---------	-----

