



# **Speed Limits Bylaw 2020**

## **Explanatory Note**

This bylaw made pursuant to section 22AB(1)(d) of the Land Transport Act 1998 and allows Western Bay of Plenty District Council as the road controlling authority to set speed limits on roads under the care, control or management of Western Bay of Plenty District Council.

This bylaw amends and replaces the Western Bay of Plenty District Council Speed Limits Bylaw 2012.

This explanatory note is for information purposes only and does not form part of this bylaw.



**Western Bay of Plenty District Council**

**Speed Limits Bylaw 2020**

**Contents**

1. Title.....	3
2. Commencement .....	3
3. Application .....	3
4. Purpose .....	3
5. Interpretation .....	3
6. Speed limits set by this bylaw.....	4
7. Signage .....	4
8. Offences .....	4
9. Enforcement .....	4
10. Schedules.....	5



## 1. Title

This Bylaw is the Western Bay of Plenty District Council Speed Limits Bylaw 2020.

## 2. Commencement

This bylaw comes into force on 29 March 2021.

## 3. Application

Western Bay of Plenty District Council makes this bylaw to set speed limits on roads under the care, control or management of this Council, as specified in the schedules to this bylaw.

***Explanatory note: This bylaw does not apply to state highways under the control of the New Zealand Transport Agency.***

## 4. Purpose

The purpose of this bylaw is to allow Western Bay of Plenty District Council to set speed limits in accordance with the Land Transport Rule: Setting of Speed Limits 2017 on all roads under the care, control or management of Western Bay of Plenty District Council. Consideration is also given to the Speed Management Guide as part of Council's assessment of appropriate speed limits.

## 5. Interpretation

5.1 In this bylaw, unless the context otherwise requires:

**Council** means the Western Bay of Plenty District Council

**Urban traffic area** refers to the areas specified in Schedule 1.

**Rule** means the Land Transport Rule: Setting of Speed Limits 2017.

5.2 Any undefined words, phrases or expressions used in this bylaw have the same meaning as the Rule.



## **6. Speed limits set by this bylaw**

- 6.1** The areas of road described in the Schedules 1-8 or as shown in a map referenced in those schedules, are declared to have the speed limit specified in those schedules and maps, which are part of the bylaw.
- 6.2** The speed limits set in Schedules 1-8 were determined in accordance with the Rule.
- 6.3** For the avoidance of doubt, unless a different speed limit is set and in effect under Schedule 2-8, or an emergency speed limit or temporary speed limit is in force, the speed limits on roads within the Western Bay of Plenty District are:
- (a) 50 km/h within the urban traffic areas specified in Schedule 1; and
  - (b) 100 km/h outside the urban traffic areas specified in Schedule 1.

## **7. Signage**

- 7.1.** Where a speed limit is set or varied by Council, it must install speed limit signage as required by the Rule.

## **8. Offences**

- 8.1** Every person commits an offence against this Bylaw who operates a vehicle in contravention of any speed limit set under this Bylaw.
- 8.2** Subject to anything to the contrary, every person who commits an offence against this Bylaw shall be subject to the penalties set out in the Land Transport Act 1998 and any relevant regulations.

## **9. Enforcement**

- 9.1** The New Zealand Police are responsible for the enforcement of the speed limits set out in this Bylaw.

## **10. Schedules**

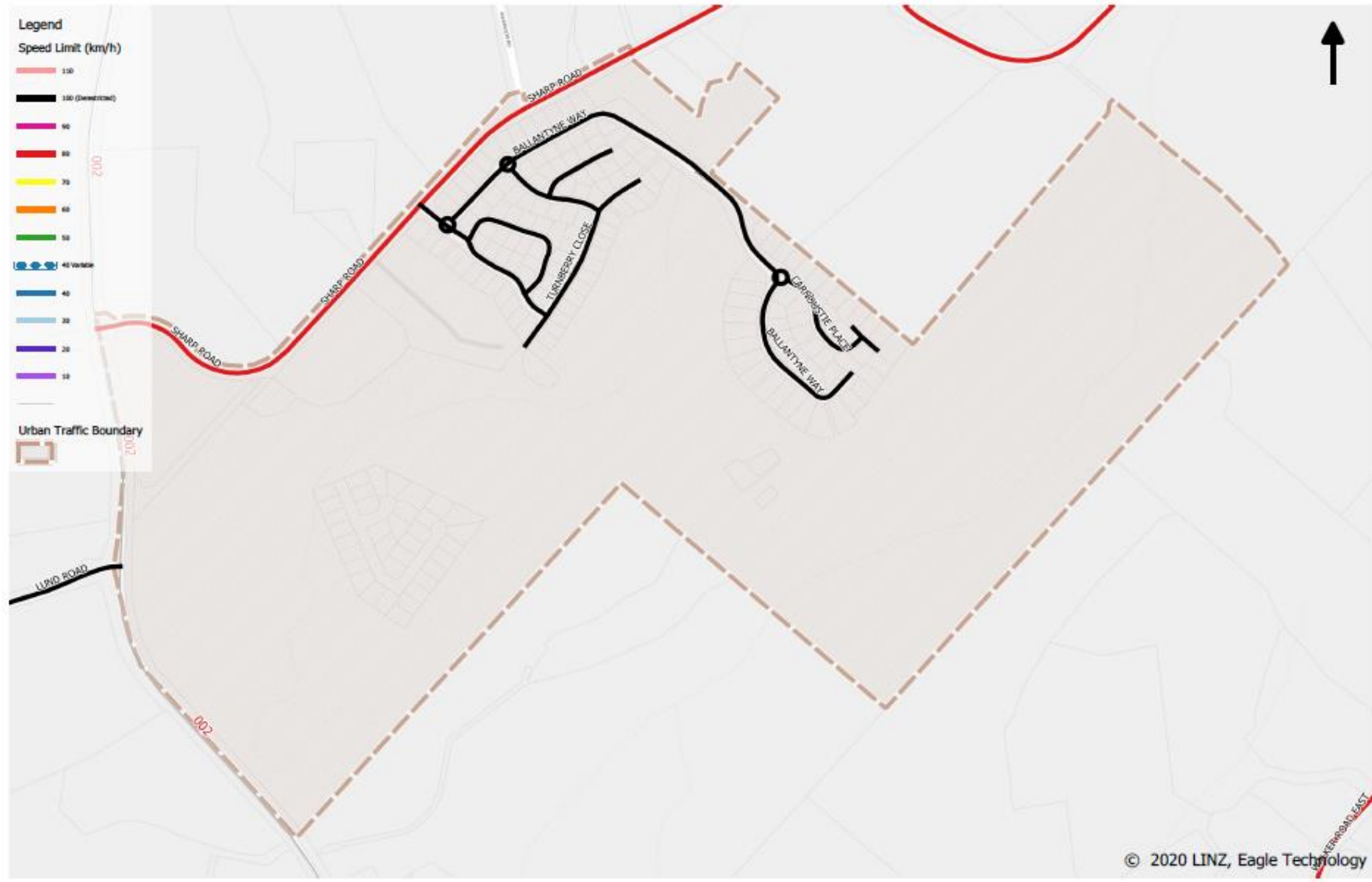
Unless a different speed limit is set and in effect under Schedule 2-8, or an emergency speed limit or temporary speed limit is in force, the speed limits on roads within the Western Bay of Plenty District are:

- (a) 50 km/h within the urban traffic areas specified in Schedule 1; and
- (b) 100 km/h outside the urban traffic areas specified in Schedule 1.

### **Schedule 1 – Urban traffic areas**

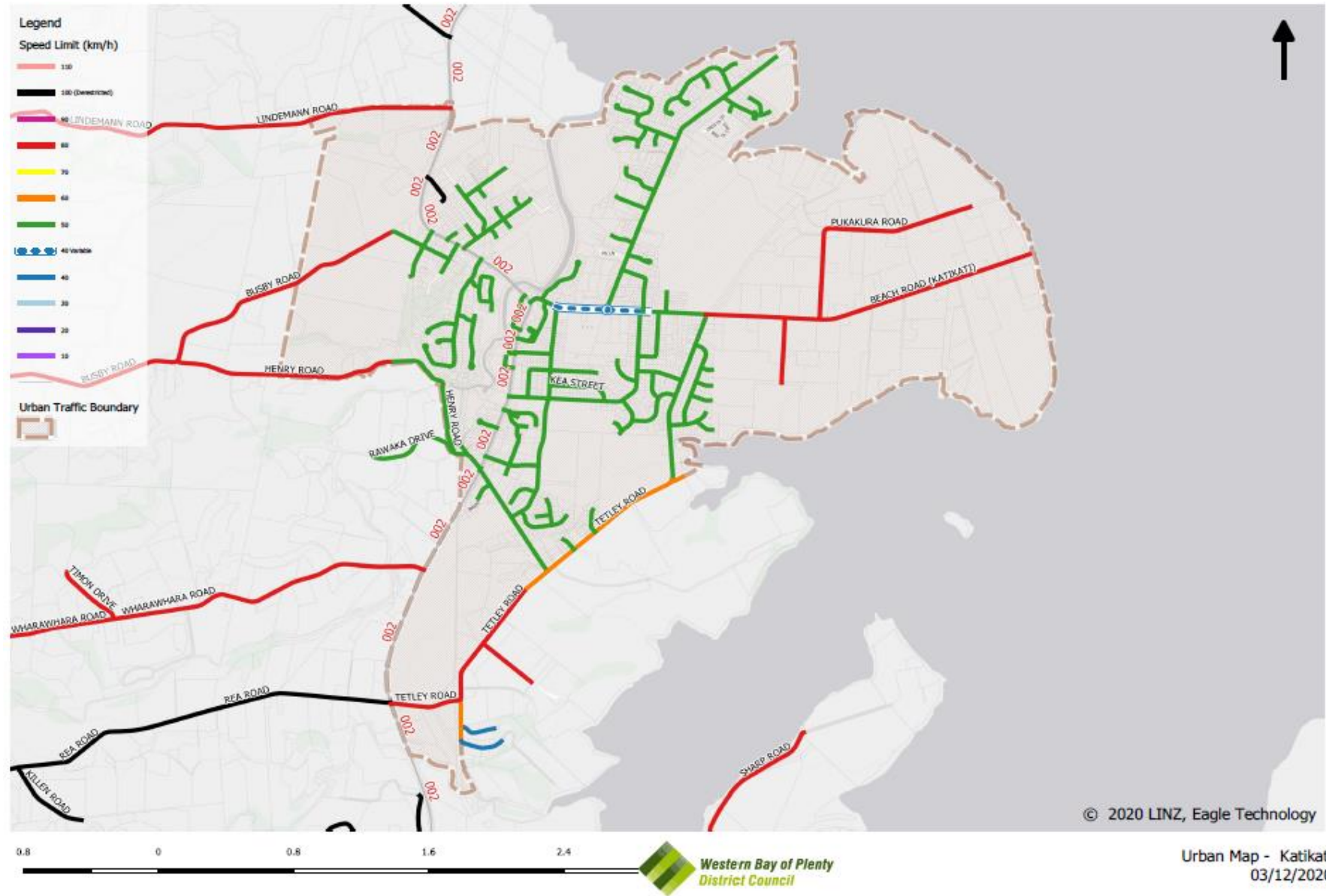


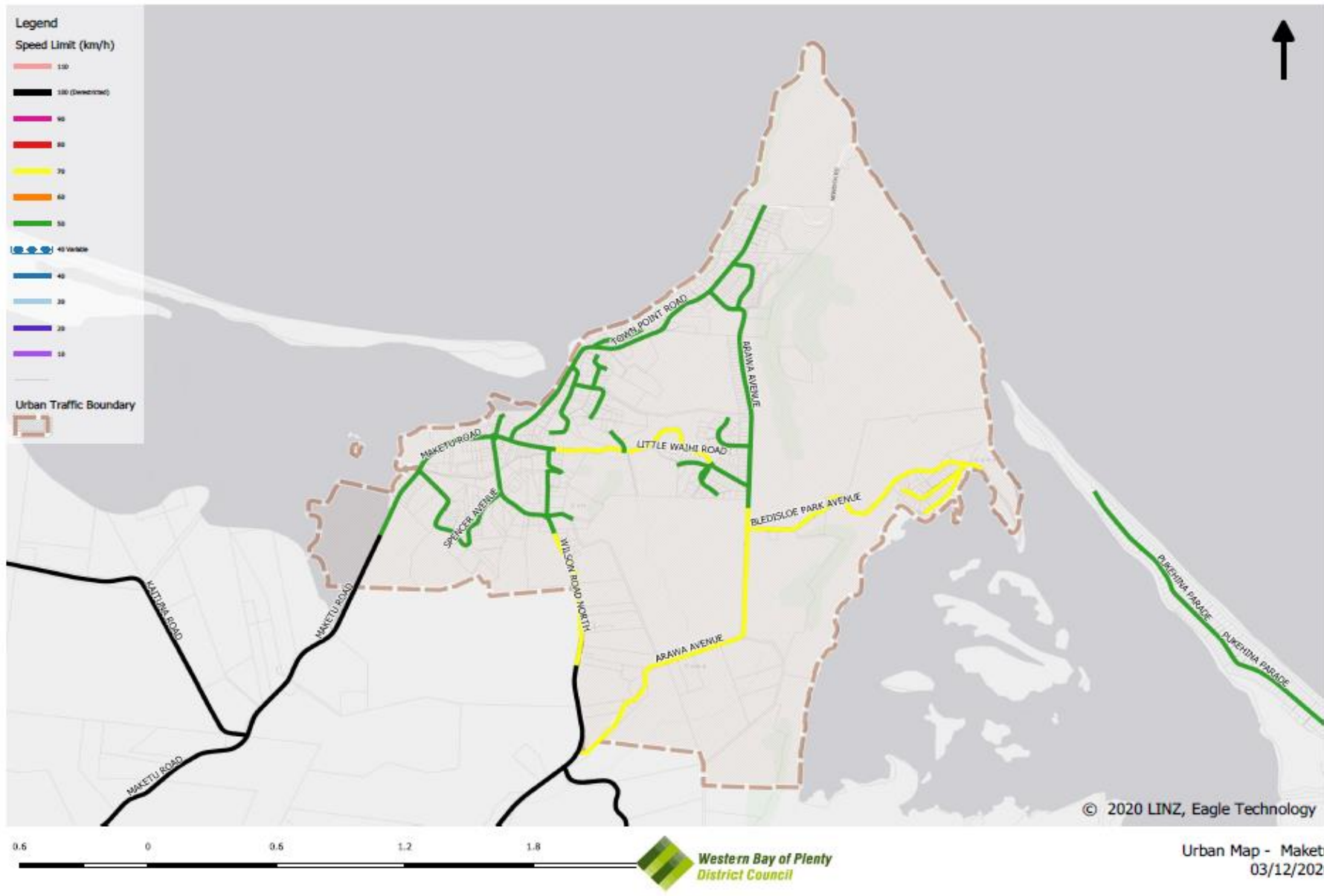


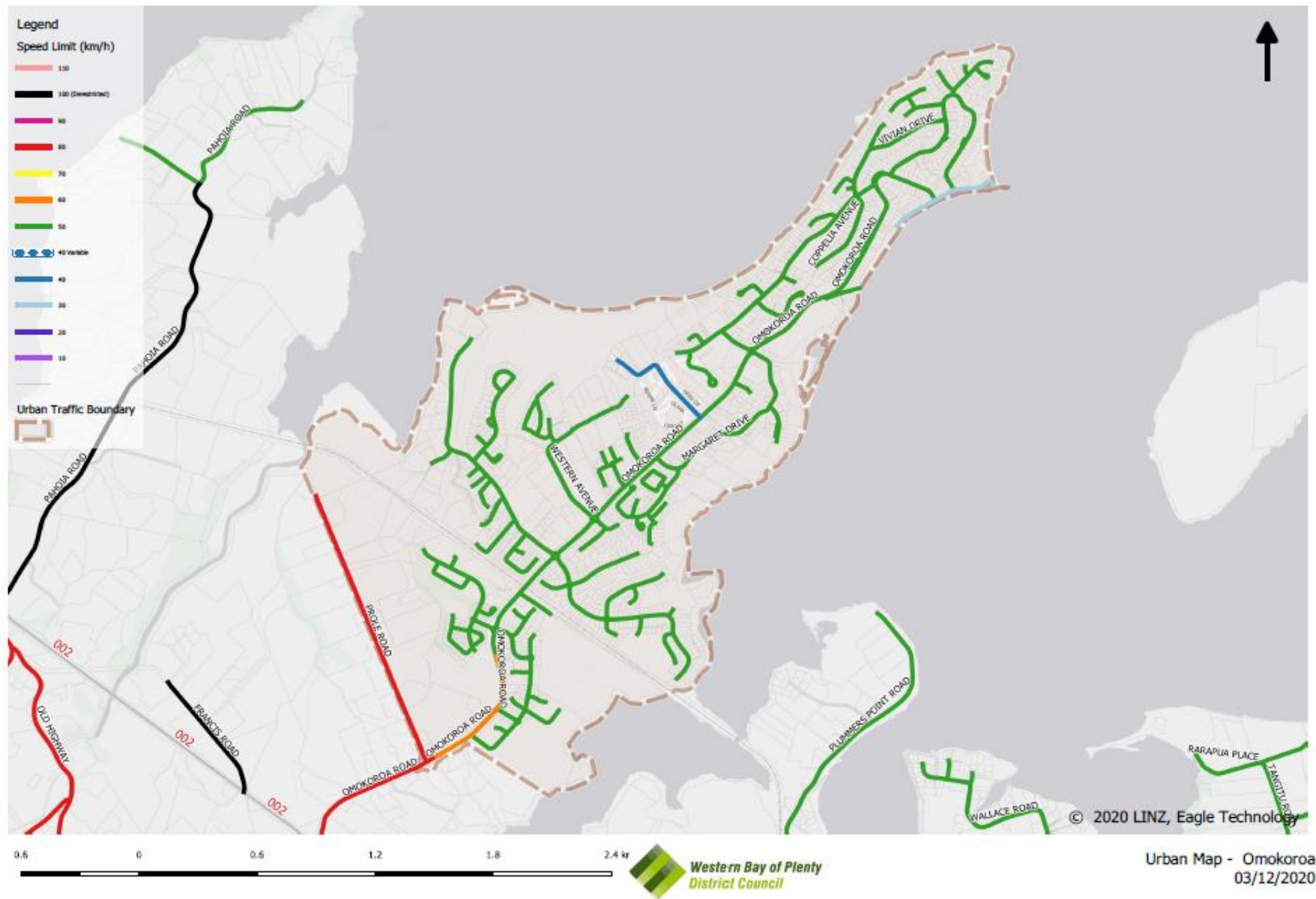


Urban Map - Fairview  
08/12/2020

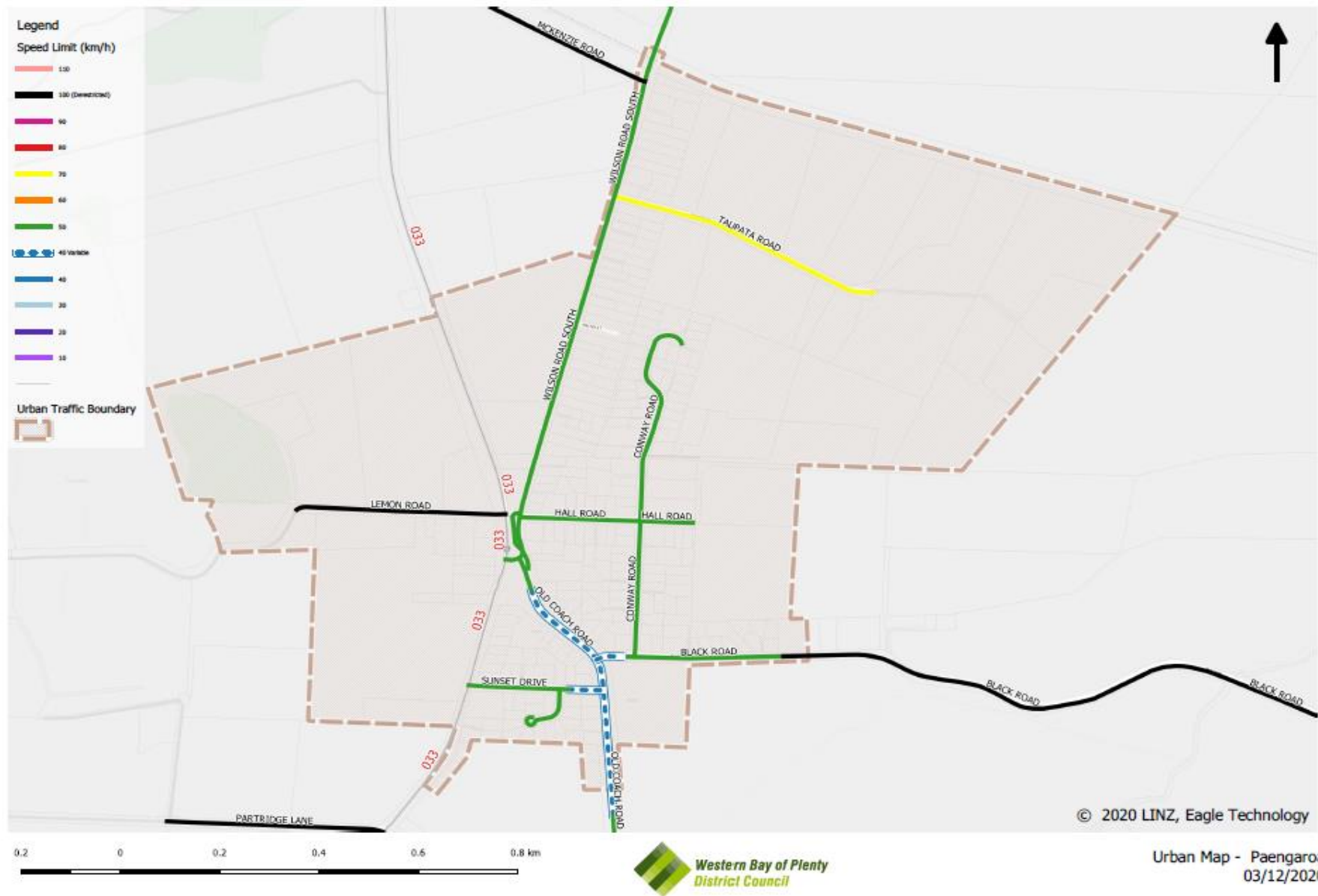


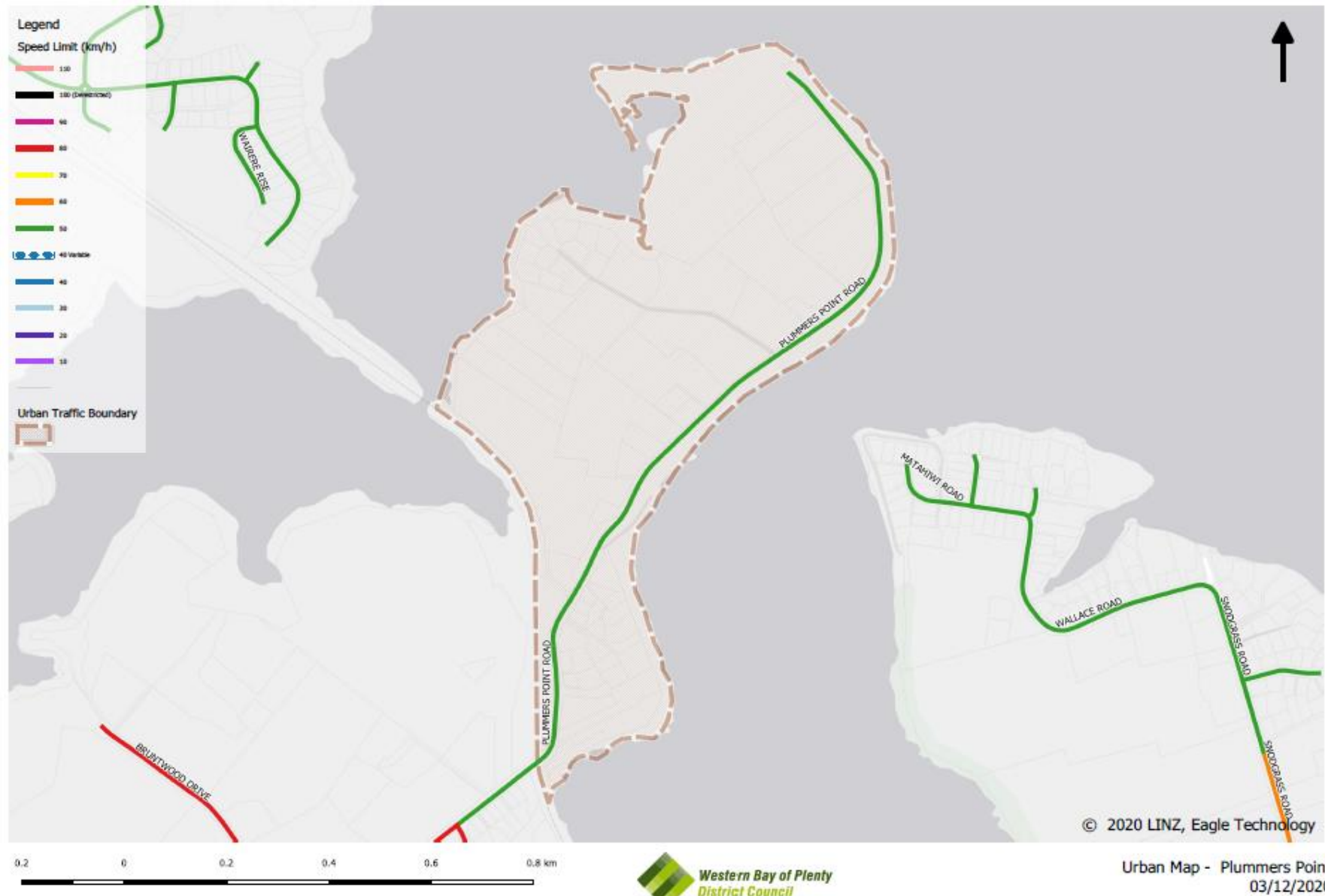




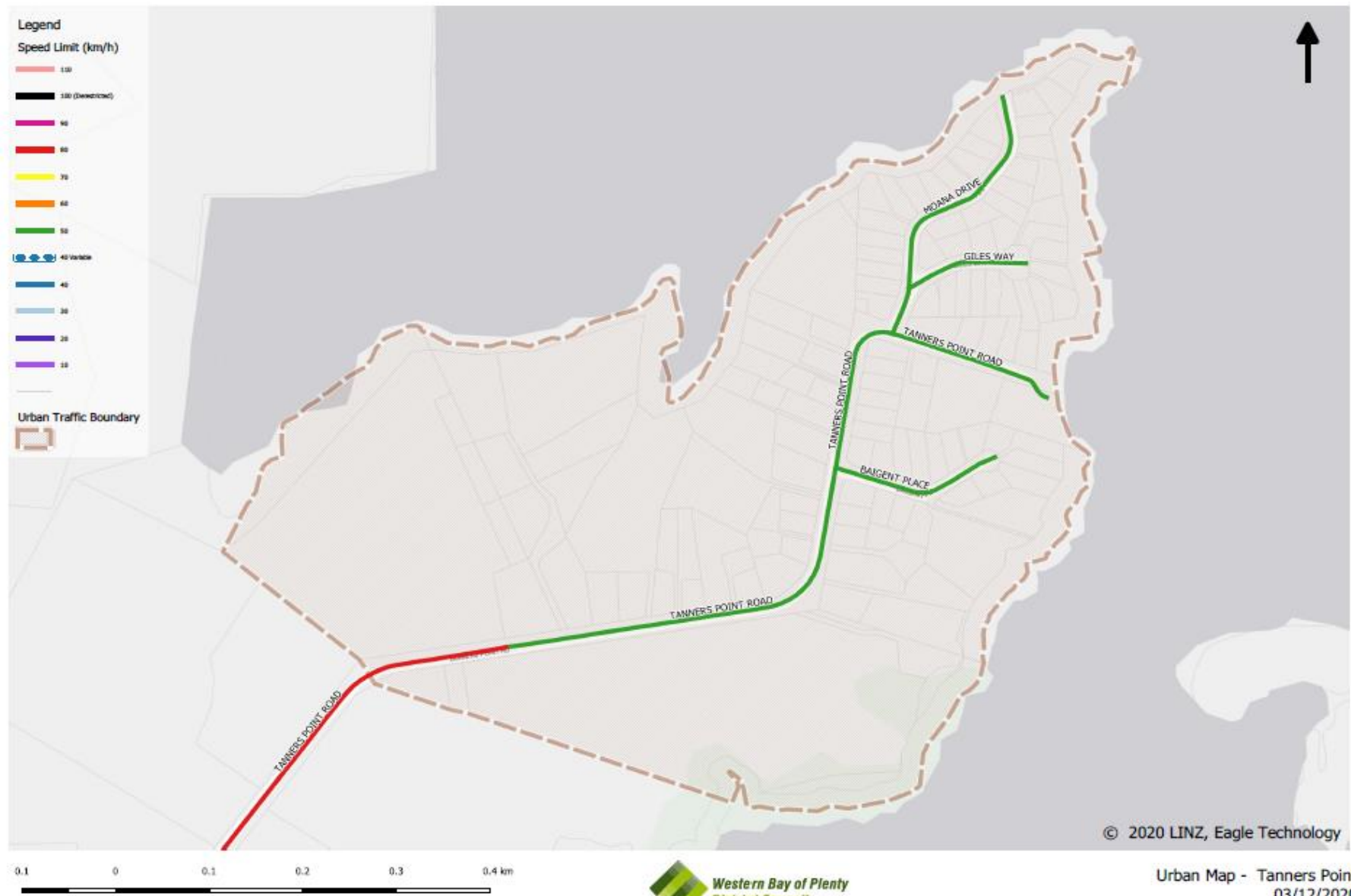




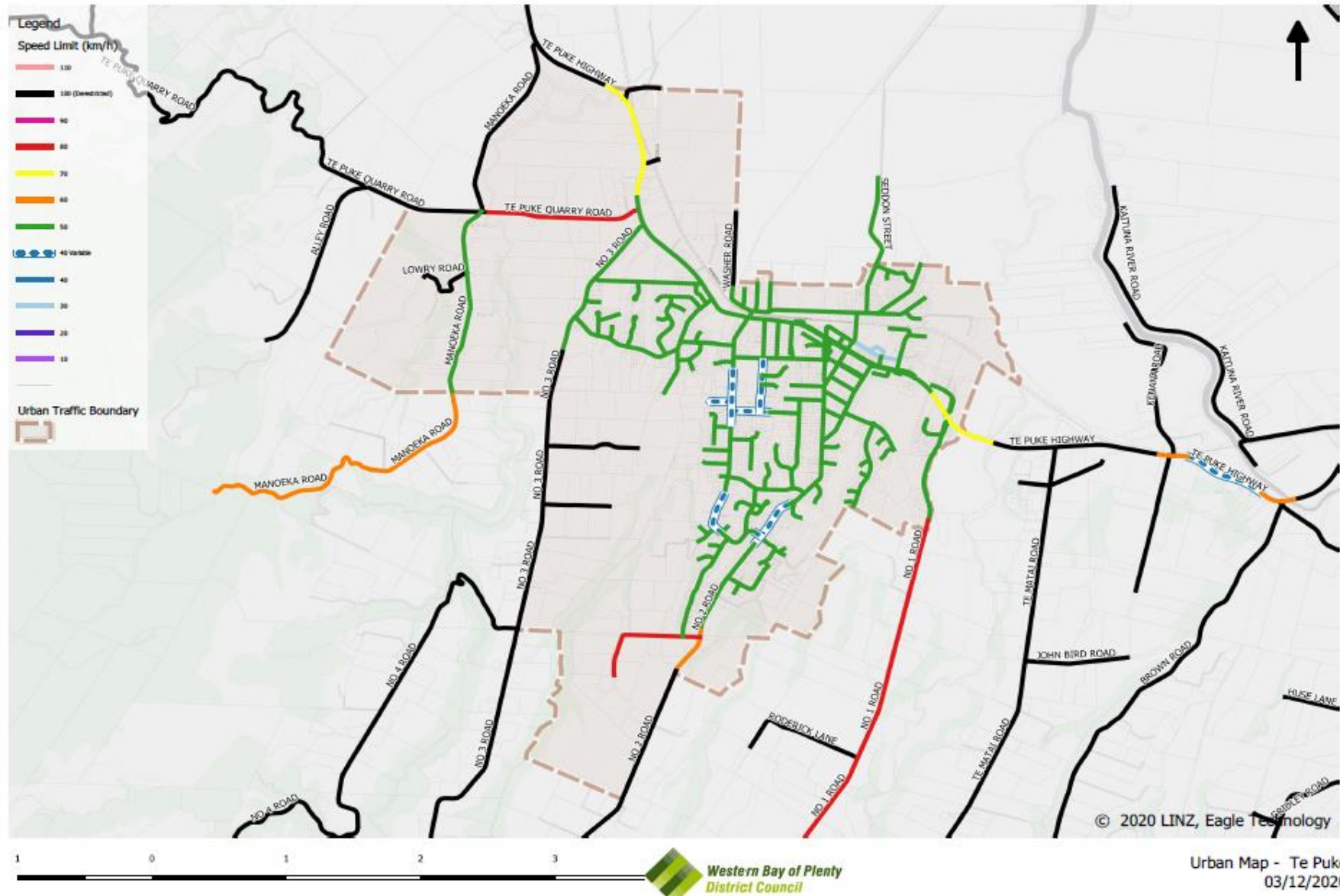
















## Schedule 2: Roads with a speed limit of 30 km/h

The roads or areas described in this schedule are declared to have a speed limit of 30 km/h. Unless otherwise stated, the restriction is for the length of the road, start to end.

Speed Limit (km/hr)	Description	Date Speed Limit Comes into Force	Legal Instrument	Previous Legal Instrument
30	Commerce Lane – From Jocelyn Street to King Street.	9 November 2012	Western Bay of Plenty District Council Speed Limits Bylaw 2012.	New Speed Limit; Western Bay of Plenty District Council Speed Limits Bylaw 2005, and 52(1) of the Transport Act 1962; Schedule as Amended August 2007.
30	McLaren Falls Road – from 900m south of SH29, including the northern parking area, to 1,500m south of SH29, including the McLaren Falls entrance	1 August 2013	Western Bay of Plenty District Council Speed Limits Bylaw 2012: Schedule as Amended 2013	WBOPDC Speed Restriction Bylaw 1997; Western Bay of Plenty District Council Speed Limits Bylaw 2005.
30	The Esplanade	29 March 2021	Western Bay of Plenty District Council Speed Limits Bylaw 2020	N/A

### Schedule 3: Roads with a speed limit of 40 km/h

The roads or areas described in this schedule are declared to have a speed limit of 40 km/h. Unless otherwise stated, the restriction is for the length of the road, start to end.

Speed Limit (km/hr)	Description	Date Speed Limit Comes into Force	Legal Instrument	Previous Legal Instrument
40	Rereatukahia Pa Road – From Rereatukahia Road to end of maintained section.	29 March 2021	Western Bay of Plenty District Council Speed Limits Bylaw 2020	N/A
40	Wilson Road, Waihi Beach – Urban Shopping Area between The Crescent and Dillon Street.	29 March 2021	Western Bay of Plenty District Council Speed Limits Bylaw 2020	N/A
40	Anderley Avenue	29 March 2021	Western Bay of Plenty District Council Speed Limits Bylaw 2020	N/A
40	Arawa Road	29 March 2021	Western Bay of Plenty District Council Speed Limits Bylaw 2020	N/A
40	Penelope Place	29 March 2021	Western Bay of Plenty District Council Speed Limits Bylaw 2020	N/A

## Schedule 4: Roads with a speed limit of 50km/h

The roads or areas described in this schedule are declared to have a speed limit of 50 km/h. Unless otherwise stated, the restriction is for the length of the road, start to end.

Speed Limit (km/hr)	Description	Date Speed Limit Comes into Force	Legal Instrument	Previous Legal Instrument
50	Borell Road – From Te Puna Road to Paparoa Road including the bend on Borell Road is designated an Urban Traffic Area.	9 November 2012	Western Bay of Plenty District Council Speed Limits Bylaw 2012.	WBOPDC Special Order 08/12/1999: Schedule as Amended August 2007.
50	Kuka Road.	9 November 2012	Western Bay of Plenty District Council Speed Limits Bylaw 2012.	WBOPDC Speed Restriction Bylaw 1997; Western Bay of Plenty District Council Speed Limits Bylaw 2005.
50	Minden Road - From State Highway Two to 80m north of Perkins Drive.	1 August 2013	Western Bay of Plenty District Council Speed Limits Bylaw 2012: Schedule as Amended 2013	Amendment to Speed Restriction Bylaw 1997; WBOPDC Special Order 31/08/2001; Western Bay of Plenty District Council Speed Limits Bylaw 2005.
50	Oropi Road – from 310m north of Oropi Gorge Road to 290m south of Gamman Mill Road.	1 August 2013	Western Bay of Plenty District Council Speed Limits Bylaw 2012: Schedule as Amended 2013	Western Bay of Plenty District Council Speed Limits Bylaw 2005; Schedule as Amended December 2008.
50	Pitua Road.	9 November 2012	Western Bay of Plenty District Council Speed Limits Bylaw 2012	WBOPDC Speed Restriction Bylaw 1997; Western Bay of Plenty District Council Speed Limits Bylaw 2005.
50	Rarapua Road.	9 November 2012	Western Bay of Plenty District Council Speed Limits Bylaw 2012.	New Speed Limit.
50	Rogers Road – From a point 80 metres south of the Stop control at the beach to the end of the road.	1 May 2015	Western Bay of Plenty District Council Speed Limits Bylaw 2012: Schedule as amended 2015	Western Bay of Plenty District Council Speed Limits Bylaw 2005.
50	Tangitu Road – From the intersection of Waikaraka Road to the end of Tangitu Road.	9 November 2012	Western Bay of Plenty District Council Speed Limits Bylaw 2012.	WBOPDC Speed Restriction Bylaw 1997; Western Bay of Plenty District Council Speed Limits Bylaw 2005.
50	TECT All Terrain Park – Public use road sections.	9 November 2012	Western Bay of Plenty District Council Speed Limits Bylaw 2012.	Previous Legal Instrument.

50	Te Puna Road – From a point 100 metres south of Borell Road to a point 50 metres north of James Road.	9 November 2012	Western Bay of Plenty District Council Speed Limits Bylaw 2012.	Notice in the New Zealand Gazette, 12/06/1997, No. 60, page 1392; Western Bay of Plenty District Council Speed Limits Bylaw 2005.
50	Waikaraka Road.	9 November 2012	Western Bay of Plenty District Council Speed Limits Bylaw 2012.	Notice in New Zealand Gazette, 12/06/1997, No 60, page 1392; Western Bay of Plenty District Council Speed Limits Bylaw 2005.
50	Waipa Road.	9 November 2012	Western Bay of Plenty District Council Speed Limits Bylaw 2012.	WBOPDC Speed Restriction Bylaw 1997; Western Bay of Plenty District Council Speed Limits Bylaw 2005.
50	Whataroa Road – From State Highway 36 to 2.2 kilometres from State Highway 36.	9 November 2012	Western Bay of Plenty District Council Speed Limits Bylaw 2012.	Previous Legal Instrument
50	Seaforth Road – From RP 4950m to Pio Road Roundabout	29 March 2021	Western Bay of Plenty District Council Speed Limits Bylaw 2020	N/A
50	Gamman Mill Road – From Oropi Road to end of Gamman Mill Road.	29 March 2021	Western Bay of Plenty District Council Speed Limits Bylaw 2020	N/A
50	Oropi Road – From Oropi Village south to 25m south of address No. 1381 (180m north of McPhail Road).	29 March 2021	Western Bay of Plenty District Council Speed Limits Bylaw 2020	N/A
50	No.2 Road – End of 50km/h to Dudley Vercoe Drive.	29 March 2021	Western Bay of Plenty District Council Speed Limits Bylaw 2020	N/A
50	No.1 Road – From address No. 27 to end of curved section between address No. 78 and No 93.	29 March 2021	Western Bay of Plenty District Council Speed Limits Bylaw 2020	N/A
50	No.3 Road – From Jellicoe Street RAB to south of MacLoughlin Drive at address No. 106	29 March 2021	Western Bay of Plenty District Council Speed Limits Bylaw 2020	N/A
50	Wilson Road South – From the end of the existing 50km/h to 135m north of address No. 156 (just before the corner).	29 March 2021	Western Bay of Plenty District Council Speed Limits Bylaw 2020	N/A
50	Athenree Road - 325m west of the Koutunui Road intersection to the Koutunui Road/Athenree Road Intersection.	29 March 2021	Western Bay of Plenty District Council Speed Limits Bylaw 2020	N/A

50	Manoeka Road – From Te Puke Quarry Road to address No. 293.	29 March 2021	Western Bay of Plenty District Council Speed Limits Bylaw 2020	N/A
50	Joyce Road – From Pyes Pa Road to Harlow Place	29 March 2021	Western Bay of Plenty District Council Speed Limits Bylaw 2020	N/A
50	Omokoroa Road – From near Kaimai Views roundabout to start of The Esplanade.	29 March 2021	Western Bay of Plenty District Council Speed Limits Bylaw 2020	N/A
50	Pahoia Road – From near the intersection with Pahoia Beach Road to the end of Pahoia Road to the east.	29 March 2021	Western Bay of Plenty District Council Speed Limits Bylaw 2020	N/A
50	Pahoia Beach Road	29 March 2021	Western Bay of Plenty District Council Speed Limits Bylaw 2020	N/A



## Schedule 5: Roads with a speed limit of 60 km/h

The roads or areas described in this schedule are declared to have a speed limit of 60 km/h. Unless otherwise stated, the restriction is for the length of the road, start to end.

Speed Limit (km/hr)	Description	Date Speed Limit Comes into Force	Legal Instrument	Previous Legal Instrument
60	Te Puke Highway – From 100m West of Strange Rd to 100M east of Kaituna River Bridge	1 June 2017	Western Bay of Plenty District Council Speed Limits Bylaw 2012: Schedule as Amended 2013	N/A
60	Welcome Bay Road – Between Asher Road and the eastern boundary of the Te Kura Kaupapa school, 600m west of Kairua Road.	9 November 2012	Western Bay of Plenty District Council Speed Limits Bylaw 2012.	New Speed Limit; Schedule as Amended August 2007.
60	Whakamarama Road - From 300m south of Ross Road to 850m south of Ross Road.	1 August 2013	Western Bay of Plenty District Council Speed Limits Bylaw 2012: Schedule as Amended 2013	Western Bay of Plenty District Council Speed Limits Bylaw 2005; Schedule as Amended December 2011.
60	Rereatukahia Road – From Tetley Road to end of maintained section	29 March 2021	Western Bay of Plenty District Council Speed Limits Bylaw 2020	N/A
60	Oropi Gorge Road – 150m West of water tank accessway to Oropi Road	29 March 2021	Western Bay of Plenty District Council Speed Limits Bylaw 2020	N/A
60	Oikimoke Road	29 March 2021	Western Bay of Plenty District Council Speed Limits Bylaw 2020	N/A
60	Lochhead Road	29 March 2021	Western Bay of Plenty District Council Speed Limits Bylaw 2020	N/A
60	Snodgrass Road – 50m south of Borell Road to 1200m north of Borell Road (existing 50km/h area).	29 March 2021	Western Bay of Plenty District Council Speed Limits Bylaw 2020	N/A
60	Newnham Road	29 March 2021	Western Bay of Plenty District Council Speed Limits Bylaw 2020	N/A
60	l'Anson Road	29 March 2021	Western Bay of Plenty District Council Speed Limits Bylaw 2020	N/A
60	Munro Road – SH2 to Te Puna Quarry Road	29 March 2021	Western Bay of Plenty District Council Speed Limits Bylaw 2020	N/A

60	Florence Lane	29 March 2021	Western Bay of Plenty District Council Speed Limits Bylaw 2020	N/A
60	Minden Road – From existing 80km/hr sign near Perkins Road to existing deregulation sign near Minden lookout.	29 March 2021	Western Bay of Plenty District Council Speed Limits Bylaw 2020	N/A
60	Te Puna Station Road – SH2 to 40m west of Clarke Road	29 March 2021	Western Bay of Plenty District Council Speed Limits Bylaw 2020	N/A
60	Opureora Road – From the wharf to 55 Opureora Road	29 March 2021	Western Bay of Plenty District Council Speed Limits Bylaw 2020	N/A
60	Manoeka Road – From address No. 293 to end of the road.	29 March 2021	Western Bay of Plenty District Council Speed Limits Bylaw 2020	N/A
60	No.2 Road – From Dudley Vercoe Drive to existing 100km/h (edge of urban limits)	29 March 2021	Western Bay of Plenty District Council Speed Limits Bylaw 2020	N/A
60	Tetley Road – from RP 1240m (No. 98) to Wills Road	29 March 2021	Western Bay of Plenty District Council Speed Limits Bylaw 2020	N/A
60	Ford Road – from 750m north of Kaituna Road to end of the road	29 March 2021	Western Bay of Plenty District Council Speed Limits Bylaw 2020	N/A
60	Crawford Road –up to address RP 4190m near Poripori Road.	29 March 2021	Western Bay of Plenty District Council Speed Limits Bylaw 2020	N/A
60	Junction Road	29 March 2021	Western Bay of Plenty District Council Speed Limits Bylaw 2020	N/A
60	Omokoroa Road – From Prole Road to near Kaimai Views roundabout.	29 March 2021	Western Bay of Plenty District Council Speed Limits Bylaw 2020	N/A

## Schedule 6: Roads with a speed limit of 70 km/h

The roads or areas described in this schedule are declared to have a speed limit of 70 km/h. Unless otherwise stated, the restriction is for the length of the road, start to end.

Speed Limit (km/hr)	Description	Date Speed Limit Comes into Force	Legal Instrument	Previous Legal Instrument
70	Arawa Avenue – From the intersection with Wilson Road to the existing 100/50 km/hr change point and Bledisloe Park Road.	9 November 2012	Draft Western Bay of Plenty District Council Speed Limits Bylaw 2012.	Previous Legal Instrument
70	Koutunui Road.	9 November 2012	Draft Western Bay of Plenty District Council Speed Limits Bylaw 2012.	Western Bay of Plenty District Council Speed Limits Bylaw 2005.
70	Manoeka Road – From Te Puke Highway to Te Puke Quarry Road	9 November 2012	Draft Western Bay of Plenty District Council Speed Limits Bylaw 2012.	Notice in the New Zealand Gazette, 18/09/1975, No. 78, page 2090; Western Bay of Plenty District Council Speed Limits Bylaw 2005.
70	Park Lane.	9 November 2012	Draft Western Bay of Plenty District Council Speed Limits Bylaw 2012.	Notice in New Zealand Gazette, 12/06/1997, No 60, page 1392; Western Bay of Plenty District Council Speed Limits Bylaw 2005.
70	Tangitu Road – From the intersection of Te Puna Road to the intersection of Waikaraka Road.	9 November 2012	Draft Western Bay of Plenty District Council Speed Limits Bylaw 2012.	WBOPDC Speed Restriction Bylaw 1997; Western Bay of Plenty District Council Speed Limits Bylaw 2005.
70	Taupata Street.	9 November 2012	Draft Western Bay of Plenty District Council Speed Limits Bylaw 2012.	Notice in New Zealand Gazette, 10/01/2003, No 78, page 2073; Western Bay of Plenty District Council Speed Limits Bylaw 2005.
70	Te Puna Road – From 50 metres north of James Road to Tangitu Road.	9 November 2012	Draft Western Bay of Plenty District Council Speed Limits Bylaw 2012.	WBOPDC Special Order 31/08/2001: Amendment to Speed Restriction Bylaw 1997; Western Bay of Plenty District Council Speed Limits Bylaw 2005.
70	Waikaraka Drive West.	9 November 2012	Draft Western Bay of Plenty District Council Speed Limits Bylaw 2012.	Notice in New Zealand Gazette, 12/06/1997, No 60, page 1392; Western Bay of Plenty District Council Speed Limits Bylaw 2005.

70	Wilson Road North - From a point 100 metres measured southerly from School Road to a point 750 metres measured southerly from School Road.	9 November 2012	Draft Western Bay of Plenty District Council Speed Limits Bylaw 2012.	Notice in the New Zealand Gazette, 09/05/1991, No. 69, pg 1534; Western Bay of Plenty District Council Speed Limits Bylaw 2005.
70	Wilson Road South – From McKenzie Road to 400m north of McKenzie Road	9 November 2012	Draft Western Bay of Plenty District Council Speed Limits Bylaw 2012.	Notice in the New Zealand Gazette, 10/07/2003, No. 78, pg 2073; Western Bay of Plenty District Council Speed Limits Bylaw 2005.

## Schedule 7: Roads with a speed limit of 80 km/h

The roads or areas described in this schedule are declared to have a speed limit of 80 km/h. Unless otherwise stated, the restriction is for the length of the road, start to end.

Speed Limit (km/hr)	Description	Date Speed Limit Comes into Force	Legal Instrument	Previous Legal Instrument
80	Albert Lane.	9 November 2012	Western Bay of Plenty District Council Speed Limits Bylaw 2012.	WBOPDC Special Order 8/12/1999, Amendment to Speed Restriction Bylaw 1997; Western Bay of Plenty District Council Speed Limits Bylaw 2005.
80	Anderson Lane.	9 November 2012	Western Bay of Plenty District Council Speed Limits Bylaw 2012.	WBOPDC Special Order 8/12/1999, Amendment to Speed Restriction Bylaw 1997; Western Bay of Plenty District Council Speed Limits Bylaw 2005.
80	Armstrong Road.	9 November 2012	Western Bay of Plenty District Council Speed Limits Bylaw 2012.	Speed Restriction Bylaw 1997; Western Bay of Plenty District Council Speed Limits Bylaw 2005.
80	Athenree Road - From Steel Road to 100 metres west of Koutunui Road.	9 November 2012	Western Bay of Plenty District Council Speed Limits Bylaw 2012.	New speed limit
80	Barrett Rd – From State Highway 2 to Old Highway Road.	9 November 2012	Western Bay of Plenty District Council Speed Limits Bylaw 2012.	WBOPDC Special Order, 17/10/2002, Amendment to Speed Restriction Bylaw 1997; Western Bay of Plenty District Council Speed Limits Bylaw 2005.
80	Beach Rd – From the intersection of Wills Road to the end.	9 November 2012	Western Bay of Plenty District Council Speed Limits Bylaw 2012.	WBOPDC Special Order 08/12/1999, Amendment to Speed Restriction Bylaw 1997; Western Bay of Plenty District Council Speed Limits Bylaw 2005.
80	Borell Road – Except the section of Borell Road from Te Puna Road to Paparoa Road including the bend on Borell Road.	9 November 2012	Western Bay of Plenty District Council Speed Limits Bylaw 2012.	WBOPDC Special Order 08/12/1999, Amendment to Speed Restriction Bylaw 1997; Schedule as Amended

				August 2007.
80	Bruntwood Drive.	9 November 2012	Western Bay of Plenty District Council Speed Limits Bylaw 2012.	WBOPDC Special Order 08/11/1999, Amendment to Speed Restriction Bylaw 1997; Western Bay of Plenty District Council Speed Limits Bylaw 2005.
80	Busby Road – From a point 340m north of Hyde Street to the end of Busby Road.	1 May 2015	Western Bay of Plenty District Council Speed Limits Bylaw 2012: Schedule as amended 2015.	Western Bay of Plenty District Council Speed Limits Bylaw 2005.
80	Dudley Vercoe Drive – From No.2 Road to the end of Dudley Vercoe Drive.	9 November 2012	Western Bay of Plenty District Council Speed Limits Bylaw 2012.	Western Bay of Plenty District Council Speed Limits Bylaw 2005; Schedule as Amended 2008.
80	Elmwood Road.	9 November 2012	Western Bay of Plenty District Council Speed Limits Bylaw 2012.	WBOPDC Special Order, 31/08/2001, Amendment to Speed Restriction Bylaw 1997; Western Bay of Plenty District Council Speed Limits Bylaw 2005.
80	Emeny Road.	9 November 2012	Western Bay of Plenty District Council Speed Limits Bylaw 2012.	WBOPDC Special Order 08/11/1999, Amendment to Speed Restriction Bylaw 1997; Western Bay of Plenty District Council Speed Limits Bylaw 2005.
80	Esdaille Road - From State Highway 2 to 800 metres east of Lowe Road.	9 November 2012	Western Bay of Plenty District Council Speed Limits Bylaw 2012.	Western Bay of Plenty District Council Speed Limits Bylaw 2005; Schedule as Amended 2008.
80	Henry Road – From Katikati Urban Traffic Area boundary to Busby Road.	1 May 2015	Western Bay of Plenty District Council Speed Limits Bylaw 2012: Schedule as amended 2015.	Western Bay of Plenty District Council Speed Limits Bylaw 2005.
80	James Road.	9 November 2012	Western Bay of Plenty District Council Speed Limits Bylaw 2012.	WBOPDC Speed Restriction Bylaw 1997; Western Bay of Plenty District Council Speed Limits Bylaw 2005.
80	Jess Road.	9 November 2012	Western Bay of Plenty District Council Speed Limits Bylaw 2012.	WBOPDC Speed Restriction Bylaw 1997; Western Bay of Plenty District Council Speed Limits Bylaw 2005.
80	Loop Road.	9 November 2012	Western Bay of Plenty District Council Speed Limits Bylaw 2012.	WBOPDC Speed Restriction Bylaw 1997; Western Bay of Plenty District

				Council Speed Limits Bylaw 2005.
80	Minden Road – From 3250m along Minden Road (Look Out Point) for the remainder of Minden Road.	1 August 2013	Western Bay of Plenty District Council Speed Limits Bylaw 2012: Schedule as Amended 2013	Amendment to Speed Restriction Bylaw 1997; WBOPDC Special Order 31/08/2001; Western Bay of Plenty District Council Speed Limits Bylaw 2005.
80	Neewood Road.	9 November 2012	Western Bay of Plenty District Council Speed Limits Bylaw 2012.	WBOPDC Special Order 31/08/2001, Amendment to Speed Restriction Bylaw 1997; Western Bay of Plenty District Council Speed Limits Bylaw 2005.
80	No 1 Road – From a point 950 metres south of Te Puke Highway to 80m south of Cheetham Avenue	1 May 2015	Western Bay of Plenty District Council Speed Limits Bylaw 2012: Schedule as amended 2015.	WBOPDC Special Order 17/10/2002, Amendment to Speed Restriction Bylaw 1997; Western Bay of Plenty District Council Speed Limits Bylaw 2005.
80	Ohauti Rd - From Tauranga District Council/Western Bay of Plenty District Council boundary to Rowe Road.	9 November 2012	Western Bay of Plenty District Council Speed Limits Bylaw 2012.	WBOPDC Special Order 31/08/2001, Amendment to Speed Restriction Bylaw 1997; Western Bay of Plenty District Council Speed Limits Bylaw 2005.
80	Old Highway.	1 August 2013	Western Bay of Plenty District Council Speed Limits Bylaw 2012: Schedule as Amended 2015	WBOPDC Speed Restriction Bylaw 1997; Western Bay of Plenty District Council Speed Limits Bylaw 2005. Western Bay of Plenty District Council Speed Limits Bylaw 2012: Schedule as Amended 2013
80	Oliver Road.	9 November 2012	Western Bay of Plenty District Council Speed Limits Bylaw 2012.	WBOPDC Special Order 31/08/2001, Amendment to Speed Restriction Bylaw 1997; Western Bay of Plenty District Council Speed Limits Bylaw 2005.
80	Ōmokoroa Road - From State Highway 2 to Prole Road	29 March 2021	Western Bay of Plenty District Council Speed Limits Bylaw 2020	N/A

				2005.
80	Paparoa Road.	9 November 2012	Western Bay of Plenty District Council Speed Limits Bylaw 2012.	WBOPDC Speed Restriction Bylaw 1997; Western Bay of Plenty District Council Speed Limits Bylaw 2005.
80	Plummer Road	1 May 2015	Western Bay of Plenty District Council Speed Limits Bylaw 2012: Schedule as amended 2015.	Western Bay of Plenty District Council Speed Limits Bylaw 2005.
80	Plummers Point Road - From State Highway 2 to Jess Road.	9 November 2012	Western Bay of Plenty District Council Speed Limits Bylaw 2012.	WBOPDC Special Order 8/11/1999: Amendment to Speed Restriction Bylaw 1997; Western Bay of Plenty District Council Speed Limits Bylaw 2005.
80	Prole Road.	9 November 2012	Western Bay of Plenty District Council Speed Limits Bylaw 2012.	WBOPDC Special Order 2/03/2001: Amendment to Speed Restriction Bylaw 1997; Western Bay of Plenty District Council Speed Limits Bylaw 2005.
80	Prospect Drive.	9 November 2012	Western Bay of Plenty District Council Speed Limits Bylaw 2012.	WBOPDC Special Order 08/11/1999, Amendment to Speed Restriction Bylaw 1997; Western Bay of Plenty District Council Speed Limits Bylaw 2005.
80	Pukakura Road.	9 November 2012	Western Bay of Plenty District Council Speed Limits Bylaw 2012.	WBOPDC Special Order 08/11/1999, Amendment to Speed Restriction Bylaw 1997; Western Bay of Plenty District Council Speed Limits Bylaw 2005.
80	Snodgrass Road - From a point measured 40 metres generally southerly along Snodgrass Road from Borell Road to State Highway 2.	9 November 2012	Western Bay of Plenty District Council Speed Limits Bylaw 2012.	WBOPDC Speed Restriction Bylaw 1997; Western Bay of Plenty District Council Speed Limits Bylaw 2005.
80	Strathmore Drive.	9 November 2012	Western Bay of Plenty District Council Speed Limits Bylaw 2012.	WBOPDC Special Order 31/08/2001, Amendment to Speed Restriction Bylaw 1997; Western Bay of Plenty District Council Speed Limits Bylaw 2005.



80	Tanners Point Road - Commencing at State Highway 2 to the existing 50 km/h speed restriction.	9 November 2012	Western Bay of Plenty District Council Speed Limits Bylaw 2012.	New Speed Limit; Schedule as amended June 2011.
80	Te Puke Quarry Road – From State Highway 2 to Manoeka Road.	9 November 2012	Western Bay of Plenty District Council Speed Limits Bylaw 2012.	Western Bay of Plenty District Council Speed Limits Bylaw 2005; Schedule as Amended 2008.
80	Te Puna Road – From State Highway 2 to a point 100 metres south from Borell Road.	9 November 2012	Western Bay of Plenty District Council Speed Limits Bylaw 2012.	WBOPDC Special Order 31/08/2001: Amendment to Speed Restriction Bylaw 1997.
80	Tetley Road - From State Highway 2 to 98 Tetley Road	9 November 2012	Western Bay of Plenty District Council Speed Limits Bylaw 2012.	WBOPDC Special Order 17/10/2002: Amendment to Speed Restriction Bylaw 1997; Western Bay of Plenty District Council Speed Limits Bylaw 2005.
80	Tuapiro Road	1 August 2013	Western Bay of Plenty District Council Speed Limits Bylaw 2012: Schedule as Amended 2013	WBOPDC Speed Restriction Bylaw 1997; Western Bay of Plenty District Council Speed Limits Bylaw 2005.
80	Wairoa Road - From State Highway 2 to Crawford Road.	9 November 2012	Western Bay of Plenty District Council Speed Limits Bylaw 2012.	WBOPDC Special Order 31/08/2001: Amendment to Speed Restriction Bylaw 1997; Western Bay of Plenty District Council Speed Limits Bylaw 2005.
80	Walden Lane.	9 November 2012	Western Bay of Plenty District Council Speed Limits Bylaw 2012.	WBOPDC Special Order 31/08/2001: Amendment to Speed Restriction Bylaw 1997; Western Bay of Plenty District Council Speed Limits Bylaw 2005.
80	Walker Road East - From State Highway 2 to end.	9 November 2012	Western Bay of Plenty District Council Speed Limits Bylaw 2012.	WBOPDC Special Order 31/08/2001: Amendment to Speed Restriction Bylaw 1997; Western Bay of Plenty District Council Speed Limits Bylaw 2005.
80	Welcome Bay Road – From 260 metres east of Ranginui Road to Asher Road and from the eastern boundary of the Kura Kaupapa school, 600m west of Kairua Road to State Highway 2.	9 November 2012	Western Bay of Plenty District Council Speed Limits Bylaw 2012.	New speed limit; Schedule as Amended August 2007.
80	Whakamarama Road - Plus all associated no exit side roads (Martha Lane, Goodall Road, Leyland Road, Odey	1 August 2013	Western Bay of Plenty District Council Speed Limits Bylaw 2012: Schedule as	WBOPDC Speed Restriction Bylaw 1997; Western Bay of Plenty District

	Road, Te Kohanga Road, Te Tuhi Track Road, Ross Road, Laurel Drive, McQuade Road, Mickells Drive, Sinclair Road) – excluding section between 300m south of Ross Road 850m south of Ross Road. (Excluding 60km/hr area)		Amended 2013	Council Speed Limits Bylaw 2005.
80	Wharawhara Road – From State Highway 2 to Baker Road.	9 November 2012	Western Bay of Plenty District Council Speed Limits Bylaw 2012.	New speed limit; Schedule as Amended August 2007.
80	Woodland Road	1 August 2013	Western Bay of Plenty District Council Speed Limits Bylaw 2012: Schedule as Amended 2013	WBOPDC Special Order 17/08/2002: Amendment to Speed Restriction Bylaw 1997; Western Bay of Plenty District Council Speed Limits Bylaw 2005.
80	Youngson Road	1 May 2015	Western Bay of Plenty District Council Speed Limits Bylaw 2012. Schedule as amended 2015.	Western Bay of Plenty District Council Speed Limits Bylaw 2005.
80	Sharp Road	29 March 2021	Western Bay of Plenty District Council Speed Limits Bylaw 2020	N/A
80	Lindemann Road	29 March 2021	Western Bay of Plenty District Council Speed Limits Bylaw 2020	N/A
80	Waihi Beach Road – From District Boundary to existing 50km/h	29 March 2021	Western Bay of Plenty District Council Speed Limits Bylaw 2020	N/A
80	Joyce Road – From Harlow Place east for the remainder of the road to SH 36	29 March 2021	Western Bay of Plenty District Council Speed Limits Bylaw 2020	N/A
80	Oropi Road – From Wood Road to just south of Castles Road.	29 March 2021	Western Bay of Plenty District Council Speed Limits Bylaw 2020	N/A
80	Omanawa Road – From SH29 to McLarens Falls Road junction	29 March 2021	Western Bay of Plenty District Council Speed Limits Bylaw 2020	N/A
80	Clarke Road – From SH2 to Te Puna Station Road	29 March 2021	Western Bay of Plenty District Council Speed Limits Bylaw 2020	N/A
80	Te Puna Station Road – from 40m west of Clarke Road to Te Puna Road	29 March 2021	Western Bay of Plenty District Council Speed Limits Bylaw 2020	N/A
80	Poripori Road – From SH29 to Crawford Road	29 March 2021	Western Bay of Plenty District Council Speed Limits Bylaw 2020	N/A
80	Pah Road – From Te Puke Highway for 800m north	29 March 2021	Western Bay of Plenty District Council Speed Limits Bylaw 2020	N/A

## Schedule 8: Variable speed limits

### Variable Speed Limit around schools

The variable speed limit on the areas of road described below are set at 40 km/h for the times specified in the table below. The ordinary speed limit (set in schedules 1-7 of this bylaw) applies at all times when the variable speed limit signs near the school are not displaying the speed limit.

Speed Limit (km/hr)	Description	Date Speed Limit Comes into Force	Legal Instrument	Previous Legal Instrument
40	Cameron Road, Te Puke – from 54m west of Cameron/Boucher intersection to Boucher Ave. School Zone, Operating times are: 8:25am-9:00am and 2:50pm-3:10pm during school term	1 October 2016	Western Bay of Plenty District Council Speed Limits Bylaw 2012: Schedule as Amended 2013	Amendment to Speed Restriction Bylaw 1997; WBOPDC Special Order 31/08/2001; Western Bay of Plenty District Council Speed Limits Bylaw 2005.
40	Boucher Ave, Te Puke – from 40m south of Lenihan/Boucher intersection to 77m south of Cameron/Boucher intersection. School Zone, Operating times are: 8:25am-9:00am And 2:50pm-3:10pm during school term	1 October 2016	Western Bay of Plenty District Council Speed Limits Bylaw 2012: Schedule as Amended 2013	Amendment to Speed Restriction Bylaw 1997; WBOPDC Special Order 31/08/2001; Western Bay of Plenty District Council Speed Limits Bylaw 2005.
40	Cameron Road, Te Puke – from 73m south of Muir St/Cameron Road intersection to 30m north of the intersection of Princess St/Cameron Road intersection. School Zone, Operating times are: 8:05am-8:50am and 2:55pm-3:30pm during school term	1 October 2016	Western Bay of Plenty District Council Speed Limits Bylaw 2012: Schedule as Amended 2013	WBOPDC Speed Restriction Bylaw 1997; Western Bay of Plenty District Council Speed Limits Bylaw 2005.
40	Kowhai Ave - all School Zone, Operating times are: 8:05am-8:50am and 2:55pm-3:30pm during school term.	1 October 2016	Western Bay of Plenty District Council Speed Limits Bylaw 2012: Schedule as Amended 2013	Western Bay of Plenty District Council Speed Limits Bylaw 2005; Schedule as Amended December 2011.
40	Tui Street, Te Puke – from Cameron Road to 74m east of the Tui St/Beatty Ave intersection. School Zone, Operating times are: 8:05am-8:50am and 2:55pm-3:30pm during school term	9 November 2012	Western Bay of Plenty District Council Speed Limits Bylaw 2012: Schedule as Amended 2013	WBOPDC Speed Restriction Bylaw 1997; Western Bay of Plenty District Council Speed Limits Bylaw 2005.

40	Beatty Ave, Te Puke – from 26m south of the Queen Street/Beatty Ave intersection to Tui Street. School Zone, Operating times are: 8:05am-8:50am and 2:55pm-3:30pm during school term	9 November 2012	Western Bay of Plenty District Council Speed Limits Bylaw 2012: Schedule as Amended 2013	Notice in the New Zealand Gazette, 24/01/1991, No.11, pg 201; WBOPDC Special Order 08/11/1999, Amendment to Speed Restriction Bylaw 1997; Western Bay of Plenty District Council Speed Limits Bylaw 2005.
40	Te Puke Highway, Waitangi – from 110m east of Kenana Rd to 155m west of the intersection of Rangiuru Rd/Te Puke Highway. School Zone, Operating times are: 8:10am-8:45am and 2:50pm-3:10pm during school term	1 June 2017	Western Bay of Plenty District Council Speed Limits Bylaw 2012: Schedule as Amended 2013	N/A
40	Cameron Road, Te Puke – from 145m south of Hookey Drive intersection to 143 Cameron Road and Kylemore Place intersection.  School Zone Operating times are:  8:05am-8:50am and 2:55pm-3:30pm during school term	29 March 2021	Western Bay of Plenty District Council Speed Limits Bylaw 2020	N/A
40	Beach Road, Katikati – From 10m east of Carisbrooke Street to 50m West of Fairview Road  School Zone Operating times are:  8:20am - 8:55am and 2:50pm - 3:10pm during school term	29 March 2021	Western Bay of Plenty District Council Speed Limits Bylaw 2020	N/A

40	Beach Road, Waihi Beach – From 50m north of Wilson Road RAB to 50m south of Browns Drive  School Zone Operating Times are:  8:20am - 8:55am and 2:50pm - 3:10pm during school term	29 March 2021	Western Bay of Plenty District Council Speed Limits Bylaw 2020	N/A
40	Oropi Rd, Oropi Village – from 15 m east of Oropi Gorge Rd (RP 11.847) to 100 m south of Gamman Mill Rd (RP 12.206)  School Zone, Operating times are:  8:20am - 8:55am and 2:35pm - 2:55pm during school term	29 March 2021	Western Bay of Plenty District Council Speed Limits Bylaw 2020	N/A
40	Old Coach Rd, Paengaroa – from 70 m south of Wilson Rd South (RP 70) to 265 m south of Sunset Drive (RP 605)  School Zone, Operating times are:  8:20am - 8:55am and 2:50pm - 3:10pm during school term	29 March 2021	Western Bay of Plenty District Council Speed Limits Bylaw 2020	N/A
40	Sunset Dr, Paengaroa – from 70 m west of Old Coach Rd (RP 200) to Old Coach Rd (RP 270)  School Zone, Operating times are:  8:20am - 8:55am and 2:50pm - 3:10pm during school term	29 March 2021	Western Bay of Plenty District Council Speed Limits Bylaw 2020	N/A

40	Black Rd, Paengaroa – from Old Coach Rd (RP 0) to 55 m east of Old Coach Rd (RP 55)  School Zone, Operating times are:  8:20am - 8:55am and 2:50pm - 3:10pm during school term	29 March 2021	Western Bay of Plenty District Council Speed Limits Bylaw 2020	N/A
----	--	---------------	---	-----