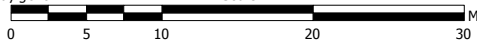
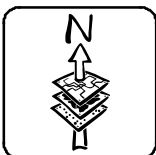


Produced using ArcMap by the Western Bay of Plenty District Council GIS Team.
Crown copyright reserved. LINZ digital license no. HN/352200/03 & TD093522.
Location of services is indicative only. Council accepts no liability for any error.
Archaeological data supplied by NZ Archaeological Assoc./Dept. of Conservation.

Email: gis@westernbay.govt.nz Scale A4 - 1:500
Date: 13/06/2013
Operator: mlb
Map: E:\Shape\DistrictPlan\District Plan - Plan Changes-New Format\Built Heritage



**DISTRICT PLAN
BUILT HERITAGE FEATURE 66
BRIDGE (CATEGORY B)**





U13/8

Pt Allot 5
SO 1765

Produced using ArcMap by the Western Bay of Plenty District Council GIS Team.
Crown copyright reserved. LINZ digital license no. HN/352200/03 & TD093522.
Location of services is indicative only. Council accepts no liability for any error.
Archaeological data supplied by NZ Archaeological Assoc/Dept. of Conservation.

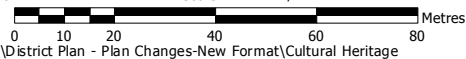
Email: gis@westernbay.govt.nz

Scale A4 - 1:1,500

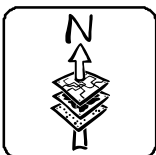
Date: 22/11/2012

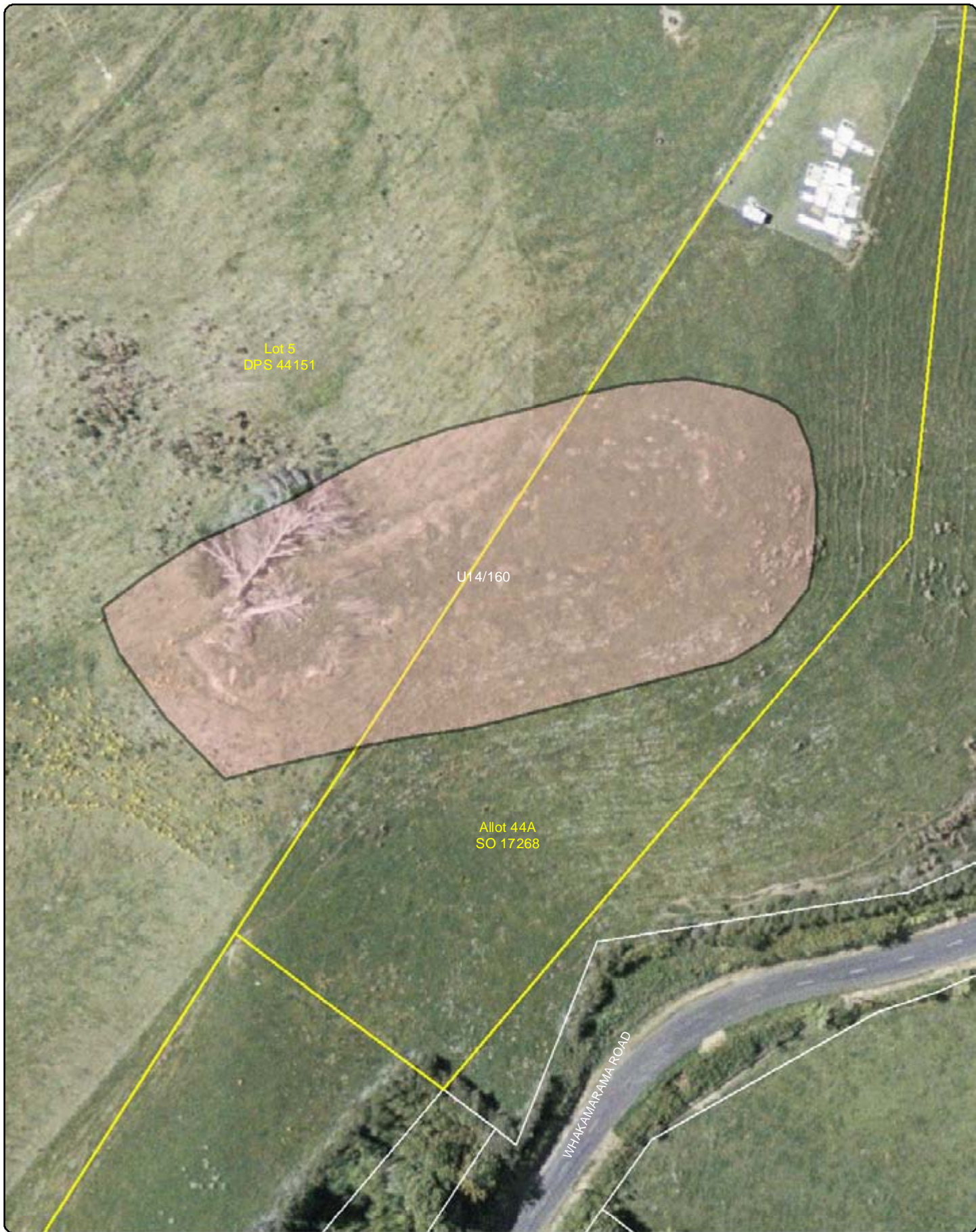
Operator: mlb

Map: E:\Shape\DistrictPlan\District Plan - Plan Changes-New Format\Cultural Heritage



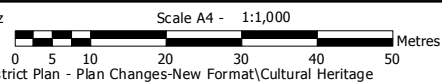
DISTRICT PLAN
CULTURAL HERITAGE FEATURE 106
ONGARE POINT PA



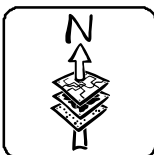


Produced using ArcMap by the Western Bay of Plenty District Council GIS Team.
 Crown copyright reserved. LINZ digital license no. HN/352200/03 & TD093522.
 Location of services is indicative only. Council accepts no liability for any error.
 Archaeological data supplied by NZ Archaeological Assoc/Dept. of Conservation.

Email: gis@westernbay.govt.nz
 Date: 22/11/2012
 Operator: mlb
 Map: E:\Shape\DistrictPlan\District Plan - Plan Changes-New Format\Cultural Heritage



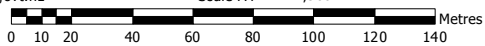
DISTRICT PLAN
 CULTURAL HERITAGE FEATURE 107
 TAWHITINUI PA



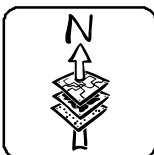


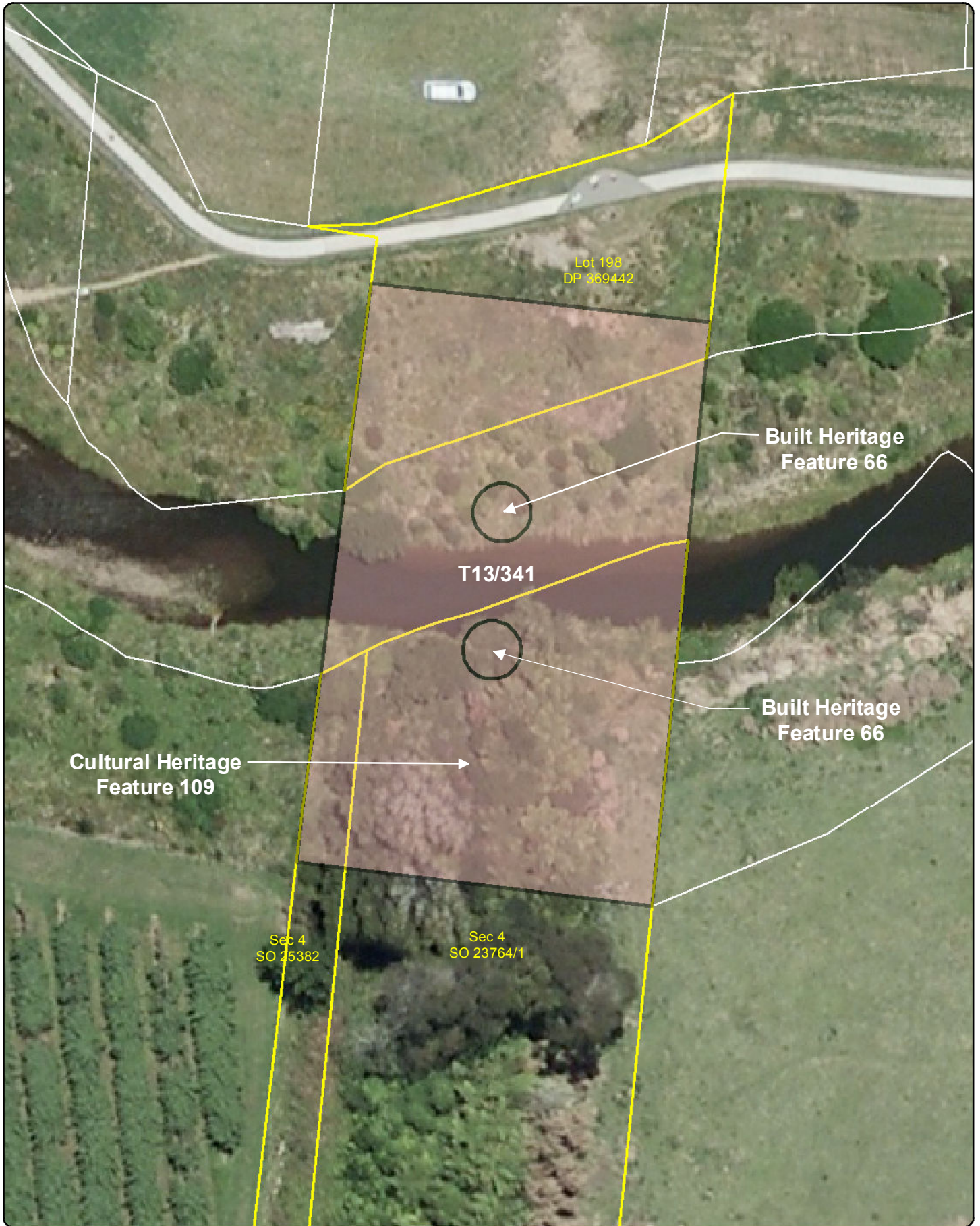
Produced using ArcMap by the Western Bay of Plenty District Council GIS Team.
Crown copyright reserved. LINZ digital license no. HN/352200/03 & TD093522.
Location of services is indicative only. Council accepts no liability for any error.
Archaeological data supplied by NZ Archaeological Assoc./Dept. of Conservation.

Email: gis@westernbay.govt.nz Scale A4 - 1:2,500
Date: 22/11/2012
Operator: mlb
Map: E:\Shape\DistrictPlan\District Plan - Plan Changes-New Format\Cultural Heritage



DISTRICT PLAN
CULTURAL HERITAGE FEATURE 108
TE IRIHANGA PA





Produced using ArcMap by the Western Bay of Plenty District Council GIS Team.
Crown copyright reserved. LINZ digital license no. HN/352200/03 & TD093522.
Location of services is indicative only. Council accepts no liability for any error.
Archaeological data supplied by NZ Archaeological Assoc./Dept. of Conservation.

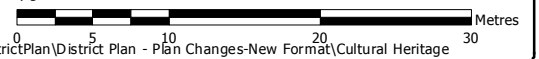
Email: gis@westernbay.govt.nz

Scale A4 - 1:500

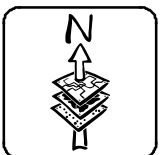
Date: 13/06/2013

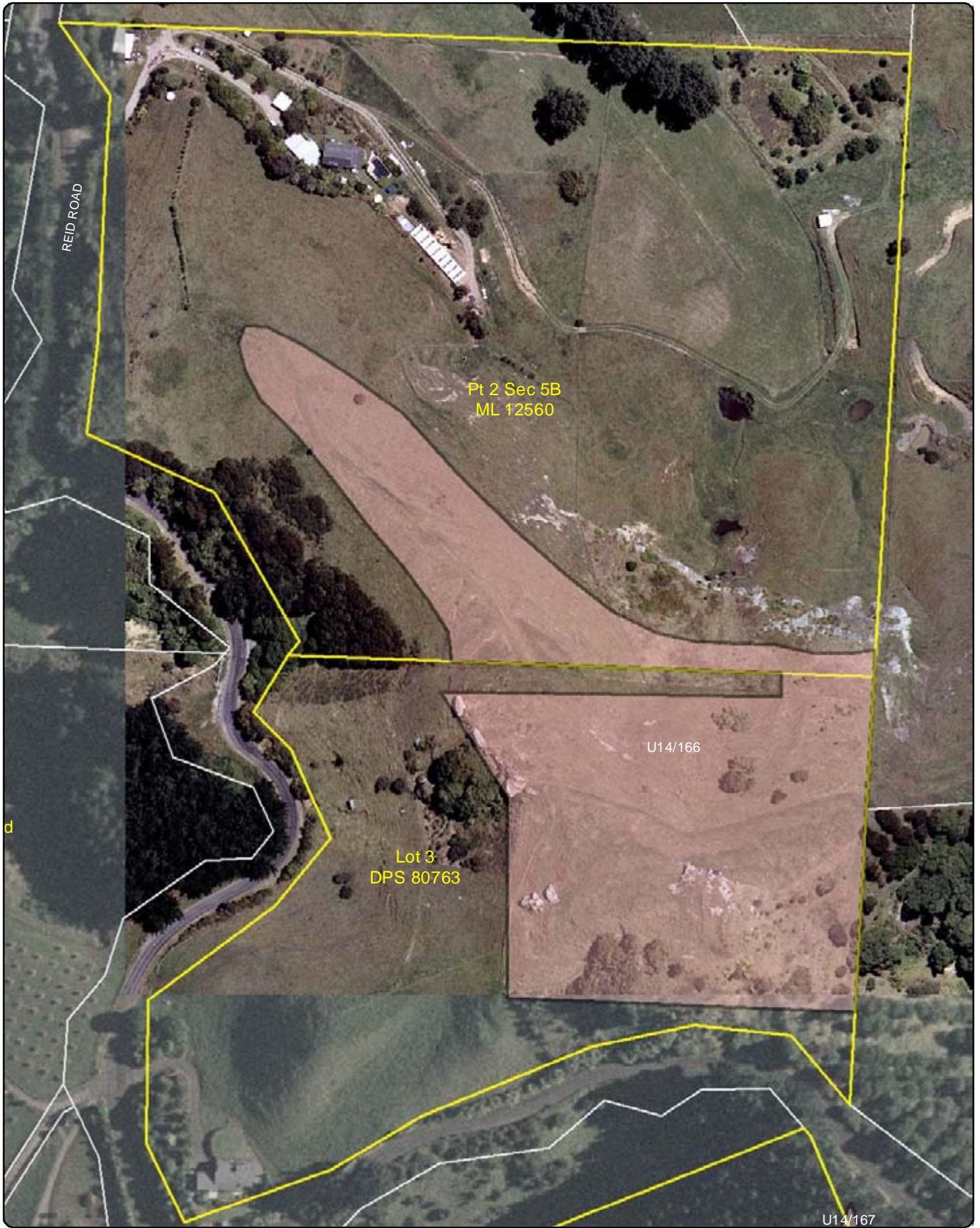
Operator: mlb

Map: E:\Shape\DistrictPlan\District Plan - Plan Changes-New Format\Cultural Heritage



DISTRICT PLAN
CULTURAL HERITAGE FEATURE 109
BRIDGE EMBANKMENT

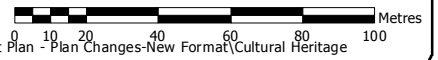




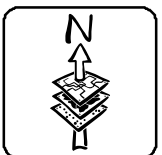
Produced using ArcMap by the Western Bay of Plenty District Council GIS Team.
 Crown copyright reserved. LINZ digital license no. HN/352200/03 & TD093522.
 Location of services is indicative only. Council accepts no liability for any error.
 Archaeological data supplied by NZ Archaeological Assoc/Dept. of Conservation.

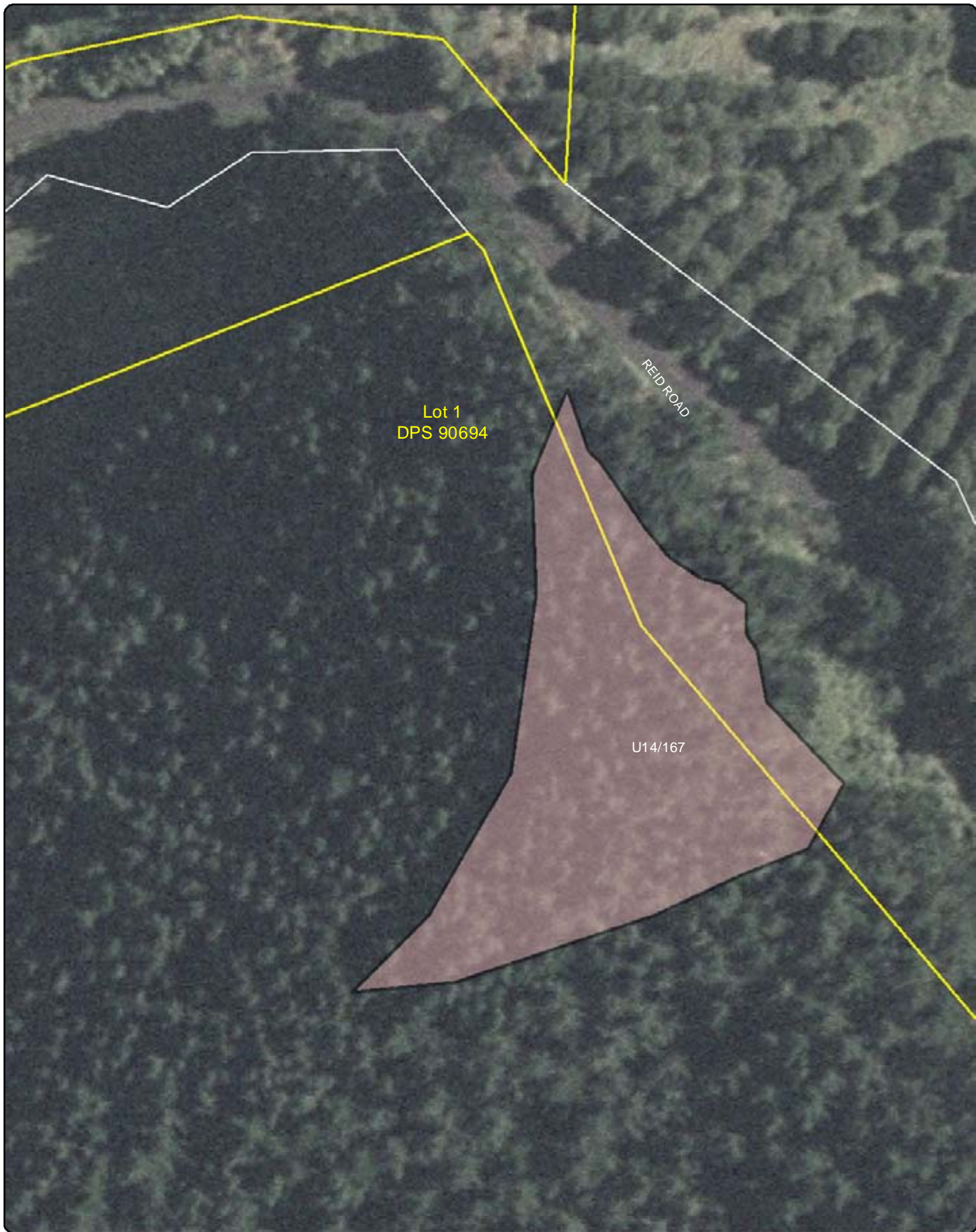
Email: gis@westernbay.govt.nz
 Date: 23/11/2012
 Operator: mlb
 Map: E:\Shape\DistrictPlan\District Plan - Plan Changes-New Format\Cultural Heritage

Scale A4 - 1:2,100



DISTRICT PLAN
 CULTURAL HERITAGE FEATURE 110
 TE WHARO PA



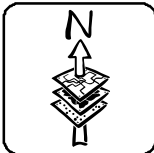


Produced using ArcMap by the Western Bay of Plenty District Council GIS Team.
 Crown copyright reserved. LINZ digital license no. HN/352200/03 & TD093522.
 Location of services is indicative only. Council accepts no liability for any error.
 Archaeological data supplied by NZ Archaeological Assoc/Dept. of Conservation.

Email: gis@westernbay.govt.nz Scale A4 - 1:1,000
 Date: 23/11/2012
 Operator: mlb
 Map: E:\Shape\DistrictPlan\District Plan - Plan Changes-New Format\Cultural Heritage



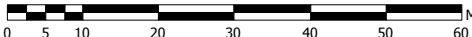
DISTRICT PLAN
 CULTURAL HERITAGE FEATURE 111
 TE WHARO PA



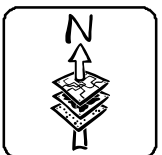


Produced using ArcMap by the Western Bay of Plenty District Council GIS Team.
 Crown copyright reserved. LINZ digital license no. HN/352200/03 & TD093522.
 Location of services is indicative only. Council accepts no liability for any error.
 Archaeological data supplied by NZ Archaeological Assoc./Dept. of Conservation.

Email: gis@westernbay.govt.nz Scale A4 - 1:1,000
 Date: 22/11/2012
 Operator: mlb
 Map: E:\Shape\DistrictPlan\District Plan - Plan Changes-New Format\Cultural Heritage




DISTRICT PLAN
 CULTURAL HERITAGE FEATURE 112
 MAUNGARANGI PA





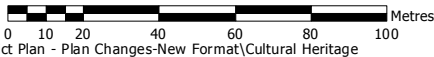
Lot 9
DP 367866

U14/244

Produced using ArcMap by the Western Bay of Plenty District Council GIS Team.
Crown copyright reserved. LINZ digital license no. HN/352200/03 & TD093522.
Location of services is indicative only. Council accepts no liability for any error.
Archaeological data supplied by NZ Archaeological Assoc/Dept. of Conservation.

Email: gis@westernbay.govt.nz
Date: 22/11/2012
Operator: mlb

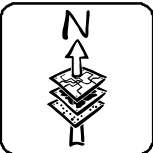
Scale A4 - 1:2,000

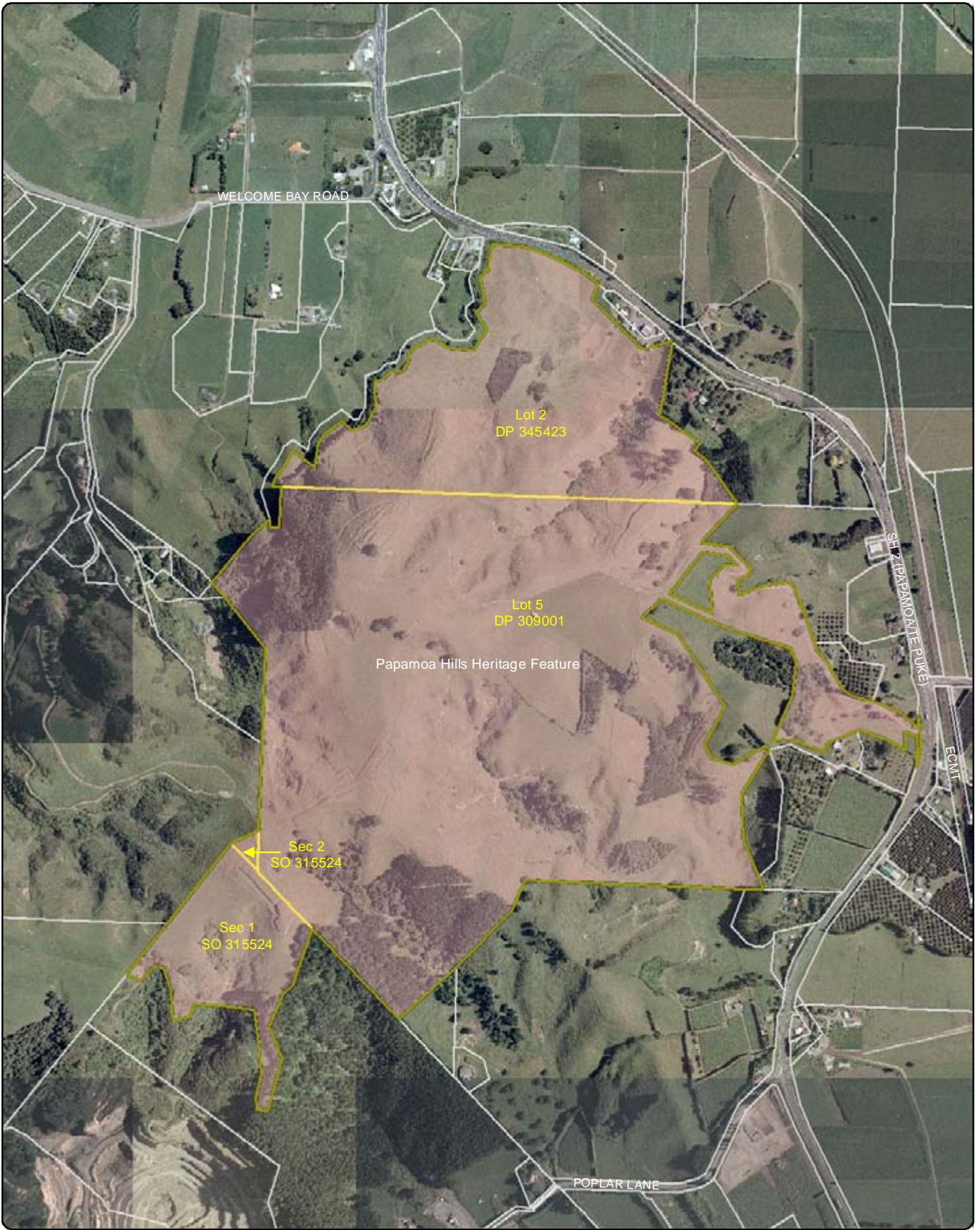


Map: E:\Shape\DistrictPlan\District Plan - Plan Changes-New Format\Cultural Heritage



DISTRICT PLAN
CULTURAL HERITAGE FEATURE 113
TE INAHI PA





Produced using ArcMap by the Western Bay of Plenty District Council GIS Team.
 Crown copyright reserved. LINZ digital license no. HN/352200/03 & TD093522.
 Location of services is indicative only. Council accepts no liability for any error.
 Archaeological data supplied by NZ Archaeological Assoc/Dept. of Conservation.

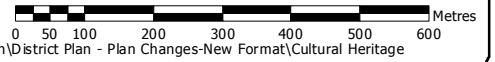
Email: gis@westernbay.govt.nz

Scale A4 - 1:11,000

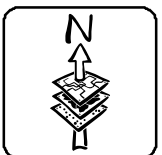
Date: 23/11/2012

Operator: mlb

Map: E:\Shape\DistrictPlan\District Plan - Plan Changes-New Format\Cultural Heritage



DISTRICT PLAN
 CULTURAL HERITAGE FEATURE 114
 PAPAMOIA HILLS REGIONAL PARK





Produced using ArcMap by the Western Bay of Plenty District Council GIS Team.
 Crown copyright reserved. LINZ digital license no. HN/352200/03 & TD093522.
 Location of services is indicative only. Council accepts no liability for any error.
 Archaeological data supplied by NZ Archaeological Assoc./Dept. of Conservation.

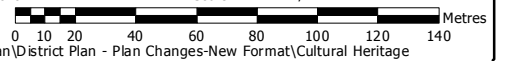
Email: gis@westernbay.govt.nz

Scale A4 - 1:2,500

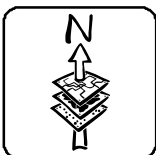
Date: 23/11/2012

Operator: mlb

Map: E:\Shape\DistrictPlan\District Plan - Plan Changes-New Format\Cultural Heritage



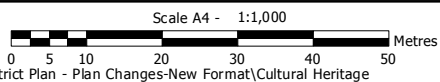
DISTRICT PLAN
 CULTURAL HERITAGE FEATURE 115
 OWHARA PA - HEREKAKI PA



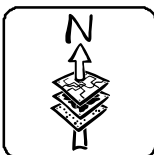


Produced using ArcMap by the Western Bay of Plenty District Council GIS Team.
 Crown copyright reserved. LINZ digital license no. HN/352200/03 & TD093522.
 Location of services is indicative only. Council accepts no liability for any error.
 Archaeological data supplied by NZ Archaeological Assoc/Dept. of Conservation.

Email: gis@westernbay.govt.nz
 Date: 22/11/2012
 Operator: mlb
 Map: E:\Shape\DistrictPlan\District Plan - Plan Changes-New Format\Cultural Heritage



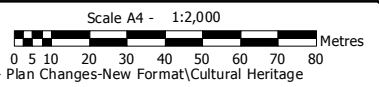
DISTRICT PLAN
 CULTURAL HERITAGE FEATURE 116
 PUKEMAIRE PA - FORT COLVILLE



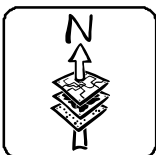


Produced using ArcMap by the Western Bay of Plenty District Council GIS Team.
 Crown copyright reserved. LINZ digital license no. HN/352200/03 & TD093522.
 Location of services is indicative only. Council accepts no liability for any error.
 Archaeological data supplied by NZ Archaeological Assoc/Dept. of Conservation.

Email: gis@westernbay.govt.nz
 Date: 23/11/2012
 Operator: mlb
 Map: E:\Shape\DistrictPlan\District Plan - Plan Changes-New Format\Cultural Heritage



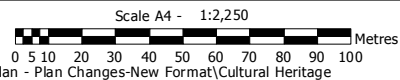
DISTRICT PLAN
 CULTURAL HERITAGE FEATURE 117
 PUKEPOTO PA



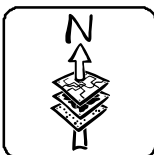


Produced using ArcMap by the Western Bay of Plenty District Council GIS Team.
 Crown copyright reserved. LINZ digital license no. HN/352200/03 & TD093522.
 Location of services is indicative only. Council accepts no liability for any error.
 Archaeological data supplied by NZ Archaeological Assoc/Dept. of Conservation.

Email: gis@westernbay.govt.nz
 Date: 23/11/2012
 Operator: mlb
 Map: E:\Shape\DistrictPlan\District Plan - Plan Changes-New Format\Cultural Heritage



DISTRICT PLAN
 CULTURAL HERITAGE FEATURE 118 - OKUREI PA,
 119 - SCARP/PIT, 120 - PA SITE,
 121-TIROTIROWHETU PA



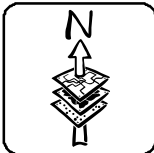


Produced using ArcMap by the Western Bay of Plenty District Council GIS Team.
 Crown copyright reserved. LINZ digital license no. HN/352200/03 & TD093522.
 Location of services is indicative only. Council accepts no liability for any error.
 Archaeological data supplied by NZ Archaeological Assoc/Dept. of Conservation.

Email: gis@westernbay.govt.nz Scale A4 - 1:1,500
 Date: 23/11/2012
 Operator: mlb
 Map: E:\Shape\DistrictPlan\District Plan - Plan Changes-New Format\Cultural Heritage



DISTRICT PLAN
 CULTURAL HERITAGE FEATURE 122
 PA SITE



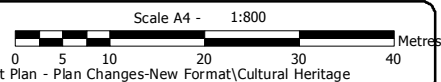


Pt A144
ML 15308

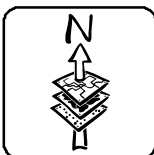
V14/31

Produced using ArcMap by the Western Bay of Plenty District Council GIS Team.
Crown copyright reserved. LINZ digital license no. HN/352200/03 & TD093522.
Location of services is indicative only. Council accepts no liability for any error.
Archaeological data supplied by NZ Archaeological Assoc./Dept. of Conservation.

Email: gis@westernbay.govt.nz
Date: 23/11/2012
Operator: mlb
Map: E:\Shape\DistrictPlan\District Plan - Plan Changes-New Format\Cultural Heritage



DISTRICT PLAN
CULTURAL HERITAGE FEATURE 123
PA SITE





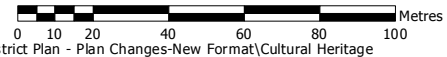
Pukehina M1B3
ML 20373

V14/3

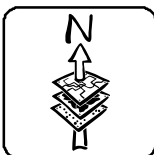
Produced using ArcMap by the Western Bay of Plenty District Council GIS Team.
Crown copyright reserved. LINZ digital license no. HN/352200/03 & TD093522.
Location of services is indicative only. Council accepts no liability for any error.
Archaeological data supplied by NZ Archaeological Assoc/Dept. of Conservation.

Email: gis@westernbay.govt.nz
Date: 23/11/2012
Operator: mlb
Map: E:\Shape\DistrictPlan\District Plan - Plan Changes-New Format\Cultural Heritage

Scale A4 - 1:2,000



DISTRICT PLAN
CULTURAL HERITAGE FEATURE 124
PUKEHINA PA/REDOUBT



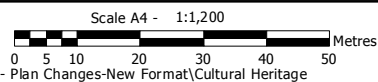


V14/5

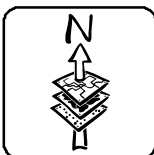
Pukehina M1B4
ML 20373

Produced using ArcMap by the Western Bay of Plenty District Council GIS Team.
 Crown copyright reserved. LINZ digital license no. HN/352200/03 & TD093522.
 Location of services is indicative only. Council accepts no liability for any error.
 Archaeological data supplied by NZ Archaeological Assoc./Dept. of Conservation.

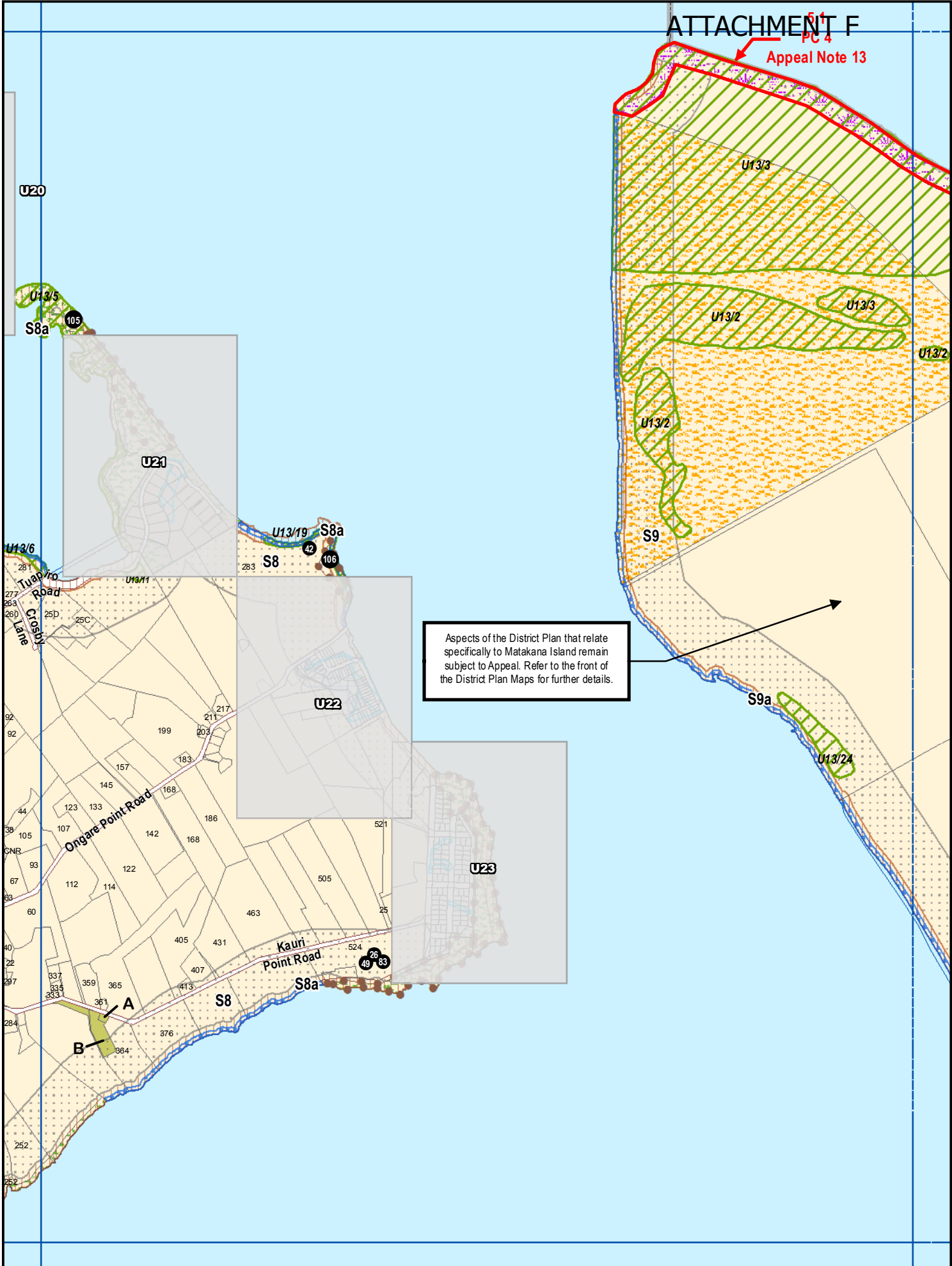
Email: gis@westernbay.govt.nz
 Date: 23/11/2012
 Operator: mlb
 Map: E:\Shape\DistrictPlan\District Plan - Plan Changes-New Format\Cultural Heritage



DISTRICT PLAN
 CULTURAL HERITAGE FEATURE 125
 WAEHEKE PA/KARAMURUMA PA



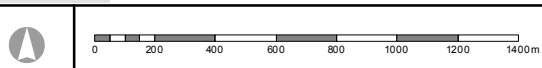
Appeal Note 13



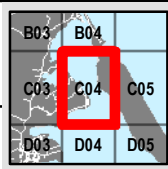
Aspects of the District Plan that relate specifically to Matakana Island remain subject to Appeal. Refer to the front of the District Plan Maps for further details.

Crown Copyright Reserved. LINZ Digital Licence Number HN/352200/03 & TDO03522.

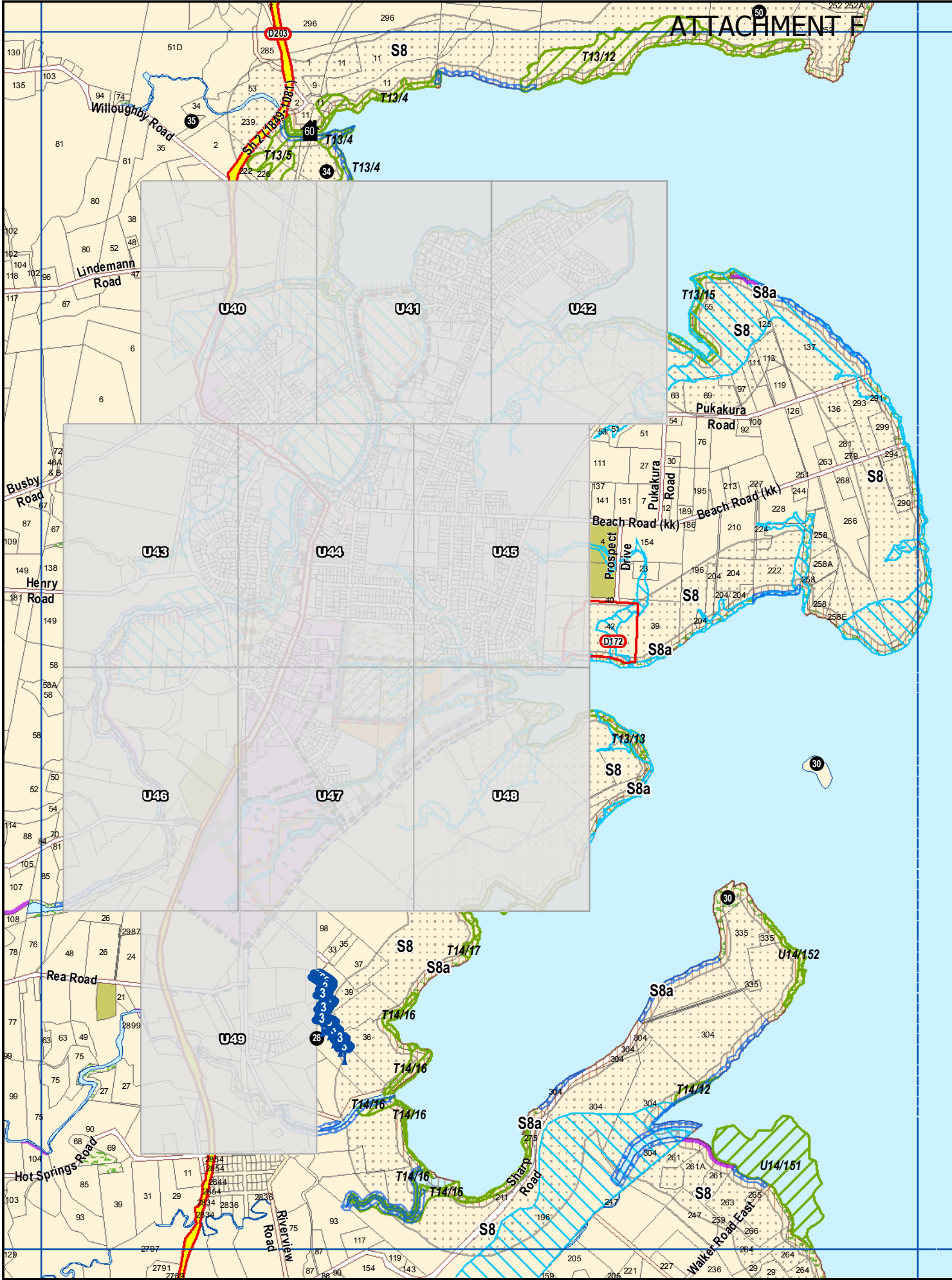
C04 Rural Series



Scale 1:25000 (A4)

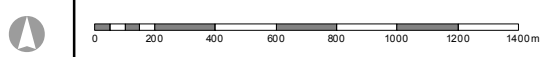


Revision Date: 6 February 2013
PC28-44: 9 Feb 2013 Notified



Crown Copyright Reserved. LINZ Digital Licence Number HN/352200/03 & TDO03522.

D03 Rural Series

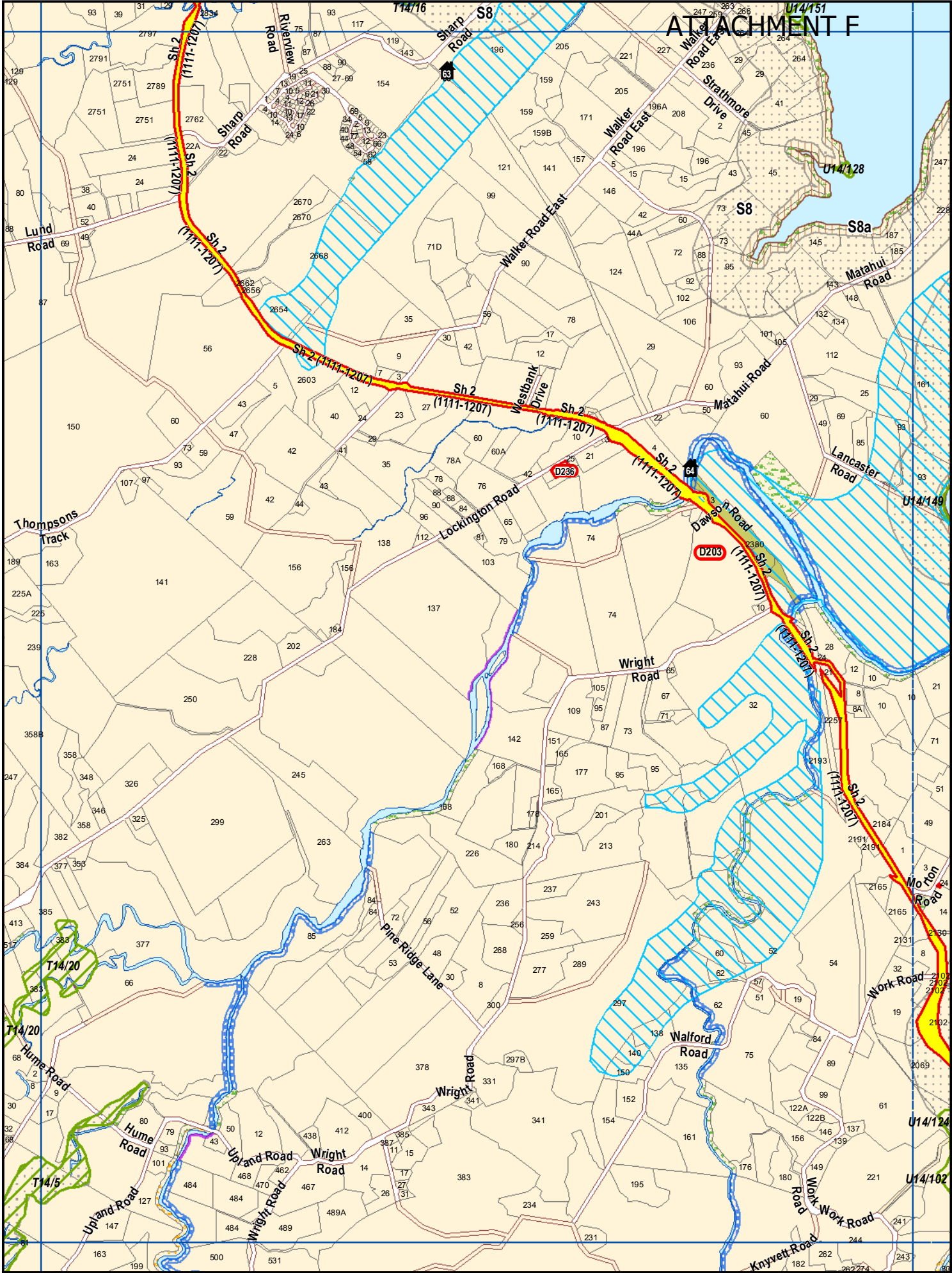


Scale 1:25000 (A4)

C02	C03	C04
D02	D03	D04
E02	E03	E04

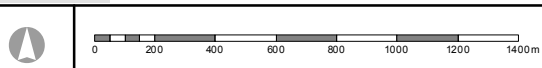


Revision Date: 16 June 2012
PC28-44: 9 Feb 2013 Notified



Crown Copyright Reserved. LINZ Digital Licence Number HN/352200/03 & TDO03522.

E03 Rural Series



D02	D03	D04
E02	E03	E04
F02	F03	F04



Revision Date: 6 February 2012
 PC28-44: 9 Feb 2013 Notified