

Crown Copyright Reserved. LINZ Digital Licence Number HN/352200/03 & TDO03522.

E03 Rural Series

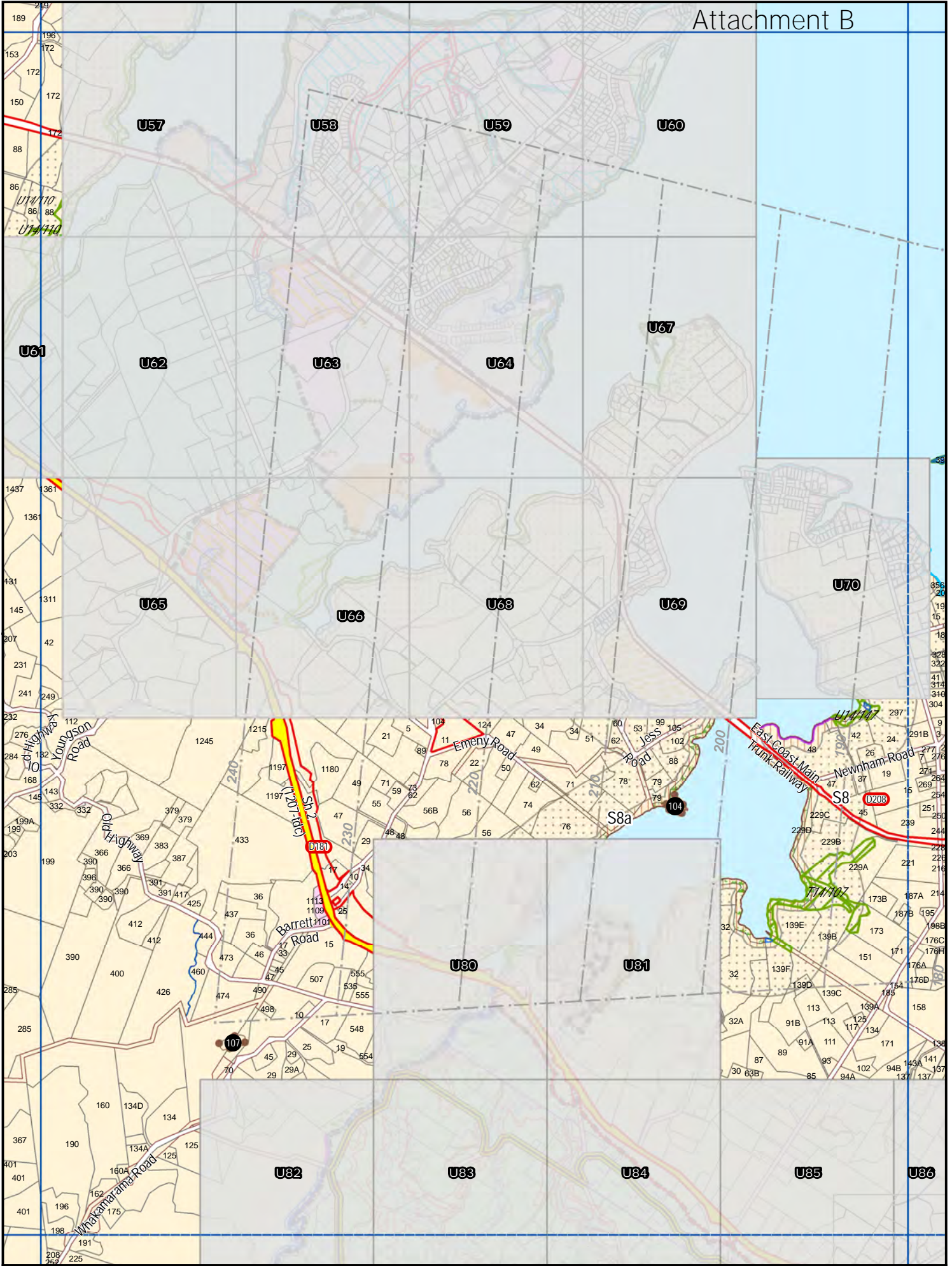


Scale 1:25000 (A4)

D02	D03	D04
E02	E03	E04
F02	F03	F04



Revision Date: 6 February 2012
 PC28-44: 27 July 2013 - Decisions



Crown Copyright Reserved. LINZ Digital Licence Number HN/352200/03 & TDO03522.

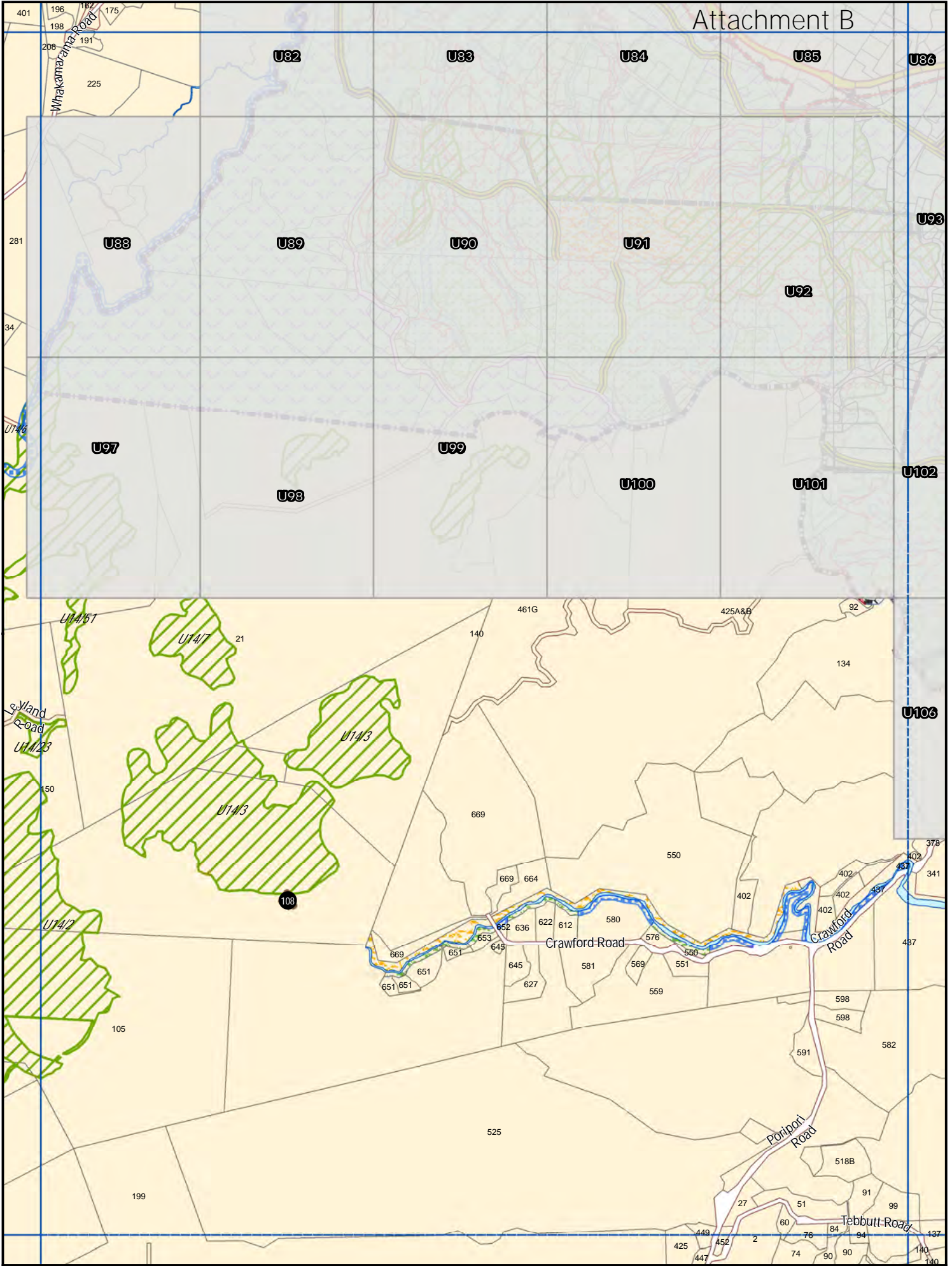
F05 Rural Series



Scale 1:25000 (A4)

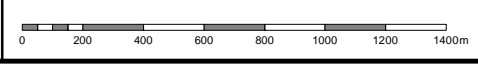


Revision Date: 6 February 2012
PC28-44: 27 July 2013 - Decisions



Crown Copyright Reserved. LINZ Digital Licence Number HN/352200/03 & TDO03522.

G05 Rural Series

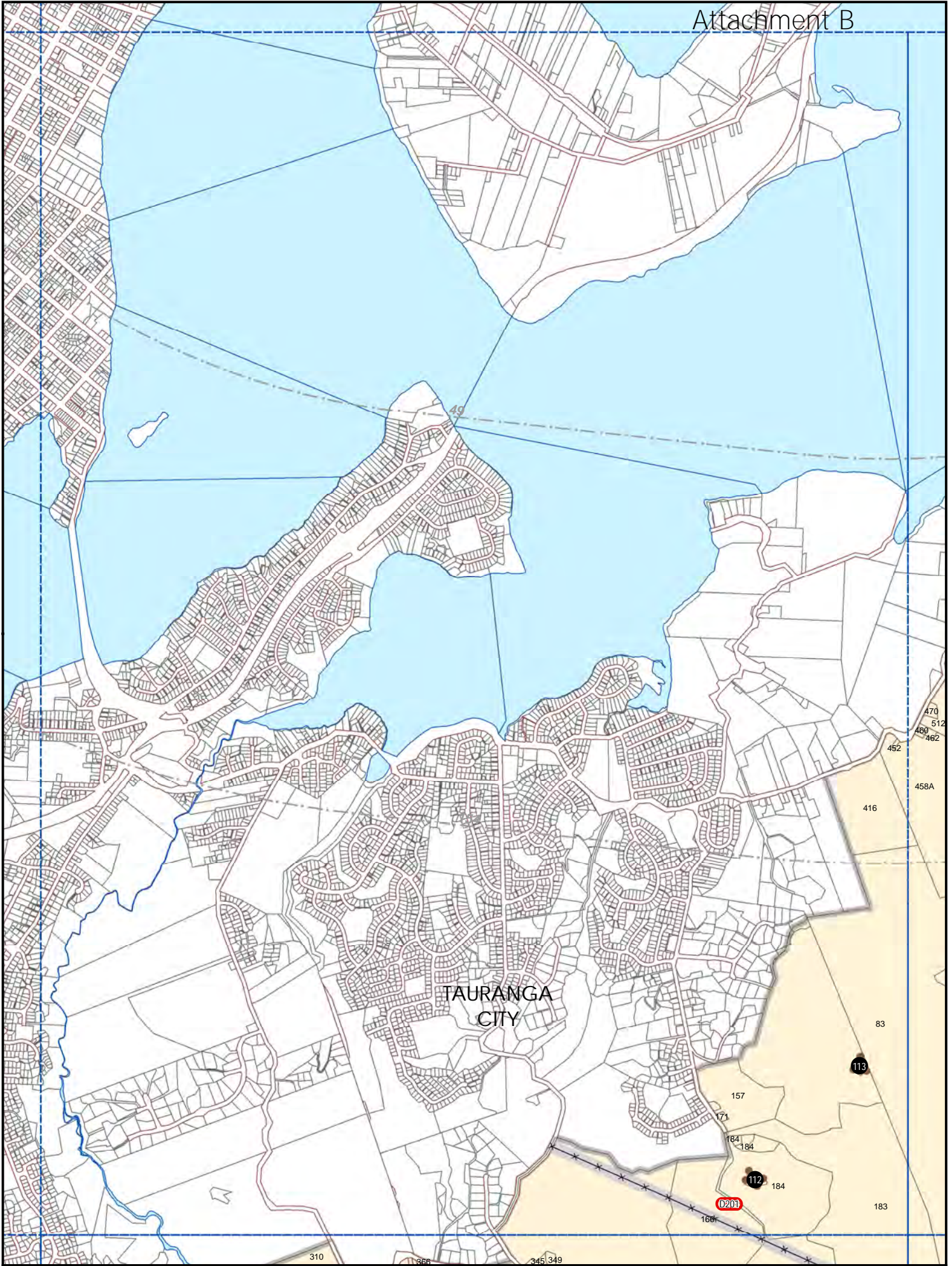


Scale 1:25000 (A4)

F04	F05	F06
G04	G05	G06
H04	H05	H06



Revision Date: 6 February 2012
 PC28-44: 27 July 2013 - Decisions



Crown Copyright Reserved. LINZ Digital Licence Number HN/352200/03 & TDO03522.



G08 Rural Series

Scale 1:25000 (A4)

F07	G08	G09
H07	H08	H09

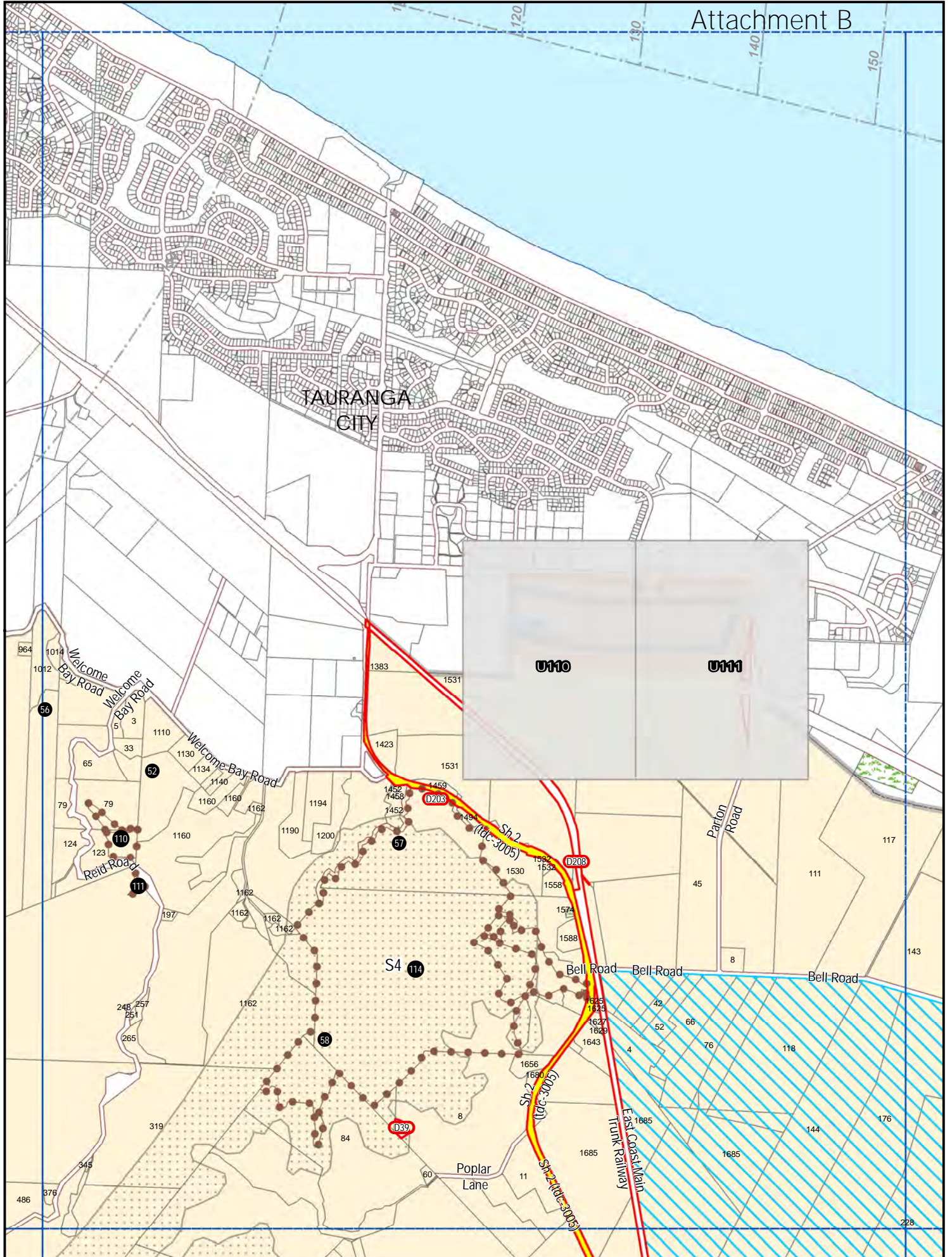
Western Bay of Plenty District Council

Revision Date: 6 February 2012
PC28-44: 27 July 2013 - Decisions

TAURANGA CITY

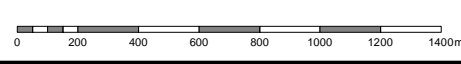
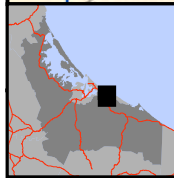
U110

U111

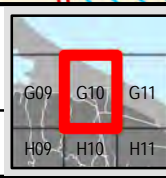


Crown Copyright Reserved. LINZ Digital Licence Number HN/352200/03 & TDO03522.

G10 Rural Series



Scale 1:25000 (A4)



Revision Date: 6 February 2012
PC28-44: 27 July 2013 - Decisions

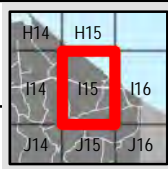


Crown Copyright Reserved. LINZ Digital Licence Number HN/352200/03 & TDO03522.

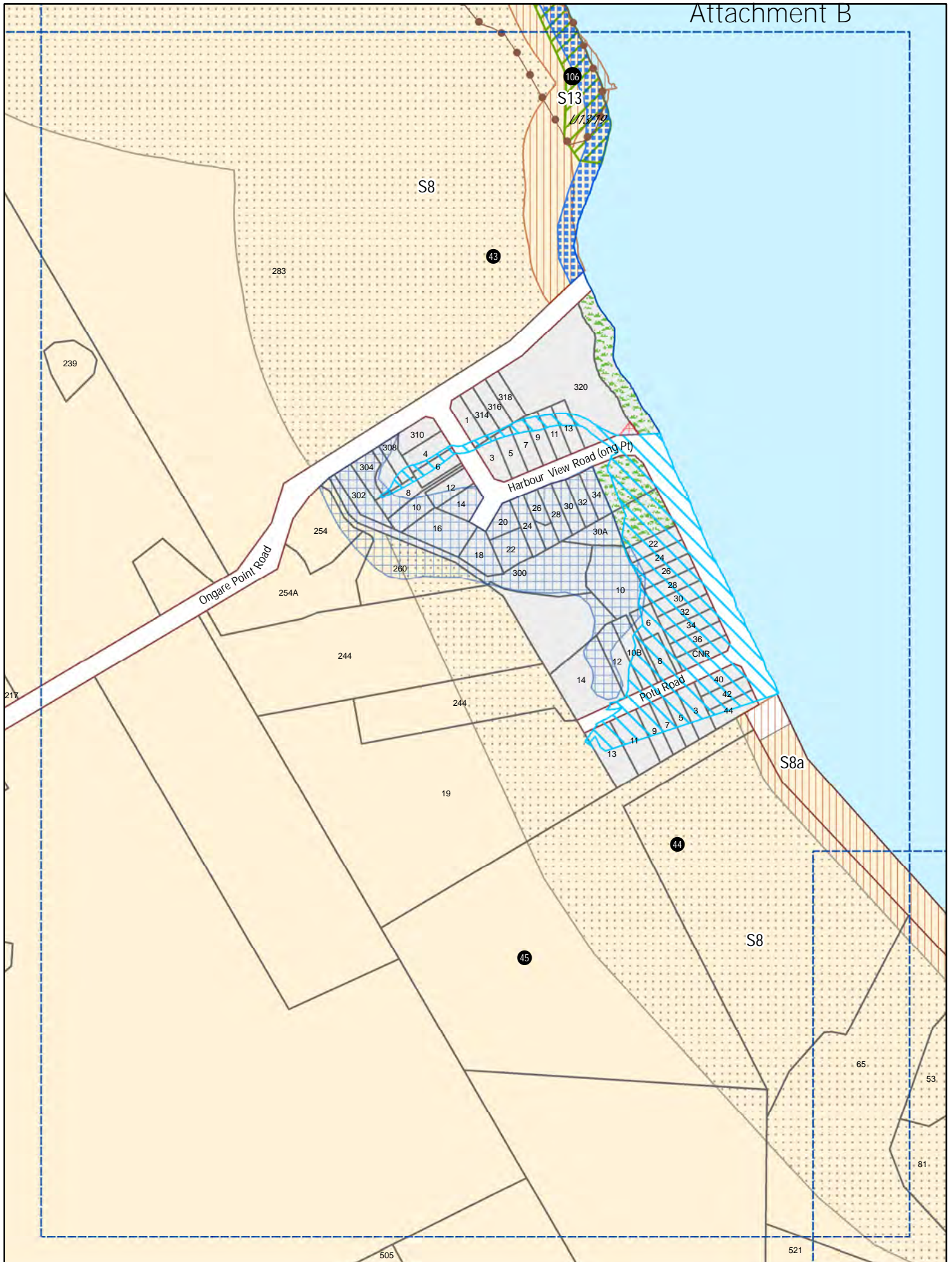
115 Rural Series



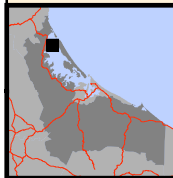
Scale 1:25000 (A4)



Revision Date: 6 February 2012
 PC28-44: 27 July 2013 - Decisions

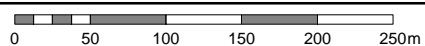


Crown Copyright Reserved. LINZ Digital Licence Number HN/352200/03 & TDO03522.



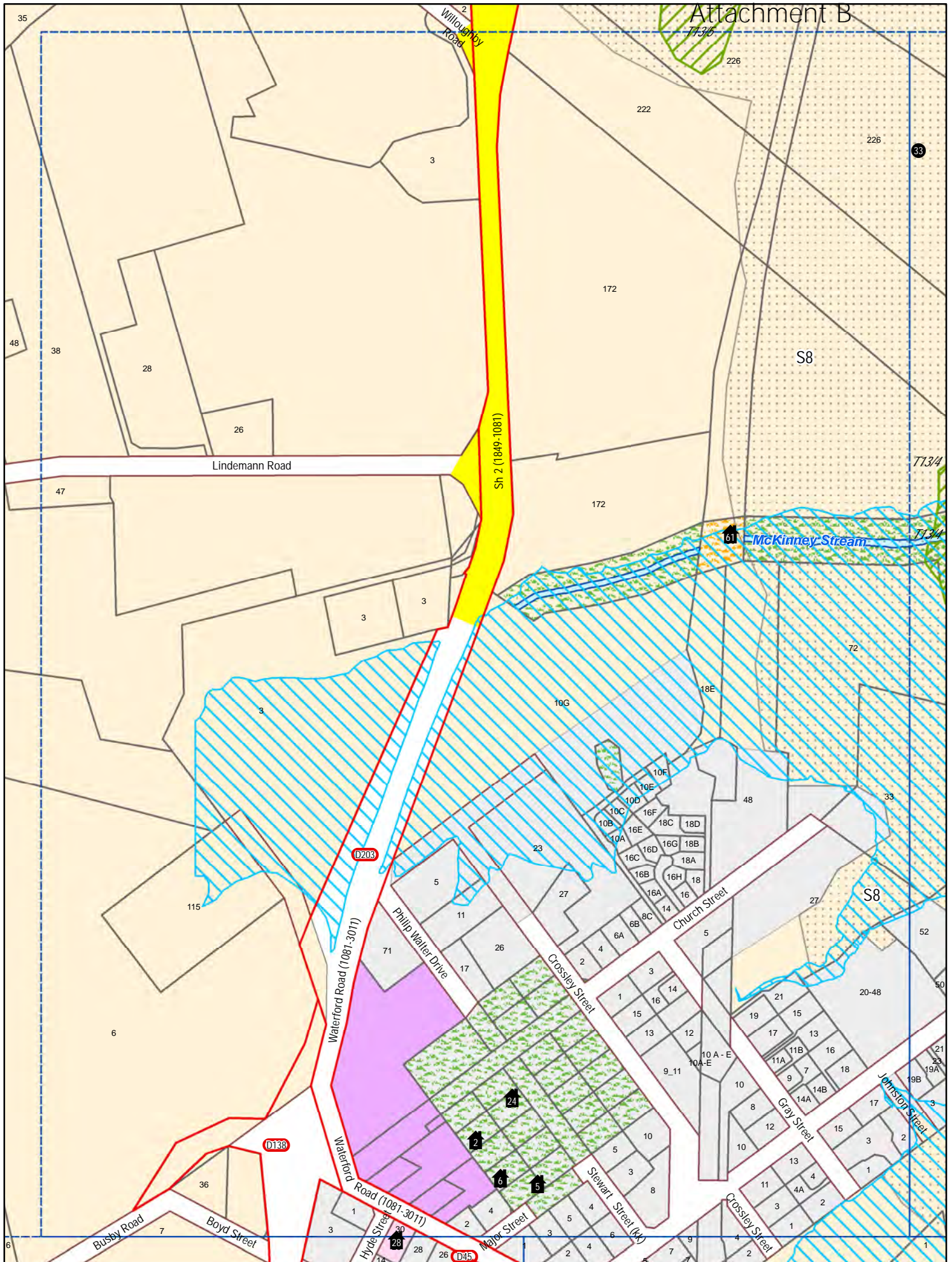
U22

Ongare Point



Scale 1:5000 (A4)

Revision Date: 6 February 2013
PC 28-44: 27 July 2013 - Decisions



Crown Copyright Reserved. LINZ Digital Licence Number HN/352200/03 & TDO03622.



U40

Katikati

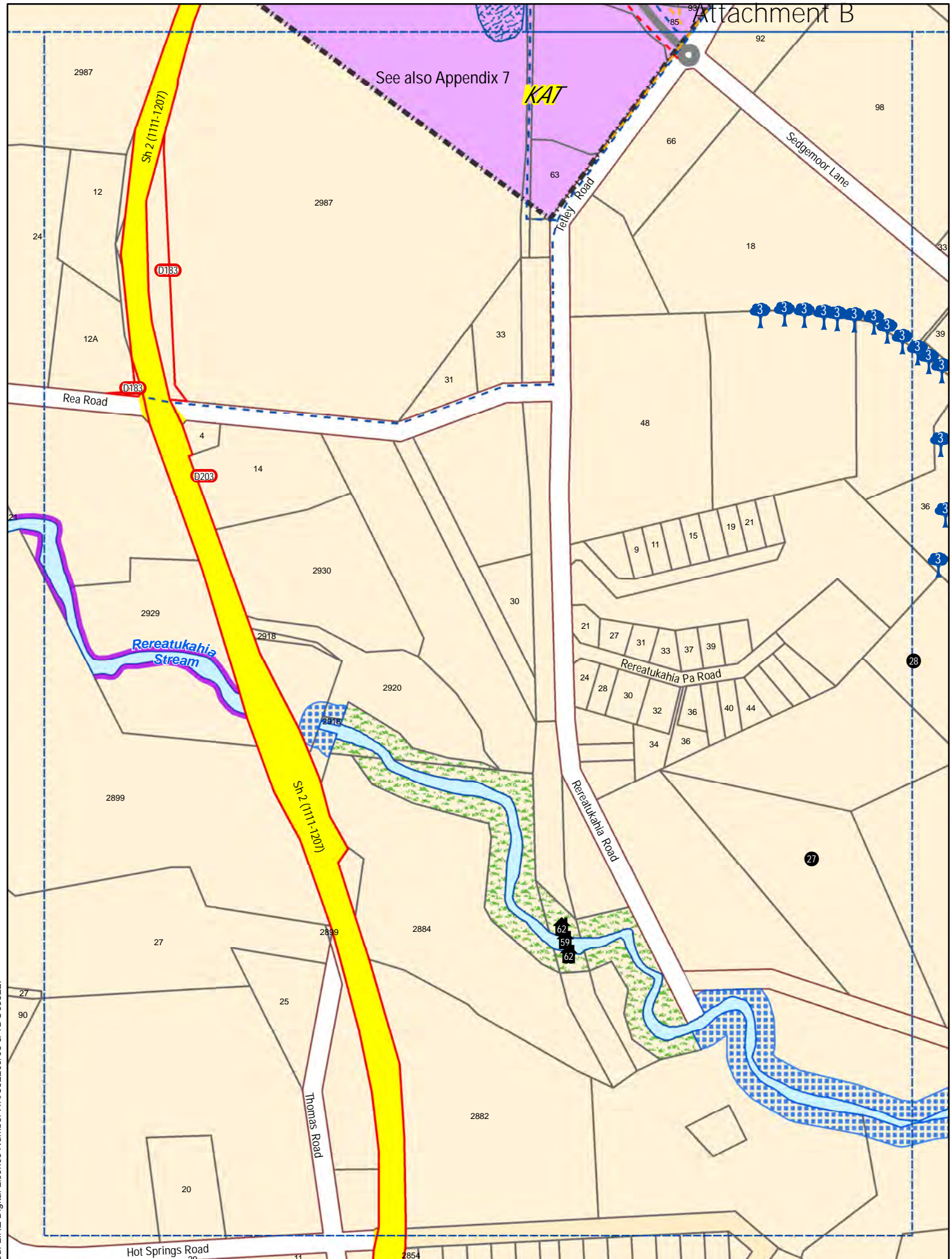


Scale 1:5000 (A4)

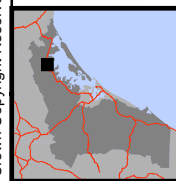
Revision Date: 6 February 2013
PC 28-44: 27 July 2013 - Decisions

See also Appendix 7

KAT

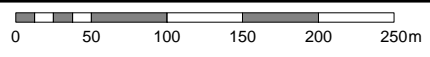


Crown Copyright Reserved. LINZ Digital Licence Number HN/352200/03 & TDO03622.



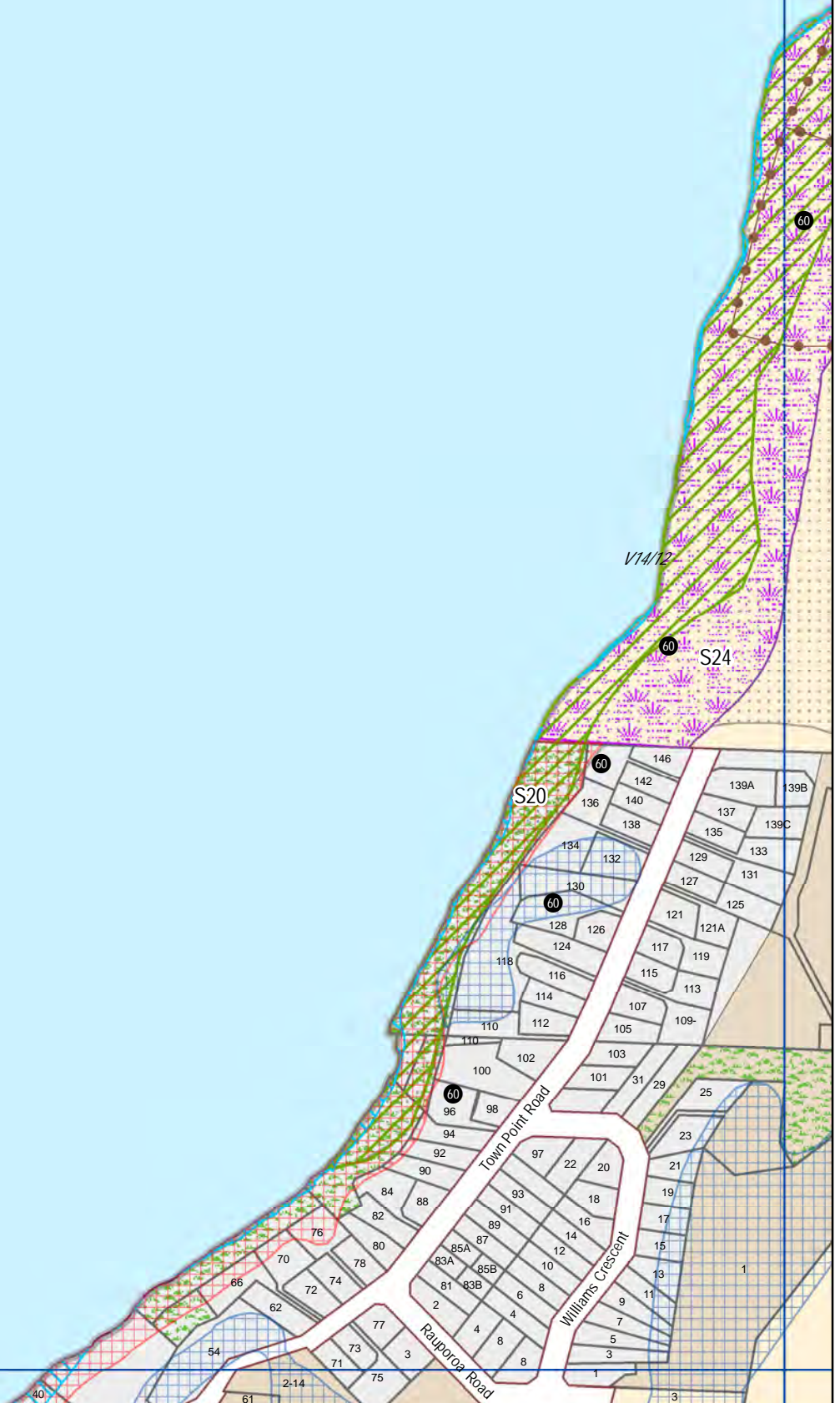
U49

Katikati

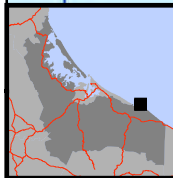


Scale 1:5000 (A4)

Revision Date: 6 February 2013
PC 28-44: 27 July 2013 - Decisions

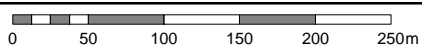
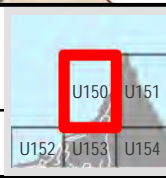


Crown Copyright Reserved. LINZ Digital Licence Number HN/3522200/03 & TDO03622.



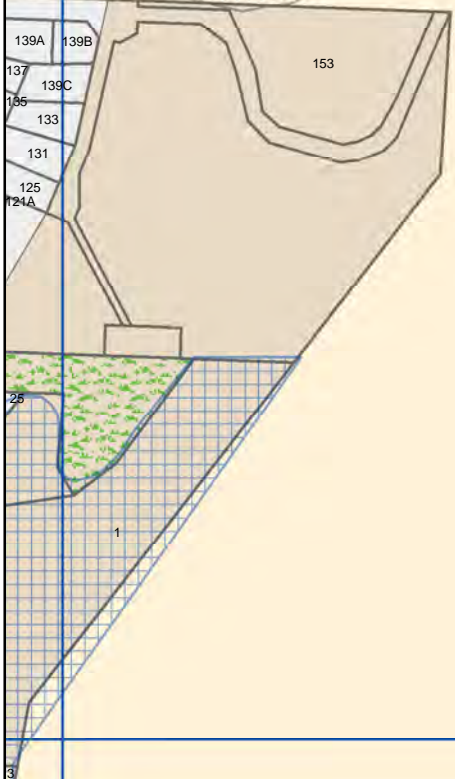
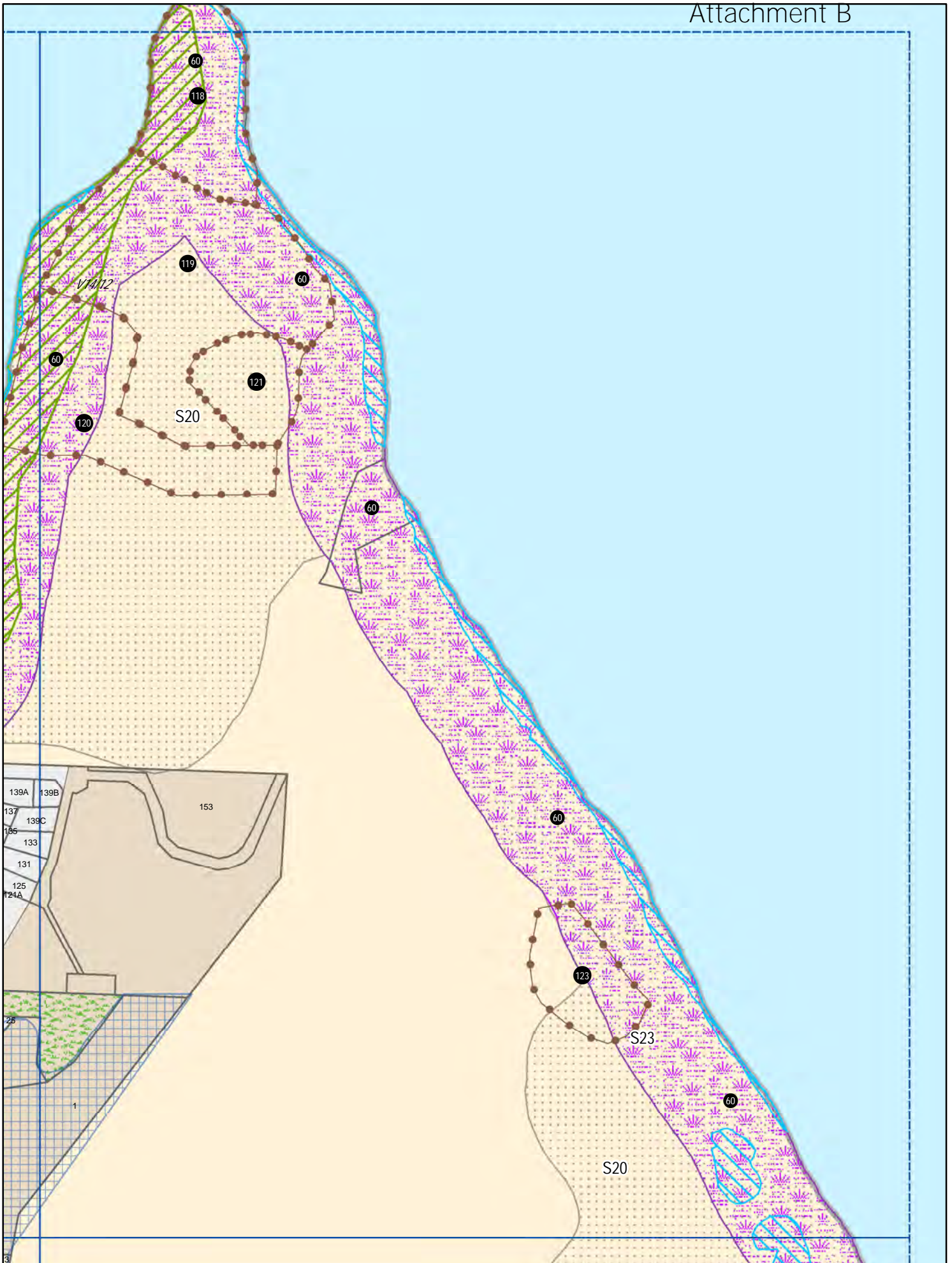
U150

Maketu

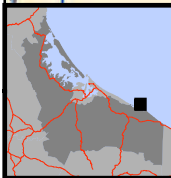


Scale 1:5000 (A4)

Revision Date: 6 February 2013
PC 28-44: 27 July 2013 - Decisions



Crown Copyright Reserved. LINZ Digital Licence Number HN/352200/03 & TDO03622.

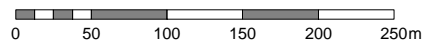


U151

Maketu



Revision Date: 6 February 2013
PC 28-44: 27 July 2013 - Decisions



Scale 1:5000 (A4)