

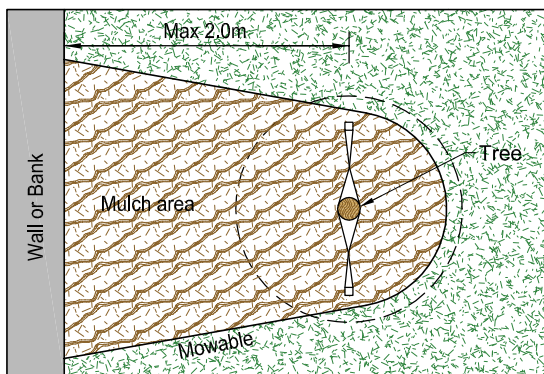
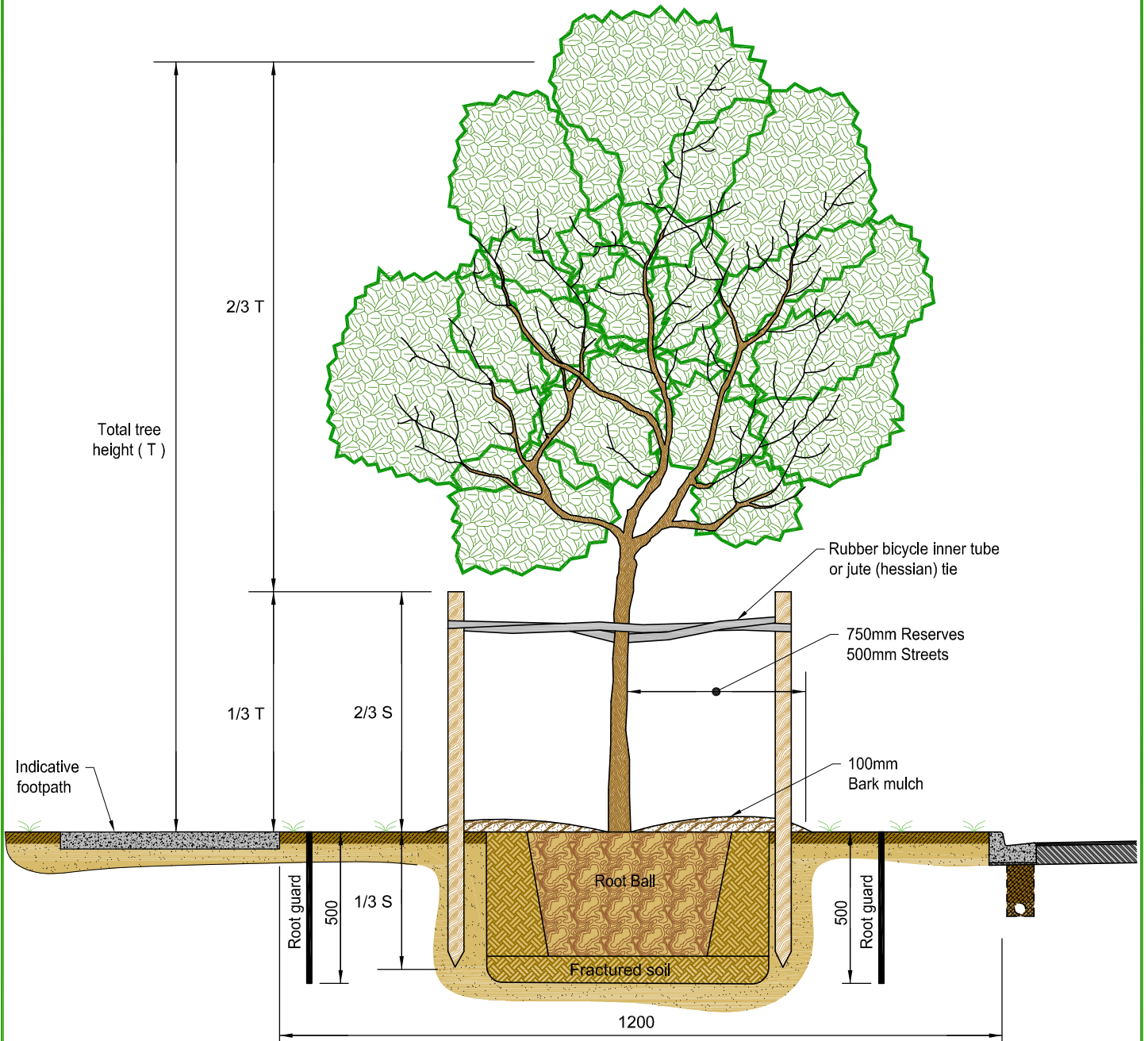
**STREET TREES**  
TREE LOCATION

**W201**

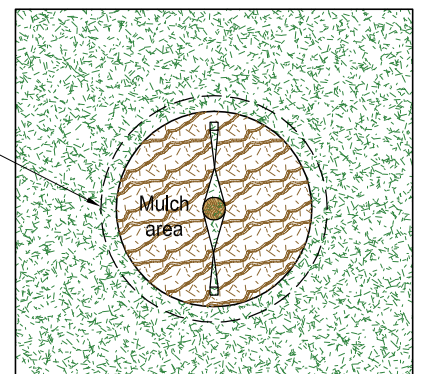
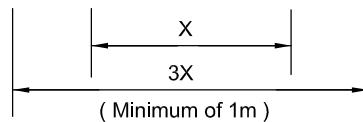
DEVELOPMENT CODE

VERSION 1  
AUG 09

1



PLAN OF MULCHABLE AREA  
BESIDE BANKS AND STRUCTURES



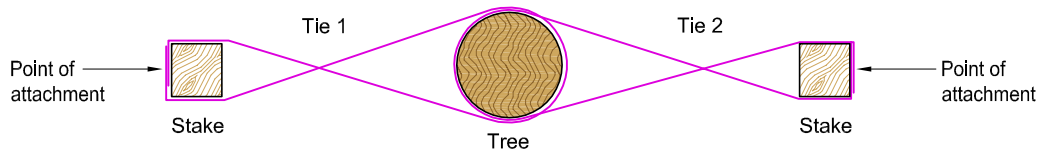
PLAN OF STANDARD  
MULCHABLE AREA

**STREET TREES**  
TREE PLANTING & MULCHABLE AREA

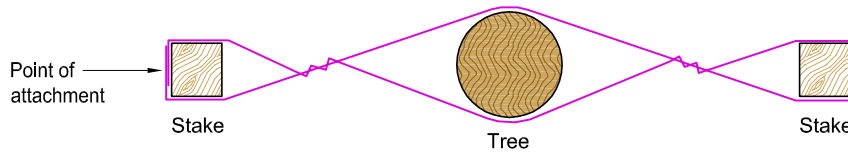
**W202**



EXAMPLE PHOTO



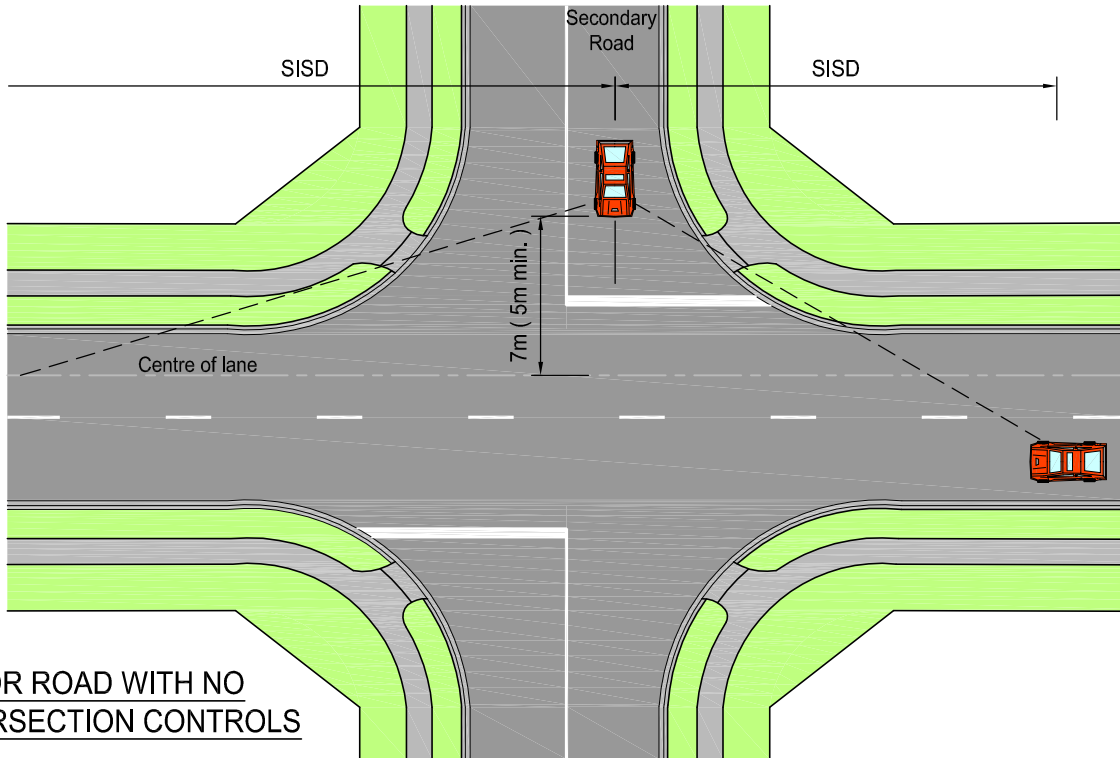
DOUBLE TIE



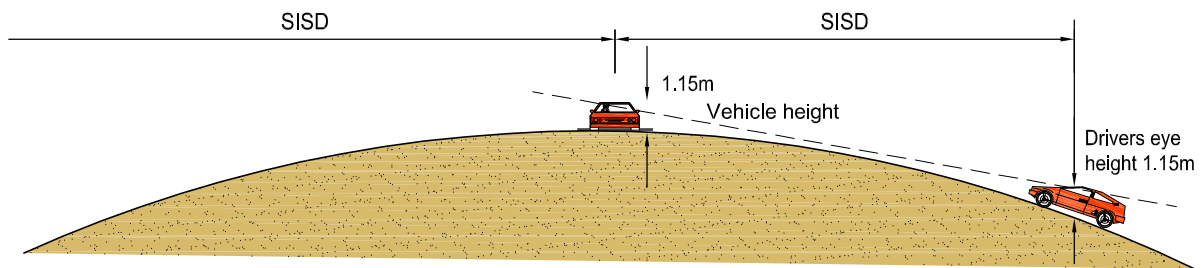
SINGLE TIE

## NOTES:

1. Plants shall be placed far enough back from the intersection so that even when mature the safe intersection sight distance (SISD) is maintained.
2. In all cases safe intersection sight distances (SISD) must be met.
3. See New Zealand Transport Agency guidelines for planting for road safety for more details.
4. Intersections shall be designed in accordance with Austroads Guide to Engineering Practice Part 5 Section 5.



PLAN



LONGITUDINAL SECTION

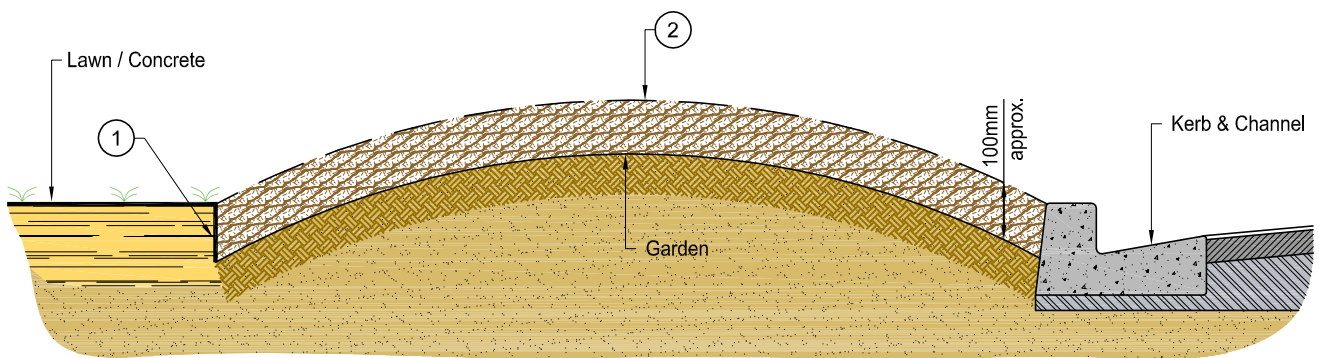
Speed Value (km/h)	Safe Intersection Sight Distance (SISD)	
	Rural	Urban
40	70	60
50	90	80
60	115	105
70	140	130
80	175	165
90	210	-
100	250	-
110	290	-
120	330	-

## SIGHT DISTANCES

## W205



EXAMPLE PHOTO



CROSS SECTION

- ① CORRECT : Edges to hold mulch without spillage.
- ② INCORRECT : Mulch is excessively mounded.

**STREET GARDEN**  
GARDEN EDGING

**W207**