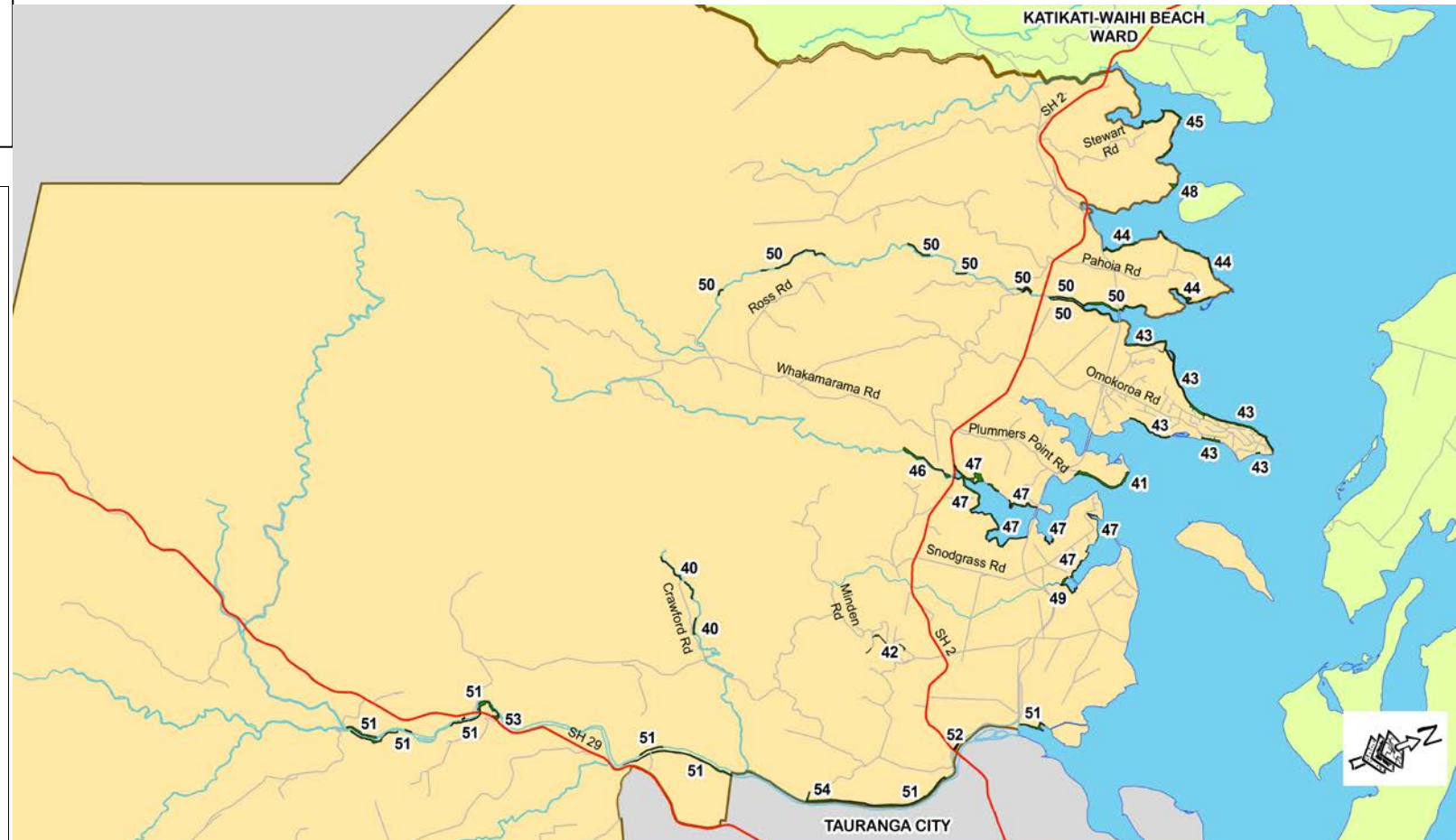


Walkway Reserves

**Kaimai Ward Reserves
Management Plan
Walkway Reserves
Location Map
Figure 2**

Key

- 40 Crawford Road LP Reserve
- 41 Kotuku Reserve to Huharua Harbour Park Walkway
- 42 Minden Walkway
- 43 Omokoroa Foreshore Reserves
- 44 Pahoia LP Reserves
- 45 Stewart Road LP Reserve
- 46 Te Puna Stream Walkway
- 47 Te Puna West to Plummers Point Walkway
- 48 Turner Road Landing Reserve
- 49 Waikaraka Drive Local Purpose Reserve and Stopped Road
- 50 Waipapa River Local Purpose and Recreation Reserve
- 51 Wairoa River Local Purpose and Recreation Reserves
- 52 Wairoa River (SH2), Te Puna Station Road Walkway
- 53 Wairoa River Reserves – Ruahihi Power Station
- 54 Wairoa River Reserves – Wairoa Road Rowing Club



6.40 Crawford Road LP Esplanade Reserve

Refer next page for map

Location	Crawford Road	Current Inventory	
Classification:	Local Purpose Esplanade		
District Plan Zone	Rural		
ID	37		
Area	3.1415 Ha		
Current State	Esplanade Reserve		
RMP	Ward RMP October 2008		
Concept Plan	Yes see below		
Overview	Walkway opportunity		

Background:

- Esplanade reserve on one side of Ohourere Stream, connecting to Crawford Road by the water intake.
- Currently utilised for fishing access.
- DoC Marginal Strip located adjacent to reserve.

Reserve Issues:

- Conservation management and protection of the riparian edge.
- Access for recreational fishing.
- Stock grazing.
- Potential for small strategic land purchase to create picnic ground and car park.
- A concept plan and design report, available from WBOP DC, was considered and deferred by the community.

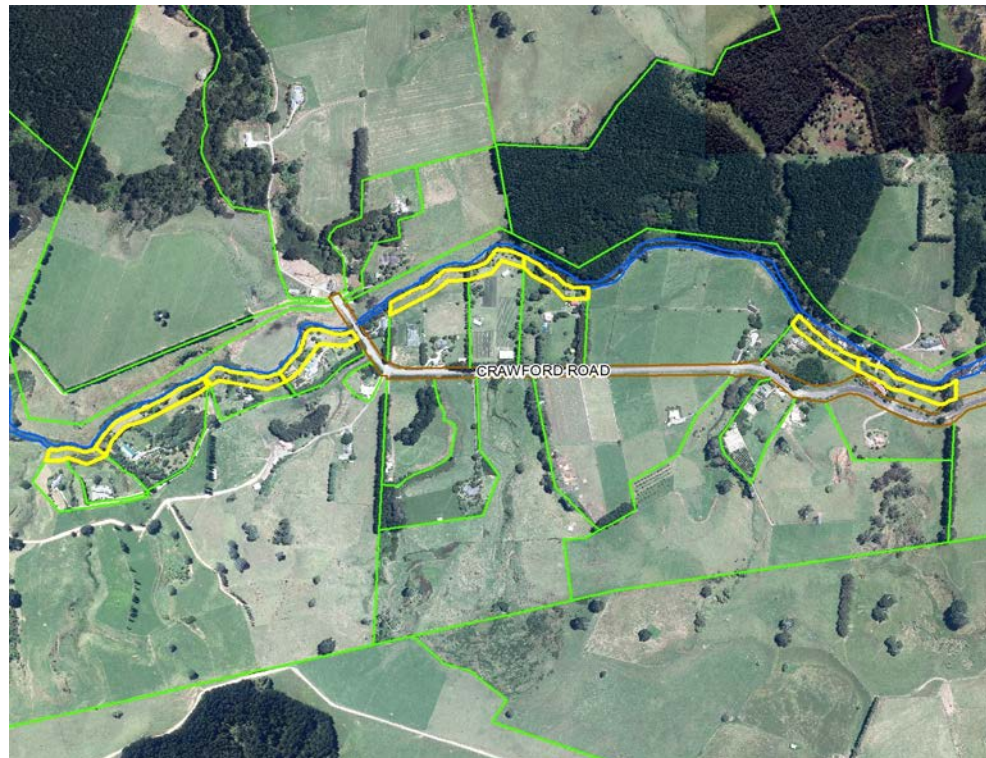
Reserve Management Policy:

- 6.40.1 Refine and implement concept plan when Council considers the implications of the Government's Walking Access in the NZ Outdoors Strategy.
- 6.40.2 Continue to secure remaining areas of esplanade reserve as detailed within the District Plan.

Reserve Management Policy: (Continued from previous page)

- 6.40.3 Investigate opportunities for land purchase to provide small car park and picnic area, adjacent to Crawford Road Bridge.
- 6.40.4 Refine and implement concept plan when Council considers the implications of the Government's Walking Access in the NZ Outdoors Strategy.
- 6.40.5 Continue to secure remaining areas of esplanade reserve as detailed within the District Plan.
- 6.40.6 Investigate opportunities for land purchase to provide small car park and picnic area, adjacent to Crawford Road Bridge.
- 6.40.7 Investigate reclassifying paper road, adjacent to Crawford Road Bridge, from Road Reserve to Local Purpose Reserve (Esplanade).
- 6.40.8 Generic objectives for Local Purpose Reserve and generic policies apply.

2015/25 LTP Approved Actions	Nil
-------------------------------------	-----



6.41 Kotuku Reserve to Huharua Park Walkway and cycleway

Location	Plummers Point Road	Current Inventory	
Classification:	Road		
District Plan Zone	Rural		
ID	NA		
Area	NA		
Current State	Mown road verge		
RMP	Ward RMP October 2008		
Concept Plan	No		
Overview	Popular walking and picnic area.		

Background:

- Currently road reserve.
- Part of walkway linkage from Kotuku Reserve, Huharua Park and the Estuary.
- No direct access to the harbour edge but a popular area for walking and cycling.

Reserve Issues:

- Lack of signage.
- Fragile eroding harbour edge.
- Conservation management and protection of riparian edge.

2015/25 LTP Approved Actions Adopted 30 June 2009	Nil
--	-----



**Omokoroa to Tauranga
City**



Reserve Management Policy:

- 6.41.1 Continue to maintain the mown grass areas and enhance the coastal riparian margins through native planting.
- 6.41.2 Implement Concept Plan.
- 6.41.3 The proposed Tauranga Moana Cycle Trail focuses on priority trails from Waihi to Waihi Beach, Omokoroa to Tauranga and along Tauranga Eastern Link to connect with Maketu, Paengaroa, Te Puke and Pukehina. The routes will utilise existing public land i.e. reserves, road, railway land and bridges.
- 6.41.4 Investigate reclassifying road as Local Purpose reserve.
- 6.41.5 Generic objectives for Local Purpose Reserves and generic policies apply.

6.42 Minden Walkway – Recreation and L P Utility and Access way Reserves and Road



Classification:	Recreation and Local Purpose Utility and Access way Reserves and Road		
Location	Minden	Current Inventory	
District Plan Zone	Rural	Bridge Walkway 2 Picnic tables	Basic Basic
ID	13, 15, 173		
Area	0.6543 Ha		
Current State	Native bush, open space		
RMP	Ward RMP October 2008		
Concept Plan	No		
Overview	Link walk ways between Minden Scenic Reserve, Dawn View Place Recreation Reserve and Ainsworth paper road and walkway link between Ainsworth Rd and Perkins Drive		
Grass Mowing Standard	Dawn View Place Site (0.25 Ha) Type D – Does not exceed 90 mm grass height. Mowed to within 45 mm of the ground. Ainsworth Road Site (0.51 Ha) Type E – Should not exceed 400mm grass height. Typically 1-5 cuts per year with flail or slasher type mower.		

Background:

- Series of reserve areas set aside during subdivision.
- Reserves provide connection between the roading network.
- Residential community use walkway links for exercise.
- Walkways highly scenic with expansive views.

Reserve Issues:

- Access between walkways limited to connections from roading network.
- Parking on road, road reserve and formed grassed areas within reserve.
- Improving walkway networks and connections to reserve areas eg. Minden Scenic Reserve and Te Puna Quarry Park.

Continued next page)

(From previous page)

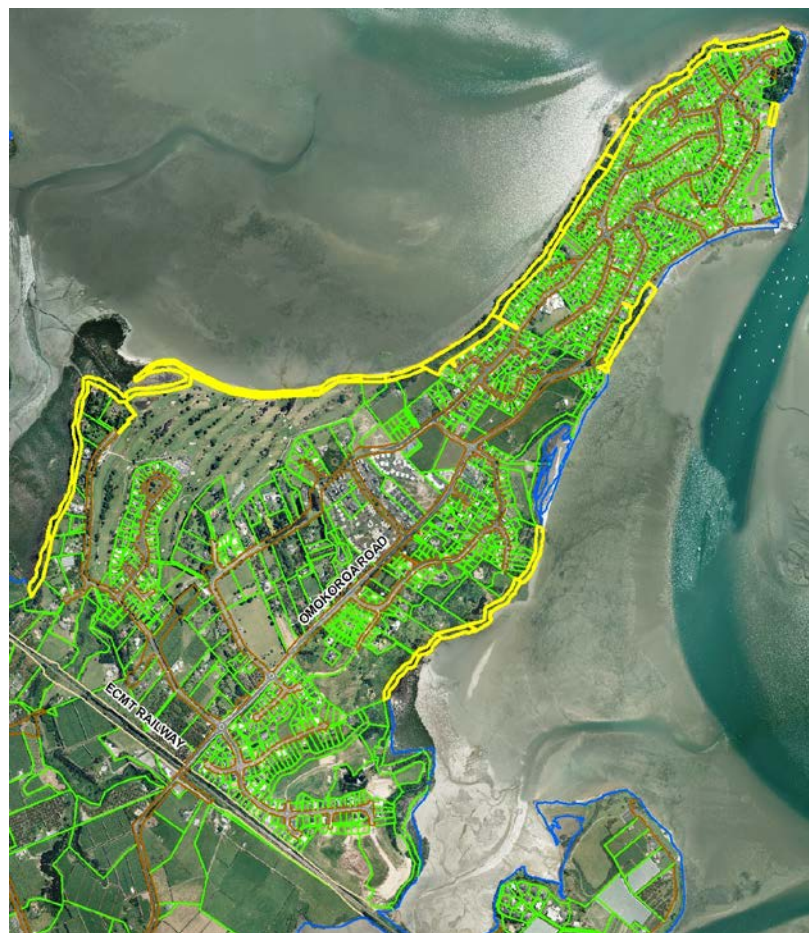
Reserve Management Policy:

- 6.42.1 Provide signage adjacent to roadways to improve awareness of walkways.
- 6.42.2 Investigate providing limited facilities including car parks, toilet and rubbish bins within selected reserves to facilitate use.
- 6.42.3 Continue to acquire land to complete walkway connections around Te Puna/Minden.
- 6.42.4 Development of walkway linkages will need to consider Minden Structure Plan outcomes.
- 6.42.5 Investigate opportunities to establish a pedestrian linkage between the Minden Road and Te Puna Quarry Park.
- 6.42.6 Prepare a concept plan with a demand and cost analysis for all walkways and potential cycle ways including;
 - The need and location of a toilet;
 - Installation of appropriate signage and trail maps which includes sacred sites;
 - Acknowledgement of Tangata Whenua heritage sites.
- 6.42.7 Generic objectives for Scenic, Recreation and Local Purpose Reserves and generic policies apply.

2015/25 LTP Approved Actions	Action Cost Estimate	Special Funding Arrangement	Preferred Timing	Project No
Minden - Te Puna Neighbourhood Park	100,000		2019/20	260409



6.43 Omokoroa Foreshore Reserves



Classification:	Local Purpose Foreshore, Esplanade, Access and Recreation Reserve		
Location	Omokoroa	Current Inventory	
District Plan Zone	Residential and Rural	Picnic tables	Medium
ID	104, 367, 382, 389, 391, 392, 393, 394.	Seating	
Area	16.0649 Ha	Walkway	
Current State	Harbour Walkway	Weather shelter – property 391	
RMP	Ward RMP October 2008	Harbour access	
Concept Plan	No		
Overview	Walkway extension / renewal and acquire links		

Background:

- Lease Agreement with Western Bay Golf Club (walkway lease agreement).
- Discontinuous esplanade reserves around the Omokoroa Peninsula foreshore.
- A series of vehicular access points connect to some parts of the esplanade e.g. Walnut Grove Reserve, Gerald Crapp Reserve, Cooney Reserve, Hamurana Reserve, Precious Family Reserve, Omokoroa Domain and Tinopai Reserve.
- From Beach Grove (Omokoroa Foreshore Reserves) access to foreshore reserve is gained over Marginal Strip owned by Department of Conservation.
- Popular well used community walkways.
- Residential development abuts reserve in some areas.
- Coastal erosion has affected some areas of the reserves.
- Omokoroa Environmental Managers care group operates in the Omokoroa estuaries protecting the harbour values through mangrove management and wading bird habitat restoration.

Reserve Issues:

- Coastal erosion.
- Weed control.
- Pedestrian access to and around the harbour.
- Preservation of natural character and protection of wildlife, wetlands and associated values.
- Formalisation of informal public access. (Continued next page).

(From previous page)

Reserve Issues:

- Likely population growth and increasing demand for recreation.
- Lack of signage.
- Encroachment and boundary definition/ fencing.
- Garden waste disposal over bank.

Reserve Management Policy:

- 6.43.1 Continue to secure remaining areas of esplanade reserve around the Omokoroa Peninsula (as identified in the District Plan) to achieve continuous pedestrian access and harbour protection.
- 6.43.2 Where existing access over private land facilitates the coastal walkway connection seek to secure some form of legal formalisation of this access.
- 6.43.3 The proposed Tauranga Moana Cycle Trail focuses on priority trails from Waihi to Waihi Beach, Omokoroa to Tauranga and along Tauranga Eastern Link to connect with Maketu, Paengaroa, Te Puke and Pukehina. The routes will utilise existing public land i.e. reserves, road, railway land and bridges.
- 6.43.4 Dog Control Bylaw 2011 (**Being Reviewed 2016**) prohibits dogs on Omokoroa Esplanade and the foreshore adjoining the golf course (Refer to Bylaw details in Appendices for details).
- 6.43.5 Close private pathways across the esplanade reserve where these constitute a hazard or risk to the environment.
- 6.43.6 Manage and control encroachment into reserve land (refer to Generic Policy P13 Encroachment).
- 6.43.7 Where public recreation, amenity and natural character values are not adversely affected provide for community enhancement and maintenance of reserve land.
- 6.43.8 Provide facilities including car parks, toilets and rubbish bins in adjacent reserves.
- 6.43.9 Consistent with the protection of conservation values and erosion protection / safety provide for continuous pedestrian linkage around the Omokoroa Peninsula.
- 6.43.10 Freedom Camping is prohibited in the reserve including any associated roads/car parks. (Refer to Bylaw).
- 6.43.11 Manage the coastal esplanade for the protection of the natural character and wildlife values of the Tauranga Harbour.
- 6.43.12 Generic objectives for Local Purpose and Recreation Reserves and generic policies apply.

2015/25 LTP Approved Actions	Nil
-------------------------------------	-----





6.44 Pahoia Local Purpose Foreshore and Esplanade Reserves



Location	Pahoia Foreshore	Current Inventory	
Classification:	LP Foreshore and Esplanade		
ID	114, 84,		
District Plan Zone	Rural		
Area	6.4296 ha		
Current State	LP Esplanade and Foreshore		
RMP	Ward RMP October 2008		
Concept Plan	No		
Overview	Long term coastal walkway development around Pahoia Peninsula		

Background:

- Discontinuous esplanade reserves around the Pahoia Peninsula foreshore.
- Vehicular access to the foreshore reserve occurs only through Pahoia Domain.
- Foreshore reserves include sensitive coastal margins and wildlife areas.
- Pahoia Domain and Pahoia Landing Reserve forms part of the coastal walkway.
- Rural residential / lifestyle development abuts some of the coastal foreshore reserves.

Reserve Issues:

- Pedestrian access to and around the coast.
 - Encroachment and boundary definition/fencing.
 - Dumping of waste material and informal coastal protection works.
 - Formalisation of informal public access.
 - Preservation of natural character and protection of wildlife, wetlands and associated values.
- (Continued next page)

(From previous page)

Reserve Management Policy:

- 6.44.1 Continue to secure remaining areas of esplanade reserve around the Pahoia Peninsula (as identified in the District Plan) to achieve continuous pedestrian access and harbour protection.
- 6.44.2 Manage the coastal esplanade for the protection of the natural character and wildlife values of the Tauranga Harbour.
- 6.44.3 Where existing access over private land facilitates the coastal walkway connection seek to secure some form of legal formalisation of this access.
- 6.44.4 Manage and control encroachment onto reserve land, generic policy applies (refer P13 Encroachment).
- 6.44.5 Generic objectives for Local Purpose and Landing Reserves and generic policies apply.

2015/25 LTP Approved Actions	Nil
-------------------------------------	-----

6.45 Stewart Road LP Reserve



Location	Stewart Road, Off SH@, Katikati South	Current Inventory	
Classification	Local Purpose Reserve (Foreshore)		
District Plan Zone	Rural		
ID	79		
Area	3.6970 Ha		
Current State	Esplanade		
RMP	Ward RMP October 2008		
Concept Plan	No		
Overview	Harbour walkway opportunity		

Background:

- Discontinuous foreshore reserve located around the Turner Road Peninsula.
- Land locked and inaccessible.

Reserve Issues:

- Preservation of natural character and protection of wildlife, coastal foreshore and associated values.
- Formalisation of informal public access.
- Encroachment and boundary definition.
- Known pa site located within esplanade reserve.

Reserve Management Policy:

- 6.45.1 Give appropriate recognition to pa site within future walkway development.
- 6.45.2 Continue to secure remaining areas of esplanade reserve around the Turner Road Peninsula (as identified in the District Plan) to achieve continuous pedestrian access and harbour protection.
- 6.45.3 Provide pedestrian connection to Turner Road Landing Reserve.
- 6.45.4 Generic objectives for Local Purpose Reserves and generic policies apply

2015/25 LTP Approved Actions	Nil
-------------------------------------	-----

6.46 Te Puna Stream Walkway

Location	SH 2 Te Puna	Current Inventory	
Classification	Local Purpose Reserve (Esplanade)		
District Plan Zone	Rural		
ID	210		
Area	4.7700 Ha		
Current State	Esplanade reserve		
RMP	Ward RMP October 2008		
Concept Plan	No		
Overview	Proposed project – long term river walkway opportunity		

Background:

- Discontinuous esplanade reserve along stream edge.

Reserve Issues:

- Preservation of natural character and protection of wildlife, river margins and associated values.
- Formalisation of informal public access.
- Encroachment and boundary definition.
- Opportunity to extend walkways over rebuilt rail bridges.

Reserve Management Policy:

- 6.46.1 Continue to secure remaining areas of esplanade reserve along the Te Puna Stream (as identified in the District Plan) to achieve continuous pedestrian access.
- 6.46.2 Manage to enhance riparian values.
- 6.46.3 Generic objectives for Local Purpose Reserves and generic policies apply.

2015/25 LTP Approved Actions	Nil
-------------------------------------	-----



6.47 Te Puna West to Plummers Point Walkway



Location	Plummers Point, Te Puna West	Current Inventory	
Classification:	Landing Reserve and Local Purpose Reserve (Esplanade and Foreshore)		
District Plan Zone	Rural		
ID	14, 41, 102, 243		
Area	18.6550 Ha		
RMP	Ward RMP October 2008		
Concept Plan	No		
Current State	Esplanade reserve. Landing reserve reclaimed land		
Overview	Staged development of harbour walkway and cycle way from Kotuku Reserve, Plummers Point to Te Kopa O Te Hotu Reserve, Te Puna West		

Background:

- Discontinuous walkway.
- Primary values relate to the preservation of the natural character of the Tauranga Harbour environment.
- Limited practical pedestrian access from public roads.
- A care group operates in the estuary protecting the harbour values through mangrove management and managing the Jess Rd wetland restoration.
- Pukemanuka Pa is located on LP Reserves Lots 3 and 4 DPS 64672 and Lot 3 DPS 55786.

Reserve Issues:

- Inaccessibility and encroachment.
- Opportunity for continuous pedestrian and cycle way connection from Kotuku Reserve to Te Kopa O Te Hotu Reserve.
- Opportunity to extend walkways over rebuilt rail bridges. (Continued next page)

(From previous page)
Reserve Management Policy:

- 6.47.1 Continue to secure remaining areas of foreshore and esplanade reserve around the Plummers Point and Te Puna Peninsulas (as identified in the District Plan) to achieve continuous access.
- 6.47.2 Investigate consent requirements for development of access along harbour's edge.
- 6.47.3 The proposed Tauranga Moana Cycle Trail focuses on priority trails from Waihi to Waihi Beach, Omokoroa to Tauranga and along Tauranga Eastern Link to connect with Maketu, Paengaroa, Te Puke and Pukehina. The routes will utilise existing public land i.e. reserves, road, railway land and bridges.
- 6.47.4 Maintain for harbour protection and wildlife/botanical conservation purposes.
- 6.47.5 Generic objectives for Local Purpose Reserves and generic policies apply.

2015/25 LTP Approved Actions	Nil
------------------------------	-----



6.48 Turner Road Landing Reserve



Location	Turner Road, Apata	Current Inventory	
Classification:	Landing Reserve (Gaz 1902 pg 1909)		
District Plan Zone	Rural		
ID	251		
Area	0.8093 Ha		
Current State	Landing Reserve.		
RMP	Ward RMP October 2008		
Concept Plan	No		
Overview	Define boundaries and form road access		

Background:

- Located at end of paper road which can be signposted subject to public demand and usage.
- Adjacent to known pa site.
- Currently grazed and forms part of coastal edge.
- Vegetation includes Manuka, Eucalypt and Macrocarpa.

Reserve Issues:

- Preservation of natural character and protection of wildlife and coastal values.

Reserve Management Policy:

- 6.48.1 Provide pedestrian access to reserve via Stewart Road Local Purpose Reserve or via paper road.
- 6.48.2 Manage landing and adjoining Local Purpose reserves together.
- 6.48.3 Protect harbour margins from grazing.
- 6.48.4 Generic policies apply.

2015/25 LTP Approved Actions	Nil
-------------------------------------	-----

6.49 Waikaraka Drive Local Purpose Reserve and Stopped Road

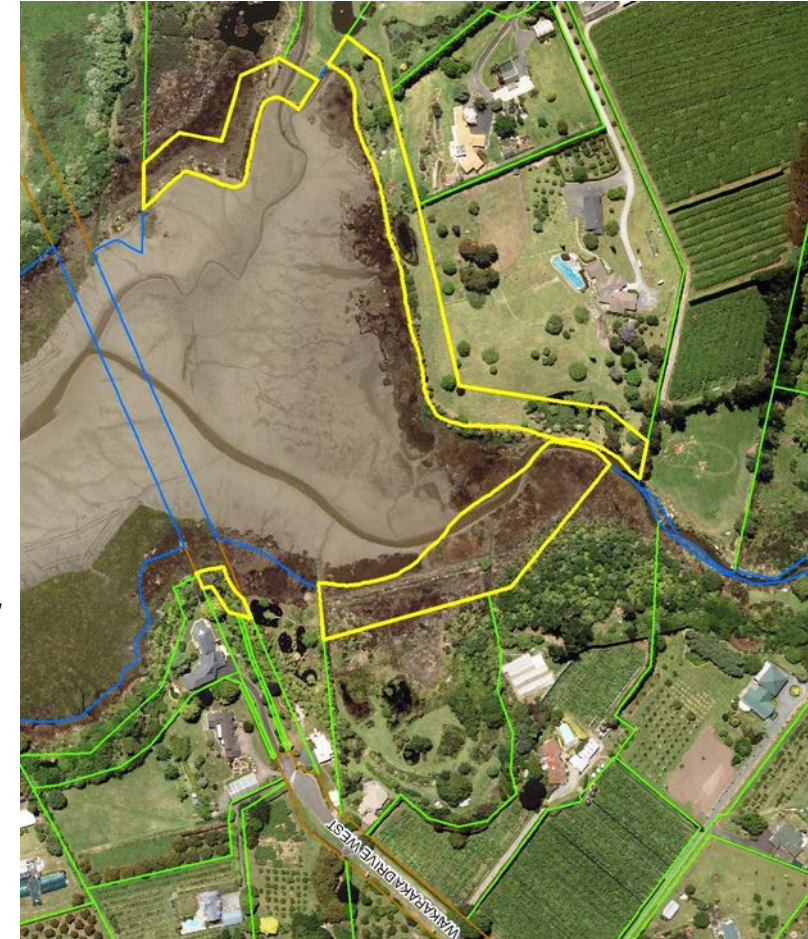
Location	Waikaraka Estuary	Current Inventory	
Classification:	Local Purpose Reserve (Foreshore and Esplanade) and Stopped Road		
District Plan zone	Rural		
ID	179		
Area	2.8003 Ha		
Current State	Coastal Esplanade		
RMP	Ward RMP October 2008		
Concept Plan	No		
Overview	Harbour walkway opportunity, Te Puna		

Background:

- Small area of esplanade reserve on edge of Waikaraka Estuary, Tauranga Harbour.
- Adjoins estuarine environment with significant cover of mangrove vegetation.
- A care group operates in the estuary protecting the harbour values through mangrove management, wading bird habitat restoration, plantings and rubbish removal.

Reserve Issues:

- Opportunity to acquire esplanades to connect Te Kopa O Te Hotu Reserve with Waikaraka Drive East.
- Natural character and wildlife values.



Reserve Management Policy:

- 6.49.1 Maintain for harbour protection and wildlife/botanical conservation purposes.
- 6.49.2 Investigate and construct estuary walkways.
- 6.49.3 Control encroachment and ensure no grazing of coastal margins occurs across esplanade.
- 6.49.4 Undertake control of environmental weeds; where appropriate undertake native riparian planting.
- 6.49.5 Long term development of walkway from Plummers Point to Te Puna Foreshore Reserve consistent with conservation values.
- 6.49.6 Generic objectives for Local Purpose Reserves and generic policies apply.

2015/25 LTP Approved Actions	Action Cost Estimate	Special Funding Arrangement	Preferred Timing	Project No
Walkway – Resource consent and construction Reserve	55,000		2019/20	322301

6.50 Waipapa River Local Purpose and Recreation Reserve



Location	Waipapa SH2	Current Inventory	
Classification:	Local Purpose Esplanade and Foreshore and Recreation Reserves		
District Plan Zone	Rural		
ID	73.121		
Area	16.1899 Ha		
Current State	Esplanade and estuary		
RMP	Ward RMP October 2008		
Overview	Walkway opportunity		

Background:

- Located along Waipapa River and within Aongatete State Forest.
- Discontinuous esplanade reserve along river and estuary margins.
- Abuts SH2 and connects to Prole Road.
- Primary values relate to the preservation of natural character and wildlife values of the river and harbour environment.
- Opportunity to extend walkways over rebuilt rail bridges.

Reserve Issues:

- Inaccessibility.
- Encroachment / grazing.
- Opportunity to provide walkway from SH2 to harbour's edge through to Waitui Reserve, Te Puna West.

Reserve Management Policy:

- 6.50.1 Continue to secure remaining areas of esplanade reserve along Waipapa River and around the Waipapa Estuary (as identified in the District Plan) to achieve continuous pedestrian access.
- 6.50.2 Manage the coastal and riparian esplanade for the protection of the natural character and wildlife values of the Waipapa River and Tauranga Harbour.
- 6.50.3 Provide vehicle access points to esplanade and foreshore reserves.
- 6.50.4 Generic objectives for Local Purpose and Recreation Reserves and generic policies apply.

2015/25 LTP Approved Actions	Nil
-------------------------------------	-----

6.51 Wairoa River Local Purpose and Recreation Reserves

Classification:	LP Esplanade and Foreshore Reserves and Recreation Reserves	
Location	Wairoa River, SH 29	Current Inventory
District Plan Zone	Rural	
I.D.	134, 159	
Area	18.8513 ha	
Current State	Esplanade along the Wairoa River	
RMP	Ward RMP October 2008	
Concept Plan	Wairoa River Valley Strategy	
Overview	Esplanade access to the Wairoa River	

Background:

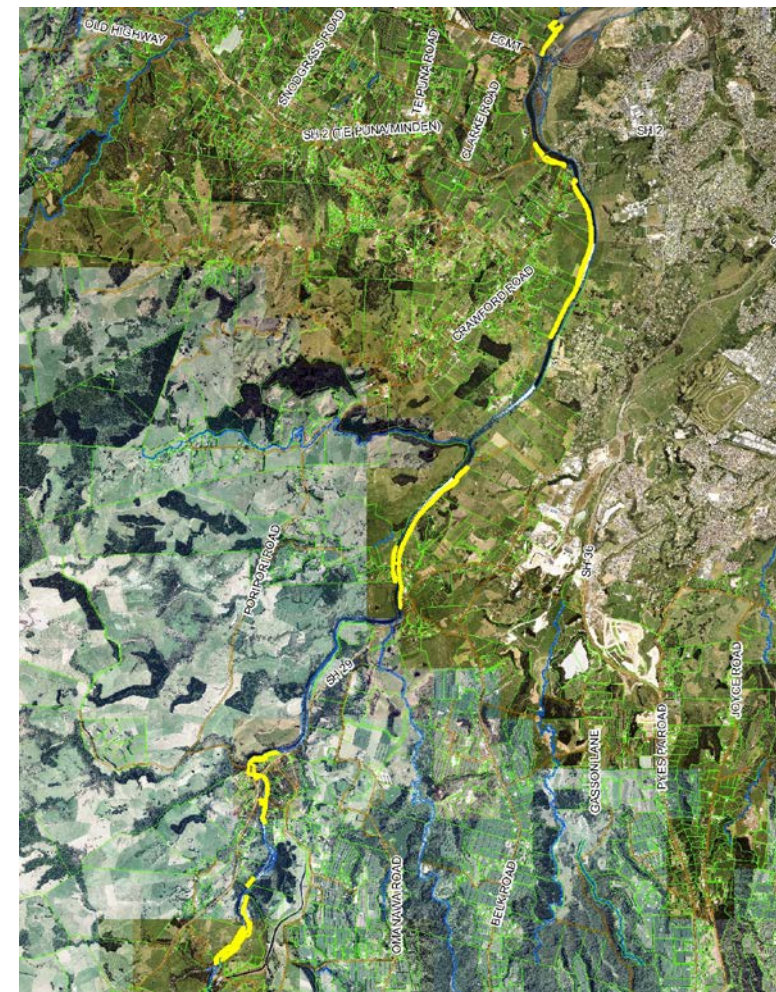
- ❑ The Wairoa River Valley Strategy was completed in November 2005 and reviewed 2013.
- ❑ Discontinuous esplanade reserve along the Wairoa River including DOC Marginal strips and TCC Land.
- ❑ Vehicle access points to the Wairoa River and esplanade include; Wairoa Reserve (SH2), Poripori Rd Picnic Area, McLaren Falls, Wairoa Road (Rowing Club), Redwood Lane and Miles Lane (TCC).
- ❑ Walkway potential extends from McLaren Falls to Tauranga Harbour.

Reserve Issues:

- ❑ Encroachment – grazing and boundary definition.
- ❑ Preservation of natural character and protection of wildlife and riparian edges and associated values.
- ❑ Potential future opportunity to provide a walkway linkage from McLaren Falls Park on the true right (eastern side) to the Wairoa Bridge.
- ❑ Opportunity to develop adjoining T C C and DOC owned land for recreational purposes as below.

Owner	Description	Area (Hectares)
Crown Land	SO 13702	8.8485
Crown Land	SO 23920	2.5222
Tauranga City Council	Pt Lot 3 DP 6633	.1163
Tauranga City Council	Allot 710 SO 43514	.1126

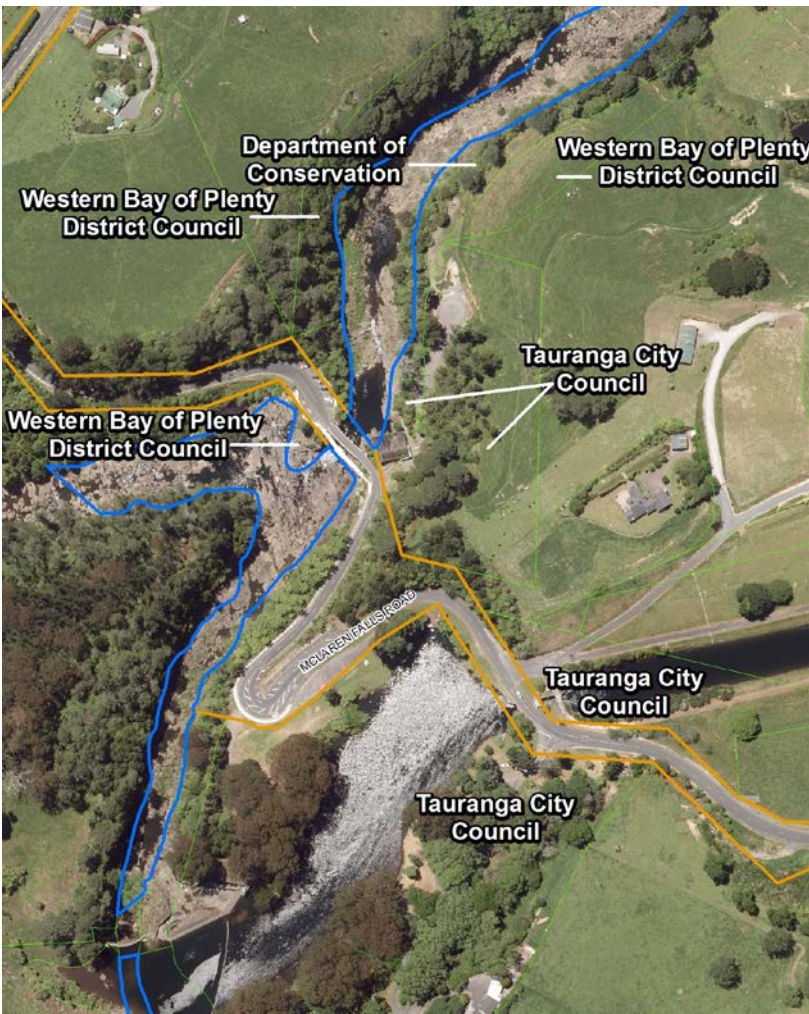
(Continued next page)



(From previous page)

Reserve Management Policy:

- 6.51.1 Continue to secure remaining areas of esplanade reserve along the Wairoa River (as identified in the District Plan and Feasibility Study) to achieve continuous pedestrian and potential cycle way access and riparian margin protection.
- 6.51.2 Continue to maintain management of the McLarens Falls road bridge area with Tauranga City Council.
- 6.51.3 The McLarens Falls pedestrian bridge crossing the Wairoa river alongside the road bridge is a very popular but dangerous jumping platform.
- 6.51.4 Manage the reserves for the protection of riparian and wildlife and natural character values.
- 6.51.5 Manage in conjunction with adjoining DOC Marginal Strips.
- 6.51.6 Investigate access options to enhance recreational opportunities e.g. raft and kayak access, rowing, fishing, swimming and acknowledge that ramps, jetties, pontoons, walkways, cycle ways and other structures are able to be constructed to facilitate recreational access to the river.
- 6.51.7 With the increased use of the Wairoa River environs, monitor the need to provide appropriate public amenities.
- 6.51.8 Investigate expanding a walkway and potential cycle way link to the harbour along the true left bank.
- 6.51.9 Implement recommendations from Crime Prevention Through Environmental Design Assessment.
- 6.51.10 Implement recommendations with Tauranga City Council from the Wairoa River Valley Strategy.
- 6.51.11 Generic objectives for Local Purpose and Recreation Reserves and generic policies apply.



2015/25 LTP Approved Actions	Nil
-------------------------------------	-----

6.52 Wairoa River [SH2], Te Puna Station Road Walkway

Classification:	LP Esplanade and Road Reserve		
Location	Te Puna Station Road, SH 2	Current Inventory	
District Plan Zone	Rural	Boat ramp	Medium
ID	62, 385	Car park	Medium, 3 basic
Area	2.1260 Ha	Footpath	Medium
RMP	Ward RMP October 2008	Toilet	Medium
Concept Plan	Concept Plan assessed and actions completed.	4 Picnic tables	
Current State	Road reserve, esplanade, boat launching & picnic area.		
Overview	Reform the road and develop as a picnic/boat launching area. Road reserve has significant recreation and historic values. Boat ramp has deteriorated. Proposed river walkway to Ruahihi Power Station, including Ohourere Stream		
Grass Mowing Standard	Prop 62 (1.29 Ha) Type D – Does not exceed 90 mm grass height. Mowed to within 45 mm of the ground. Prop 385 (0.65 Ha) Type E – Should not exceed 200 mm grass height. Typically 8-12 cuts per year.		
Toilet Cleaning	Every 2 days, summer daily.		



Background:

- Series of reserve areas extending up and downstream of SH2 bridge, along the Wairoa River.
- Road Reserve maintained as open space.
- The Wairoa River Valley Strategy was completed in November 2005 and reviewed 2013.
- Supports a boat ramp for water access, toilet block, picnic tables and seating.
- Additional informal boat ramp located adjacent to rail bridge.
- Popular picnic area and Motor home stopping point.

(Continued next page)

(From previous page)

Background: (Continued)

- Alternative safe route for traffic between Wairoa Road and Te Puna Station Road (avoiding SH2 intersection).
- Popular fishing location (southern end), at corner of Wairoa Road.
- River forms the boundary with Tauranga City Council.

Reserve Issues:

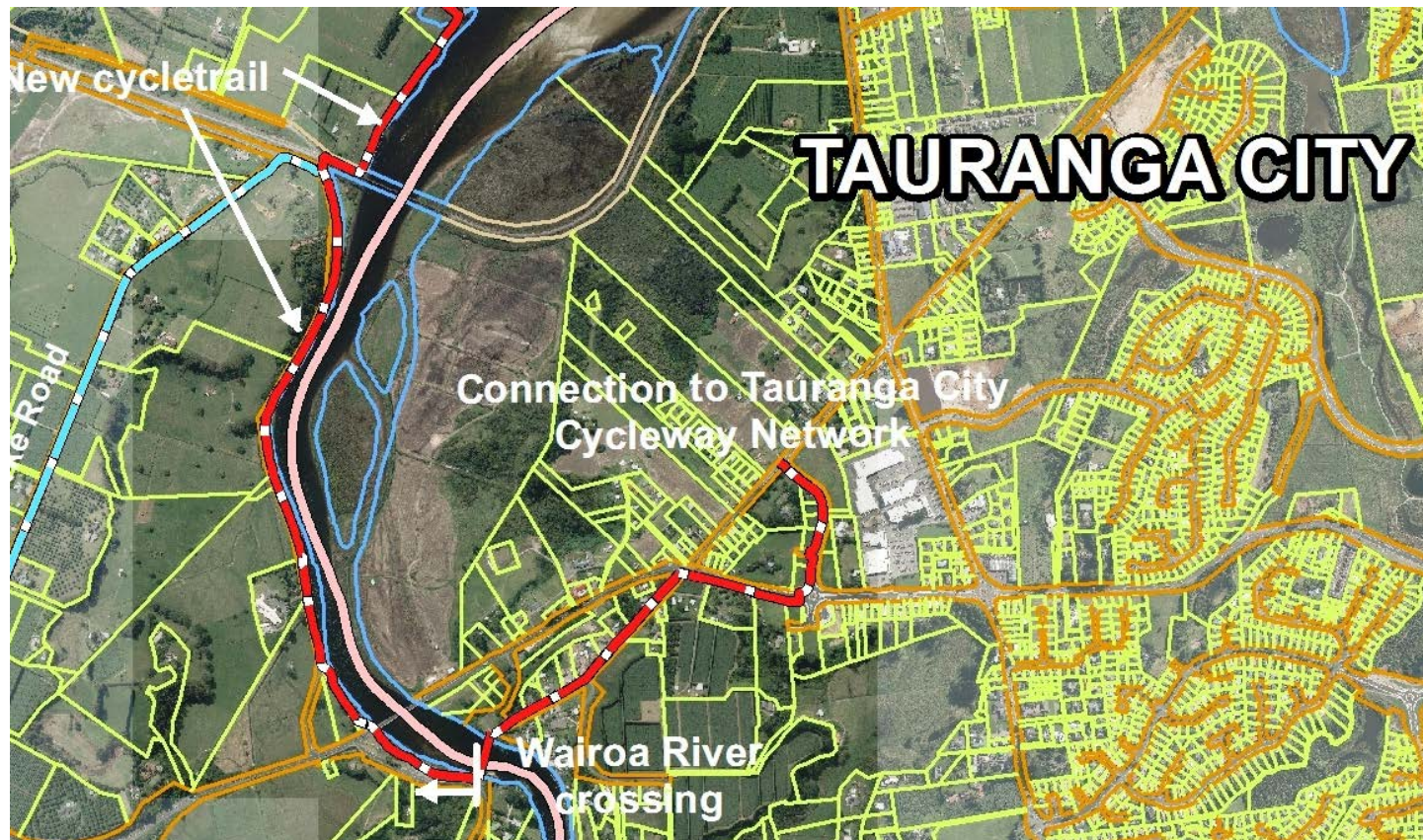
- Traffic management (through vehicles).
- River access.
- Conservation and riparian / ecological values.
- Discontinuous walkway along the Wairoa River edge.
- Enhancement of useable open space.
- Significance of the Wairoa River to Maori.
- Te Puna Station Road area was once part of the Pukewhanake Pa a waahi tapu site.
- Renaming of reserve to reflect adjacent pa site.

Reserve Management Policy:

- 6.52.1 Refine and implement concept plan.
- 6.52.2 Continue to secure remaining areas of esplanade reserve along the Wairoa River (as identified in the District Plan).
- 6.52.3 The proposed Tauranga Moana Cycle Trail focuses on priority trails from Waihi to Waihi Beach, Omokoroa to Tauranga and along Tauranga Eastern Link to connect with Maketu, Paengaroa, Te Puke and Pukehina. The routes will utilise existing public land i.e. reserves, road, railway land and bridges.
- 6.52.4 Retain boat access above SH2 bridge.
- 6.52.5 Plant river edge with appropriate native riparian species.
- 6.52.6 Board walk over river edge if required for cycleway.
- 6.52.7 Manage the river edge for the protection of the natural character and wildlife values of the Wairoa River.
- 6.52.8 Reclassify Road Reserve to Local Purpose Esplanade reserve.
- 6.52.9 Investigate continuation of walkway northward up the Tauranga Harbour.
- 6.52.10 Freedom camping is permitted within the area immediately south of the railway bridge subject to Bylaw restrictions. (Refer to Appendices and Maps in Bylaw)
- 6.52.11 Freedom Camping is prohibited in the reserve immediately north of the Wairoa River bridge. (Refer to Bylaw).

- 6.52.12 Generic objectives for Local Purpose and Landing Reserves and generic policies apply.
- 6.52.13 Work with Tauranga District Council on the development of the Wairoa River Valley Strategy.

2015/25 LTP Approved Actions	Action Cost Estimate	Special Funding Arrangement	Preferred Timing	Project No
Harbour Access Investigation and construction	94,000		2017/18	294801
Car park upgrade	31,000		2017/18	294802





6.53 Wairoa River Reserves – Ruahihi Power Station Reserve

Location	State Highway 29.	Current Inventory	
Classification	Local Purpose (Esplanade) Reserve.	Car park	Basic
District Plan Zone	Rural.		
ID			
Area	.5771 ha.		
Current State	Grassed area used for informal parking.		
RMP	Kaimai Ward RMP 2016.		
Concept Plan	Prepare concept plan and access assessment.		
Overview	Subject to limited access. Upgrade car park and develop entranceway.		
Grass Mowing Standard	(ha) Type D – Does not exceed 90 mm grass height. Mowed to within 45 mm of the ground.		

Background:

- The Wairoa River Valley Strategy was completed in November 2005 and reviewed 2013.
- See Wairoa River Local Purpose and Recreation Reserves (Walkways).
- Informal car park.

Reserve Issues:

- Subject to limited access and use under Sec 221 RMA 1991.
- Parking and traffic safety and vehicle access to river's edge.
- There are safety issues due to the changing water levels from the power station controls.
- Vegetation management and weed control.

Reserve Management Policy:

- 6.53.1 Prepare a Concept Plan including an assessment to develop access off State Highway to the river and an all-weather vehicle parking area.
- 6.53.2 Investigate changing designation of Local Purpose Reserve (Esplanade) to Recreation Reserve
- 6.53.3 Provide improved signage.
- 6.53.4 Maintain existing access from road to river's edge.
- 6.53.5 Continue to maintain the mown grass areas and enhance the riparian margins through native planting.
- 6.53.6 Control environmental weeds.
- 6.53.7 Generic policies apply.

2015/25 LTP Approved Actions	Nil
-------------------------------------	-----

6.54 Wairoa River Reserves – Wairoa Road Rowing Club.

Location	Wairoa Road.	Current Inventory	
Classification	Road Reserve.	Car park	Basic
District Plan Zone	Rural.		
ID	NA		
Area	NA		
Current State	Wairoa River access and parking.		
RMP	Kaimai Ward RMP 2016.		
Concept Plan	Prepare concept plan.		
Overview	Upgrade car parking for river access.		
Grass Mowing Standard	Nil		

Background:

- The Wairoa River Valley Strategy was completed in November 2005 and reviewed 2013.
- See Wairoa River Local Purpose and Recreation Reserves (Walkways).
- Informal car parking for river users including BOP Coast Rowing Club.

Reserve Issues:

- Formed access to rowing club facility within road reserve.
- Parking and traffic safety to river's edge.
- Vegetation management and weed control.



Reserve Management Policy:



- 6.54.1 Develop a Concept Plan.
- 6.54.2 With the increased use of the Wairoa River environs, assess the need to provide appropriate public amenities.
- 6.54.3 Investigate changing designation of Road Reserve to Local Purpose Reserve (Esplanade).
- 6.54.4 Provide improved signage.
- 6.54.5 Maintain existing access to Wairoa River.
- 6.54.6 Control environmental weeds.
- 6.54.7 Generic policies apply.