

# COMMUNITY BUILDING

---



# COMMUNITY BUILDING

---

## OVERVIEW

Working with our communities and local organisations we achieve healthy, safe, vibrant and diverse communities. Our Community Development Team is fundamental to achieving this outcome.

By supporting the establishment of local community groups, for example neighbourhood support groups, environmental care groups and community patrols, we can help communities to help themselves. Supporting the involvement of people in communities produces leaders for the future.

We provide grant funding to a number of local organisations. Highlights in the 2014/15 year included \$10,000 to support the on-going work of Tauranga Moana Safe City and just under \$5,000 for the Te Puke Youth Development Network.

We have made some changes to the way we distribute grants. From 2015 we will consolidate the discretionary grants fund, the community landscaping fund and the community planning fund into a single pool of \$60,000. This will be allocated evenly between the three wards, with \$20,000 available in Maketu-Te Puke, Kaimai and Katikati-Waihi Beach. Community organisations can apply for grants to use for environmental, cultural, social or recreational purposes.

We will also continue to review the value for money we receive from our service delivery contractors. Service delivery contracts we support currently that contribute to building strong communities include Surf Lifesaving New Zealand, Sport Bay of Plenty, Katikati Resource Centre and Creative Tauranga.

We recognise and acknowledge the value of community volunteers and the contribution they make to building strong resilient communities. Building the capability of local organisations to provide services to their community improves access to services for community members. In particular we develop the capability of those who govern community organisations and encourage the use of business strategies to help them identify sustainable funding sources so they are not solely reliant on the uncertainty of grant income.

This focus on building community capacity has also seen changes to how we undertake community development planning. Whereas in the past community development planning was led by Council, this is now in the hands of communities themselves, with Council in a supporting role providing funding and facilitation assistance.

We work with a wide range of agencies so our District can benefit from the resources, services and funding provided by central government agencies and regional organisations. For example, we work with the New Zealand Police, Ministry of Social Development and Tauranga Moana Safe City to achieve a safe place to 'live, work and play'.

Like most Districts there are areas of poverty. Council will investigate whether the way in which it provides services and distributes its facilities should take into account levels of deprivation and prosperity across the District. For example, should areas of high deprivation have more parks, recognising that residents are less like to have transport to access parks that are not within walking distance.

The role and impact of urban design and the quality of our built environment contribute to community identity and the overall safety of our town centres and residential areas. Equally important is the need to preserve our links with the past.

We encourage development that is guided by our Residential Development Guidelines and help preserve the richness of our cultural heritage through policies and rules in our District Plan, which is guided by the SmartGrowth Strategy and the sub-regional Cultural Heritage Strategy.

Public art can also be an effective way to reflect the history and identity of an area, for example the murals in Katikati, and often provides economic benefits to a community. Recently Council has been supporting young people to paint murals on Council facilities that are regularly graffitied (e.g. toilets). The murals not only reflect the history and contribute to the vibrancy of the area it has been an excellent deterrent to vandalism. The importance of the arts to communities is reflected in the SmartArts sub-regional strategy and our own Public Art Policy, which identifies our role and approach to the provision of public art.

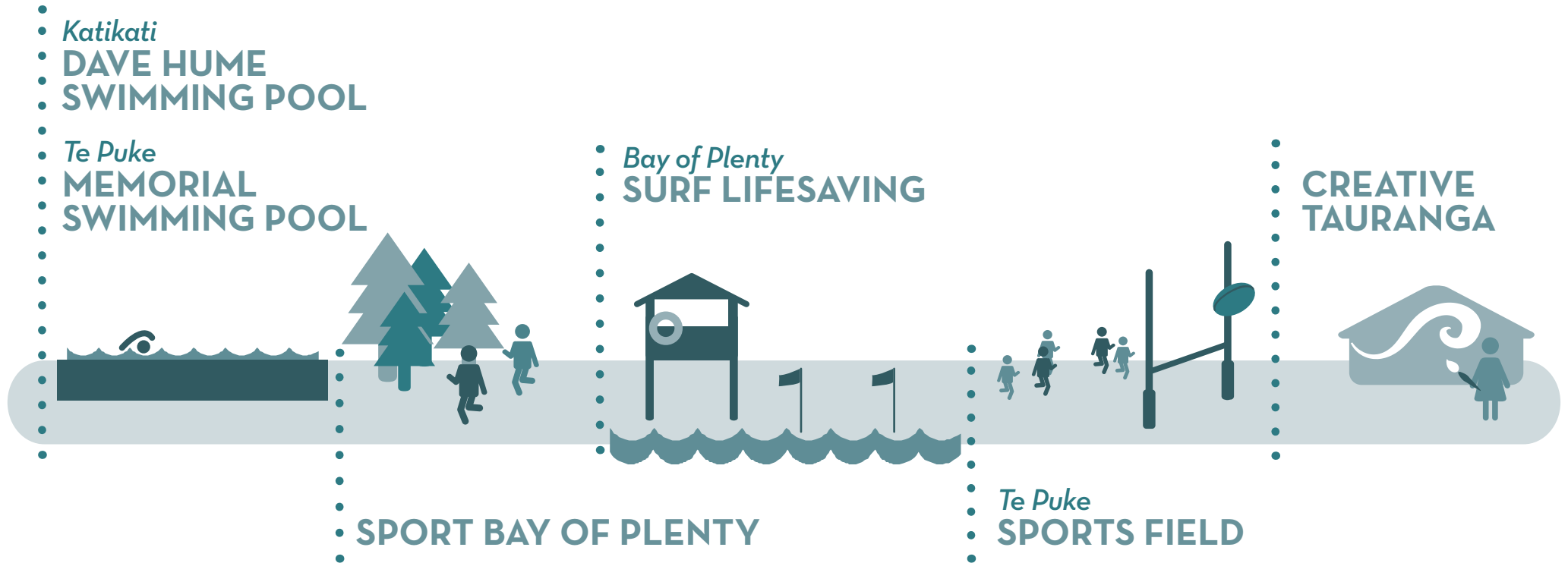
Similarly the sub-regional Events Strategy recognises that local community events contribute to community pride and provide opportunities for local people to come together, which can also bring economic benefits.

We recognise the importance of having meaningful and purposeful relationships with Tangata Whenua and focus on building the capability of local hapu and iwi to achieve their aspirations. This includes providing assistance to Tangata Whenua in the development of hapu and iwi management plans, supporting opportunities for the development of papakainga and more recently the establishment of a fund to contribute to the maintenance of marae across the District. Internally there is a focus on building our capability and capacity to work effectively with Tangata Whenua.

Our communities are constantly changing and our community building activities need to respond to these changes. Key drivers for our community building activities during the period of this Long Term Plan will be our ageing population, the importance of retaining and engaging our young people and the growing ethnic diversity of our communities.

## WHAT WE PROVIDE

### SERVICE DELIVERY CONTRACTS



## WHY WE PROVIDE IT

### OUR COMMUNITY OUTCOME

Social infrastructure (the community facilities, services and networks that help individuals, families, groups and communities) meets the diverse needs of communities; communities are strong and can influence their futures.

### OUR GOALS

- Communities are healthy and safe.
- Communities are vibrant and diverse.
- Communities participate in the development of their futures.

## HOW WE WILL ACHIEVE OUR COMMUNITY OUTCOME

GOAL	OUR APPROACH	OUR ROLE
Communities are healthy and safe	<b>Community health and safety</b> <ul style="list-style-type: none"> <li>• Implement the Community Safety Policy by:               <ul style="list-style-type: none"> <li>• Assisting communities in community safety planning and the establishment of neighbourhood support groups and night patrols</li> <li>• Co-ordinating the local Safer Community Forum</li> <li>• Strengthening links with 'Tauranga Moana Safe City'</li> </ul> </li> <li>• Encourage development that results in a built environment that is safe and improves the health of residents</li> <li>• Support sports clubs and provide opportunities for community participation in sport and recreation</li> <li>• Secure professional lifeguard services for the main ocean beaches over the peak summer holiday period.</li> </ul>	Facilitator  Facilitator  Facilitator  Partner  Lead  Lead
	<b>Community support</b> <ul style="list-style-type: none"> <li>• Provide support to communities by:               <ul style="list-style-type: none"> <li>• Responding, as appropriate, to issues emerging within our communities</li> <li>• Advocating to central government and other relevant agencies for integrated and effective solutions to the health and safety needs of communities</li> <li>• Working co-operatively with central government departments and relevant organisations to assist in the effective development and delivery of well co-ordinated services</li> <li>• Encouraging and supporting community organisations to use business strategies for generating income in the pursuit of social outcomes.</li> </ul> </li> </ul>	Research/monitoring  Advocate  Facilitator  Facilitator

GOAL	OUR APPROACH	OUR ROLE
Communities are healthy and safe (cont.)	<p><b>Community support (cont.)</b></p> <ul style="list-style-type: none"> <li>• Advocating for and supporting community-based initiatives that promote local access to social services.</li> <li>• Ensuring that the way we interact with other agencies, for example through facilitation and advocacy achieves benefit for our communities.</li> <li>• Advocating for initiatives that support and acknowledge the contributions of volunteers to the vitality of local communities.</li> <li>• Investigate the concept of equity and its implications for the provision of our services.</li> </ul>	<p>Advocate</p> <p>Lead</p> <p>Advocate</p> <p>Lead</p>
	<p><b>Funding and financial relief</b></p> <ul style="list-style-type: none"> <li>• Provide funding and limited financial relief by: <ul style="list-style-type: none"> <li>• Promoting and raising awareness of available external funding options.</li> <li>• Supporting initiatives through service delivery contracts, where appropriate.</li> <li>• Applying for external funding to support improved community well-being in our District.</li> <li>• Promoting our ‘Facilities in the Community Fund’ (provided through the Recreation and Leisure Strategy).</li> <li>• Promoting our community funding opportunities.</li> <li>• Providing limited financial relief from fees and rates for ratepayers experiencing extreme financial hardship.</li> </ul> </li> </ul>	<p>Facilitator</p> <p>Lead</p> <p>Lead/Partner</p> <p>Lead/Facilitator</p> <p>Lead/Facilitator</p> <p>Lead/Facilitator</p>
Communities are vibrant and diverse	<p><b>Community identity</b></p> <ul style="list-style-type: none"> <li>• Build the identity of communities in our District by: <ul style="list-style-type: none"> <li>• Identifying and protecting important cultural and heritage sites.</li> <li>• Supporting the co-ordination of festivals, sporting and cultural events that contribute to the local economy and reflect the diversity of the many groups within communities.</li> <li>• Supporting initiatives that promote the local identity of town centres and rural areas in our District.</li> <li>• Advocating for and facilitating the provision of sub-regional arts, cultural and heritage facilities.</li> <li>• Supporting community landscape plans undertaken by community groups which promote the development or protection of the identity of urban areas in our District.</li> <li>• Encouraging the use of our Residential Development Guidelines so that development complements the natural and existing built environment and supports SmartGrowth principles.</li> <li>• Supporting activities and initiatives run by and for young people to give them a sense of belonging and place within our communities and opportunities for skill development.</li> <li>• Funding specialist agencies to promote and provide access to the arts and culture across our District.</li> </ul> </li> </ul>	<p>Advocate/Facilitator/Partner</p> <p>Facilitator</p> <p>Facilitator</p> <p>Advocate/Facilitator</p> <p>Facilitator</p> <p>Lead</p> <p>Facilitator/Advocate</p> <p>Lead/Partner</p>



## WHAT WE ARE PLANNING TO DO

All information from 2017 - 2025 includes an adjustment for inflation.

PROJECT NUMBER	PROJECT NAME	\$'000									
		2016	2017	2018	2019	2020	2021	2022	2023	2024	2025
148804	Tauranga Orchestra Grant	1	1	1	1	1	1	1	1	1	1
148805	Katikati Open Air Art Grant	8	8	8	9	9	9	9	10	10	10
148809	Community Grants - Te Puke/Maketu	20	21	21	22	22	23	24	24	25	26
148810	Community Grants - Waihi Beach/Katikati	20	21	21	22	22	23	24	24	25	26
148811	Community Grants - Kaimai	20	21	21	22	22	23	24	24	25	26
148812	Community Matching Fund - Accum Ecological Fund	39	40	41	42	43	45	46	48	49	51
148901	Tauranga Citizens Advice Bureau Service Delivery Contract	12	12	13	13	13	14	14	15	15	16
149102	Sport Bay of Plenty Community Service Delivery Contract	50	51	53	54	56	57	59	61	63	65
149202	Bay of Plenty Surf Lifesaving - Service Delivery Contract	75	76	78	80	83	85	88	91	94	97
299901	Crime Prevention Projects	15	15	16	16	17	17	18	18	19	20
303901	Katikati Resource Centre Service Delivery Contract	18	19	19	20	20	21	22	22	23	24
315602	Bay of Plenty Local Authority Shared Services	40	41	42	43	44	46	47	49	50	52
323201	Papakainga Development	40	41	42	43	44	46	47	49	50	52
326701	Tauranga Art Gallery Service Delivery Contract	33	34	35	36	37	38	39	40	42	43
336101	Museum Facilities - Katikati	60	62	63	-	-	-	-	-	-	-
340901	Tauranga Moana Safe City	15	15	16	16	17	17	18	18	19	20

PROJECT NUMBER	PROJECT NAME	\$'000									
		2016	2017	2018	2019	2020	2021	2022	2023	2024	2025
341001	A Healthy Whare Project	10	10	11	11	11	11	12	12	13	13
341901	Feasibility study for Maketu Community Hub	50	-	-	-	-	-	-	-	-	-
149001	Tauranga Community Arts Council Service Delivery Contract	47	48	49	51	52	54	55	57	59	61
300301	Cultural Development / Wellbeing	15	15	16	16	17	17	18	18	19	20
331001	Supporting Iwi and Hapu Management	25	26	26	27	28	11	12	12	13	13
334801	Marae Maintenance	33	34	35	36	37	38	39	40	42	43

## MAJOR PROJECTS PLANNED FOR 2015 - 2025

- Holding Funding Expositions (expos) – strengthening community organisations.
- Supporting the development of Iwi and Hapu Management Plans \$232,775 over ten years.
- Supporting the development of papakainga (housing on multiply-owned Maori land) in collaboration with other agencies \$172,902 over ten years.

## HOW OUR PLANS HAVE CHANGED

The timing and costs of some of our projects have been updated since we adopted our 2012 - 2022 Long Term Plan (LTP).

To see how our plans have changed click [here](#) for the complete list of the projects/programmes that have been revised or alternatively visit our website [www.westernbay.govt.nz](http://www.westernbay.govt.nz).



## HOW WE WILL TRACK PROGRESS - LEVELS OF SERVICE

WHAT WE PROVIDE	WE'LL KNOW WE'RE MEETING THE SERVICE IF	ACTUAL	TARGET				
		2014	2016	2017	2018	2019- 21	2022 - 25
Develop and deliver a coordinated Community Safety Programme in accordance with the Community Safety Policy.	Number of community safety initiatives supported by Council.	10	9	9	9	9	9
We will actively build capability in community organisations.	Number of capability building workshops held.	2	≥2	≥2	≥2	≥2	≥2
We will engage with Tangata Whenua.	Number of engagement initiatives with Tangata Whenua.	NEW	≥4	≥4	≥4	≥4	≥4
	Number of new or reviewed iwi/hapu management plans received.	NEW	≥2	≥2	≥2	≥2	≥2

## KEY ASSUMPTIONS

ASSUMPTION	DESCRIPTION	RISK
Treaty of Waitangi settlements	The settlement of the Treaty of Waitangi (Te Tiriti o Waitangi) claims in the District will continue over the next ten years. This will change the economic landscape, and is likely to offer new opportunities for collaboration and partnership.	Council may need to change the way we work with iwi and hapu, for example providing for co-governance of assets.
Community capacity	The community have capacity and capability to lead their own planning, and want support from Council to do so.	Insufficient capacity may lead to stalled community planning and development. Council may need to invest resources in community capacity building.

## SIGNIFICANT EFFECTS OF PROVIDING THIS ACTIVITY

WELL-BEING	POSITIVE	NEGATIVE	HOW WE ARE ADDRESSING THESE EFFECTS
Social	<ul style="list-style-type: none"> <li>+ Activities are targeted at improving the well-being of communities in our District.</li> <li>+ Community building activities encourage people to be involved in their community.</li> <li>+ Community organisations are supported.</li> <li>+ Improves safety in communities.</li> </ul>	<ul style="list-style-type: none"> <li>- Time consuming nature of building relationships.</li> <li>- Difficulties in engaging with some groups in the community.</li> </ul>	<ul style="list-style-type: none"> <li>• Effective use of technology and emerging tools to engage with our communities.</li> </ul>
Environmental	<ul style="list-style-type: none"> <li>+ Encourage the establishment and support of local environmental care groups to rehabilitate and protect the environment.</li> </ul>	<ul style="list-style-type: none"> <li>- None identified.</li> </ul>	
Economic	<ul style="list-style-type: none"> <li>+ The arts and events can encourage entrepreneurs and businesses to our District.</li> </ul>	<ul style="list-style-type: none"> <li>- While Council is supportive of community events there is only a minimal budget to support the running of events.</li> </ul>	<ul style="list-style-type: none"> <li>• Building the capability of local not-for-profit organisations.</li> <li>• Providing mentoring service from Events Net.</li> </ul>
Cultural	<ul style="list-style-type: none"> <li>+ Protects cultural heritage.</li> </ul>	<ul style="list-style-type: none"> <li>- Reluctance of some Māori to share their cultural heritage information with us may make it difficult to protect.</li> <li>- Landowners may not be aware or wish to protect cultural heritage sites on private land.</li> </ul>	<ul style="list-style-type: none"> <li>• Effect a District Plan Change to include cultural heritage sites in the Plan.</li> </ul>

## WHERE THE MONEY COMES FROM

### COMMUNITY BUILDING

#### COMMUNITY OUTCOME

Social infrastructure (the community facilities, services and networks that help individuals, families, groups and communities) meets the diverse needs of communities; communities are strong and can influence their futures.

#### GOALS

- Communities are healthy and safe.
- Communities are vibrant and diverse.
- Communities participate in the development of their futures.

#### DISCUSSION / RATIONALE

##### **Building communities - grants and contracts**

This policy covers:

- Creative Tauranga
- Sport Bay of Plenty
- Bay of Plenty Surf Lifesaving
- Te Puke Sports fields
- Fee abatement scheme
- Discretionary grants.

The community as a whole benefits from Council's service delivery contracts and grant schemes. Individuals benefiting from these activities cannot be separately identified.

#### FUNDING APPROACH

General Rates and Uniform Annual General Charge fund this activity.