



Statistics for Council's group of activities

REPRESENTATION

WHAT WE PROVIDE

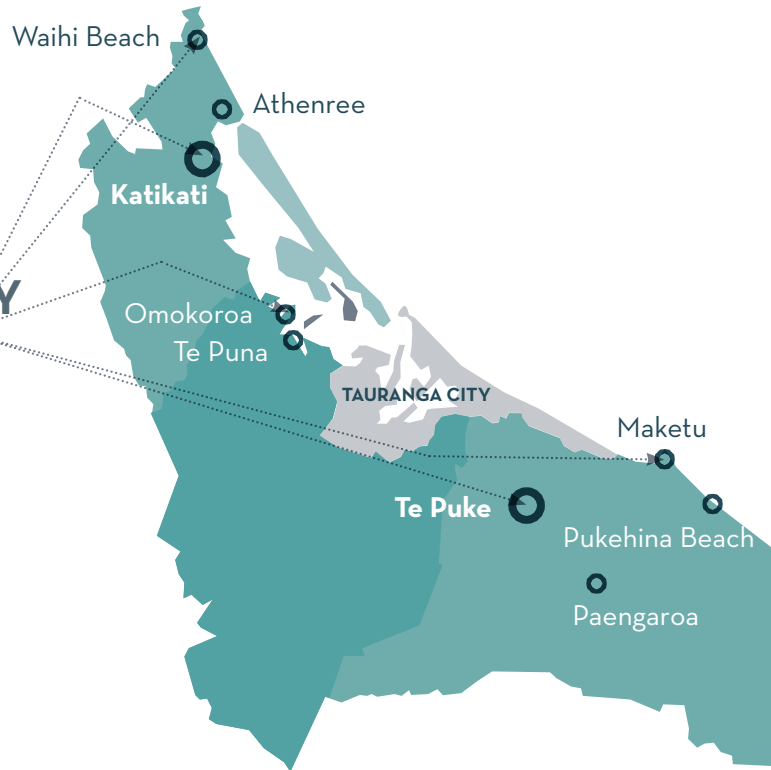
REPRESENTATION IS PROVIDED BY:



1 MAYOR



5 COMMUNITY BOARDS



11 COUNCILLORS



1 PARTNERSHIP FORUM
Comprising iwi and hapū
representatives



Participation in a range of
**COMMUNITY ORGANISATIONS,
BOARDS & CO-GOVERNANCE
STRUCTURES**

within the Western Bay of Plenty District

PLANNING FOR THE FUTURE

PLANNING FOR THE FUTURE

Council maintains and develops strategic plans, policies and bylaws to support the health, safety and general wellbeing of communities. This involves responding to legislative changes, updating and developing new strategies, monitoring the impact of growth and development in our District, and working with key stakeholders and other agencies to plan for our future.

SMARTGROWTH - AN OVERVIEW

SmartGrowth is the growth management strategy for the western Bay of Plenty sub-region, including both the Western Bay of Plenty District and Tauranga City. This area has experienced population growth since the 1950s.

TE ARA MUA

Council will be working with the Partnership Forum to implement Te Ara Mua - the pathway forward. Te Ara Mua provides Ngā Whetu, a framework for identifying issues of significance to Māori in line with the Treaty of Waitangi principles that have been adopted by Council, and the clear statutory obligations Council has to Māori. The Plan also outlines Ngā Kaihoe, an annual work programme for the Partnership Forum to drive actions that address issues of significance.

WHAT WE PROVIDE

PLANNING FOR THE FUTURE INCLUDES:



**POLICY &
PLANNING**



**RESOURCE
MANAGEMENT**



**INFRASTRUCTURE PLANNING
ACTIVITIES**

COMMUNITY BUILDING

WHAT WE PROVIDE

SERVICE DELIVERY CONTRACTS

- *Katikati*
- DAVE HUME
- SWIMMING POOL

- *Te Puke*
- MEMORIAL
- SWIMMING POOL

- *Bay of Plenty*
- SURF LIFESAVING

- CREATIVE
- BAY OF
- PLENTY



• SPORT BAY OF PLENTY

• *Te Puke*

• SPORTS FIELD

LIBRARIES AND SERVICE CENTRE

WHAT WE PROVIDE



ONE
HEAD OFFICE
with service centre



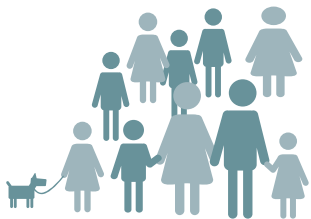
FOUR
LIBRARIES
and service centres



104,150 ITEMS HELD
IN THE
FOUR LIBRARIES



291,951
LIBRARY ITEMS ISSUED
during 1 July 2017 - 30 June 2018



9,106
PEOPLE ATTENDED
545 EVENTS

from 1 July 2017 - 30 June 2018 at our school holiday, weekly programmes, interactive school programmes



INFORMATION AND ASSISTANCE TO
10,007
INTERNATIONAL AND LOCAL VISITORS
from 1 July 2017 - 30 June 2018 at our visitor centres Katikati and Te Duke



Funding to support
KATIKATI COMMUNITY CENTRE
AND TAURANGA CITIZENS' ADVICE
BUREAU

SCHOOL HOLIDAY EVENTS, WEEKLY PROGRAMMES,
INTERACTIVE SCHOOL PROGRAMMES



281,514
PEOPLE VISITED WESTERN BAY
COUNCIL'S LIBRARIES AND SERVICE
CENTRES
from 1 July 2017 - 30 June 2018



71,984
FREE
WIFI



LOCAL
HISTORY
ARCHIVES

89,012
SESSIONS OF FREE WIFI
during 1 July 2017 - 30 June 2018

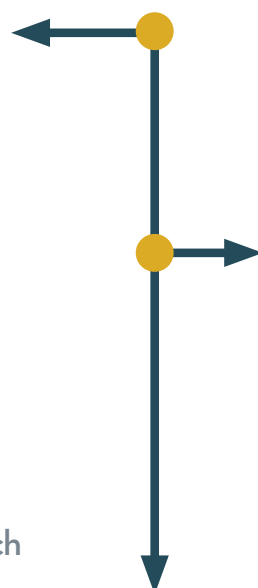
COMMUNITY FACILITIES

WHAT WE PROVIDE

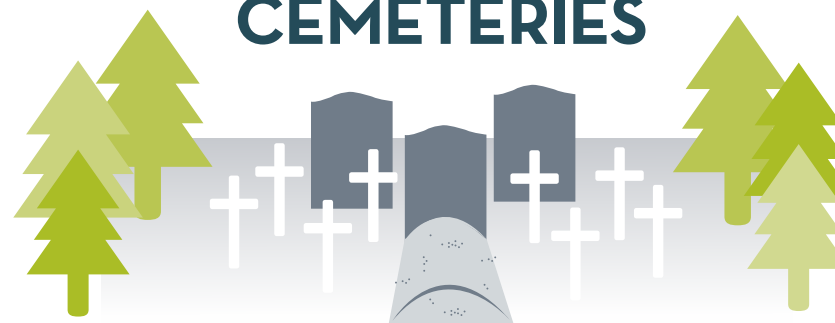
HOUSING FOR OLDER PEOPLE



34 : **17** : **19**
UNITS : **UNITS** : **UNITS**
 in Te Puke : in Katikati : in Waihi Beach



CEMETERIES



KATIKATI : **MAKETU** : **OROPI**
 Cemetery : Cemetery : Cemetery



TE PUKE Cemetery
 (and old Te Puke Cemetery where further plots are unavailable)

HELP SUPPORT COMMUNITY HALLS

- KAIMAI HALL
- KATIKATI WAR MEMORIAL HALL
- OHAUITI HALL
- OMANAWA HALL
- OMOKOROA SETTLERS HALL
- OROPI HALL
- PAHOIA COMMUNITY HALL
- PAENGAROA HALL
- PUKEHINA BEACH COMMUNITY CENTRE
- PYES PA HALL
- TE PUKE WAR MEMORIAL HALL & Settlers Lounge & Pioneer Room
- TE PUNA COMMUNITY CENTRE
- TE PUNA WAR MEMORIAL HALL (Land purchased and construction planning underway)
- TE RANGA HALL
- WAIHI BEACH COMMUNITY CENTRE
- WHAKAMARAMA HALL

CIVIL DEFENCE AND EMERGENCY MANAGEMENT

WHAT WE PROVIDE



**RESILIENCE
PLANNING**



COUNCIL STAFF
trained to respond



EDUCATION



**EMERGENCY
OPERATIONS
CENTRE**



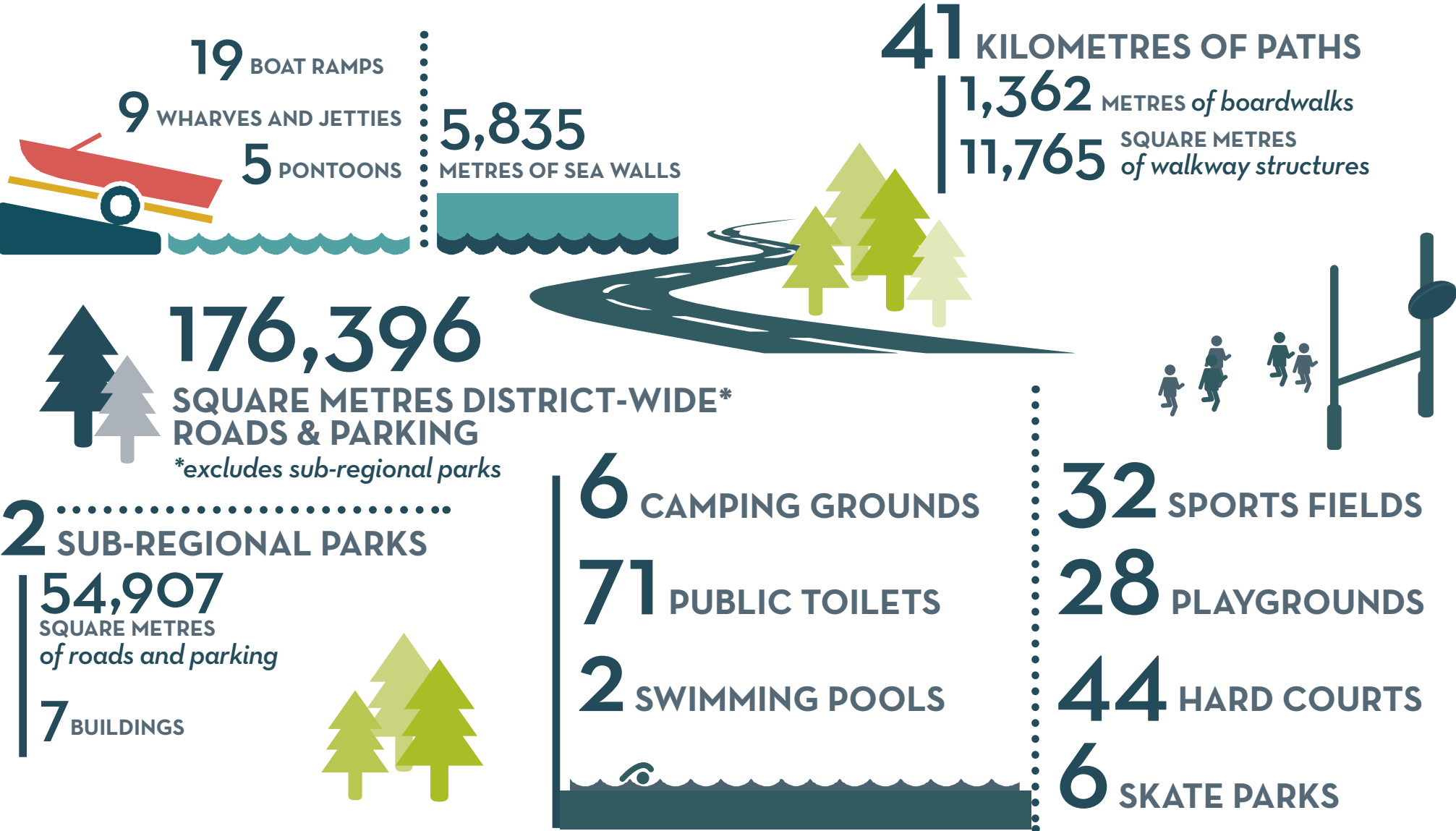
**COMMUNICATIONS
SUPPORT**

**BAY OF
PLENTY CIVIL
DEFENCE AND
EMERGENCY
MANAGEMENT
GROUP** *and Plan*



RECREATION AND LEISURE

WHAT WE PROVIDE



REGULATORY SERVICES

WHAT WE PROVIDE

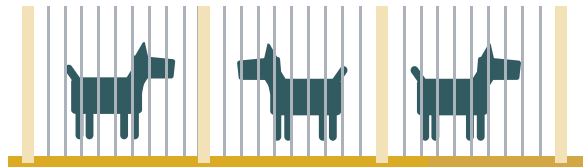


BUILDING CONSENT PROCESSING



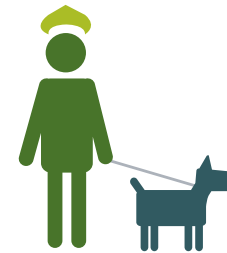
FOOD PREMISES INSPECTION LICENSING - FOOD AND LIQUOR

NOISE CONTROL



DOG SHELTERS

ANIMAL CONTROL OFFICERS



TRANSPORTATION

WHAT WE PROVIDE

1055.5 KILOMETRES

*of network connections
to state highways*



Sealed roads:

878.4 KILOMETRES

UnSealed roads:

177.1 KILOMETRES

Urban roads:

158.6 KILOMETRES

Rural roads:

896.2 KILOMETRES

139
BRIDGES

163.9
HARD SURFACED FOOTPATHS

39
CULVERTS
*greater than
1.4m diameter*

0.8 KILOMETERS
METALLED SURFACED FOOTPATHS

2,482
STREETLIGHTS

6,180
ROAD SIGNS

An illustration of a yellow streetlight with a curved arm and a teal arrow-shaped road sign pointing to the right. The streetlight has a yellow oval shadow at its base.

WATER SUPPLY

WHAT WE PROVIDE



Water reticulation operated in three supply zones:

- **WESTERN**
 - Waihi Beach, Katikati
- **CENTRAL**
 - Omokoroa, Te Puna
- **EASTERN**
 - Te Puke, Maketu, Pukehina Beach, Paengaroa



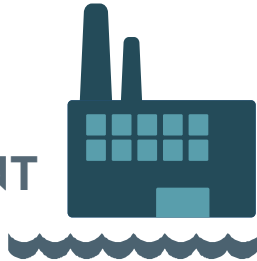
DISTRICT-WIDE WATER METERING completed 2018

All connections to Council's water supply are metered.

26 BOOSTER PUMP STATIONS

9 BORE FIELDS

10 WATER TREATMENT PLANTS



1 SURFACE SUPPLY
(Bush Dam)



24 RESERVOIRS & TANK SITES

APPROXIMATELY

690 KILOMETRES
of water mains

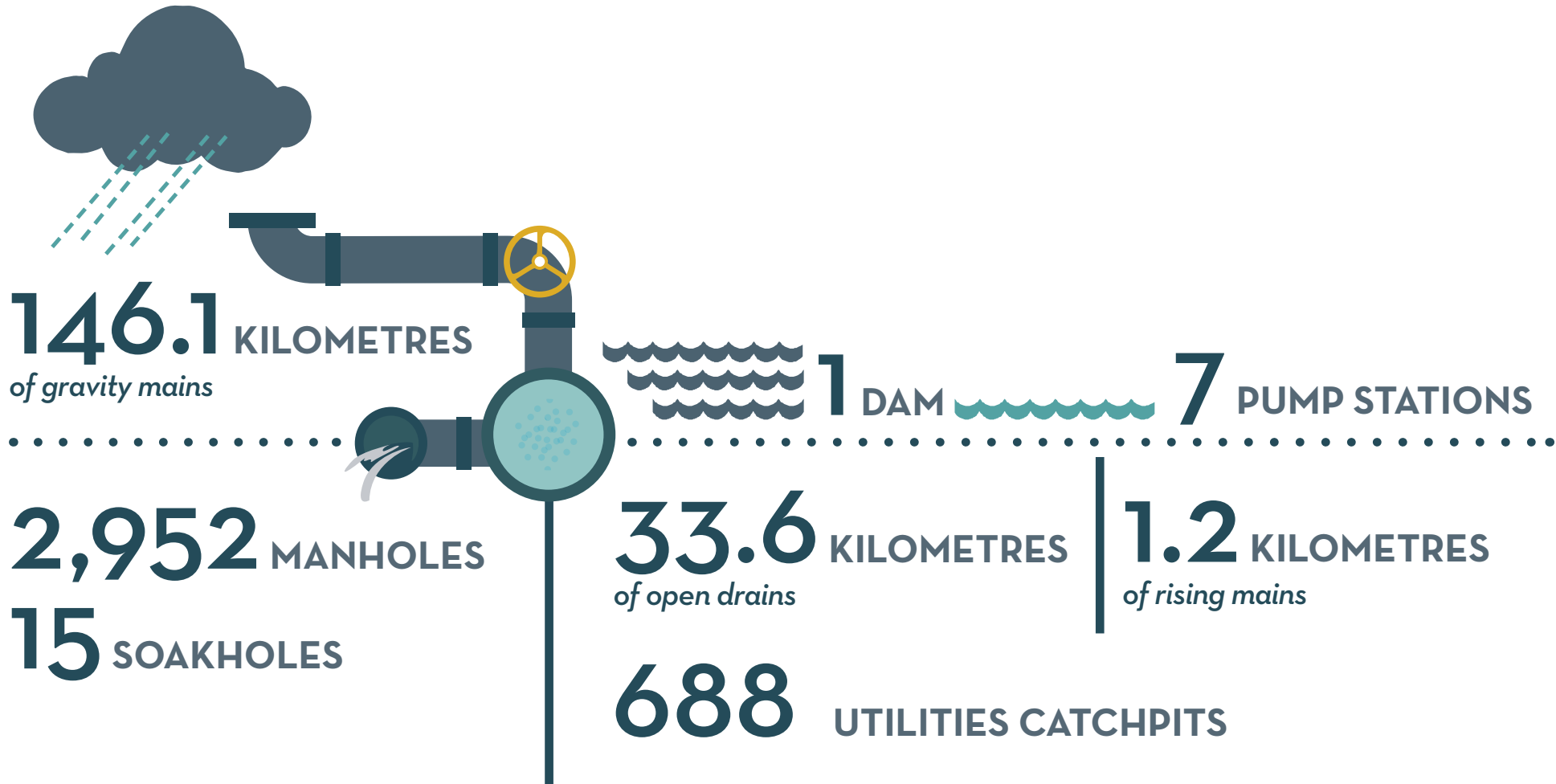


15,600 out of **17,200**

water main fronting properties are connected to Council's water supply

STORMWATER

WHAT WE PROVIDE



NATURAL ENVIRONMENT

WHAT WE PROVIDE



EDUCATION PROGRAMMES & INITIATIVES

-
-
- *Support for*
- **ENVIRONMENTAL**
- **SERVICE DELIVERY**
- **PROVIDERS**
-

- **FENCING SUBSIDIES**
- *(protected bush lots)*

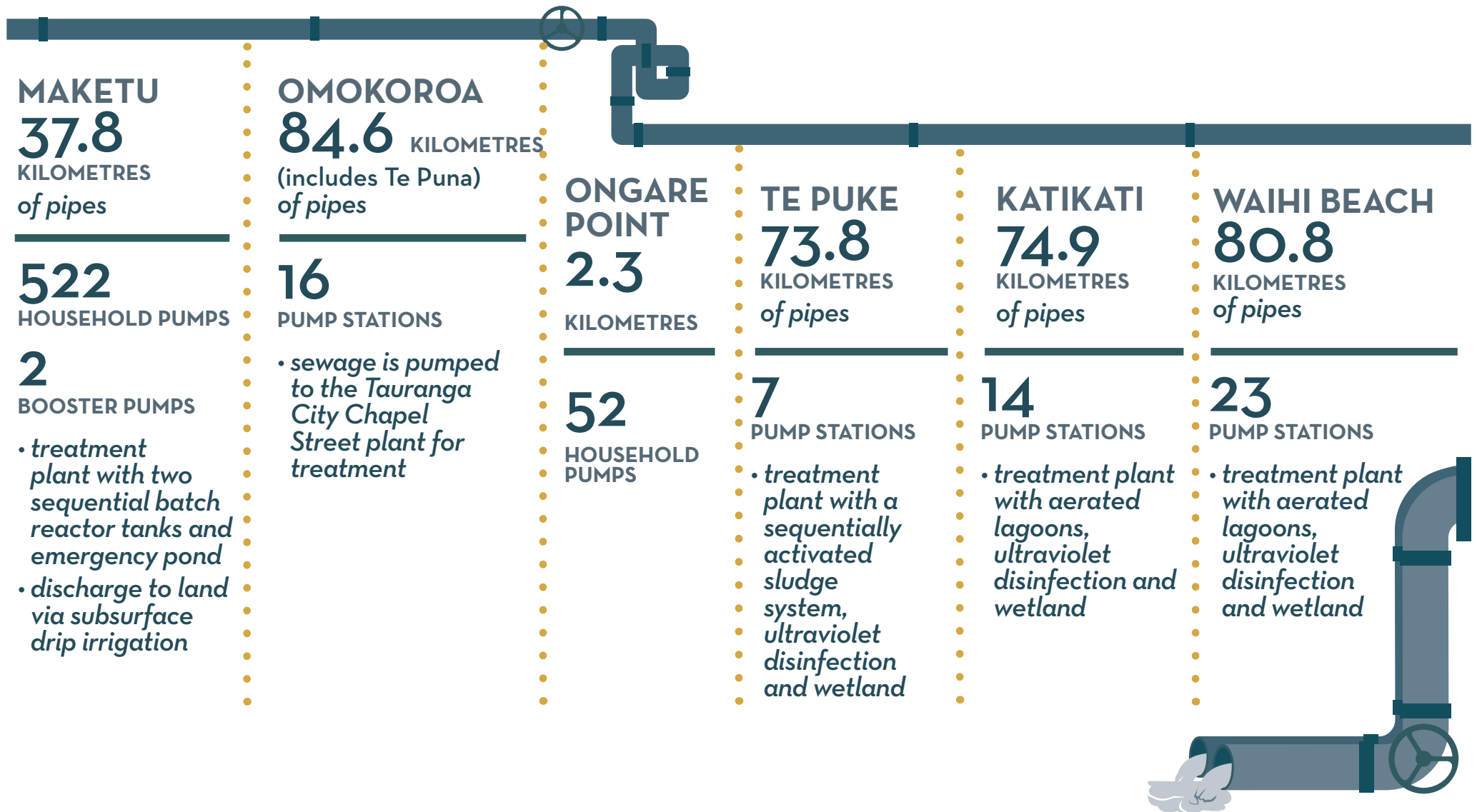


-
- **COMMUNITY**
- **GROUP SUPPORT**
-

- **LIAISON WITH THE**
- **REGIONAL COUNCIL**
- **AND PARTNERS**
- *with a focus on environmental issues*

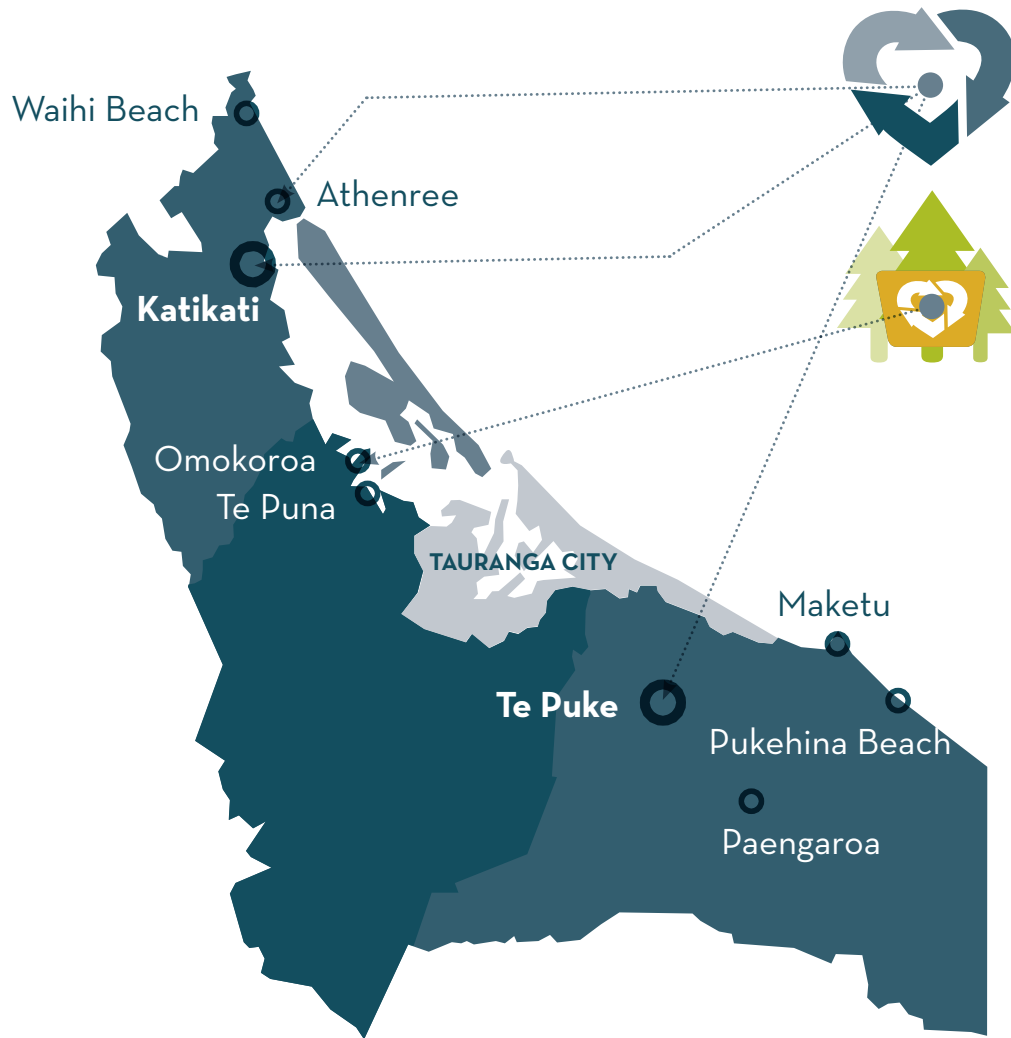
WASTEWATER

WHAT WE PROVIDE



SOLID WASTE

WHAT WE PROVIDE



RECYCLING & GREENWASTE CENTRES

Katikati, Te Puke, Athenree



GREENWASTE DROP-OFF

Omokoroa



EDUCATION PROGRAMMES



ONGOING MONITORING OF CLOSED & CAPPED LANDFILLS

Athenree, Te Puke, Waihi Beach



MONITOR ILLEGAL DUMPING (FLY-DUMPING)

across our District