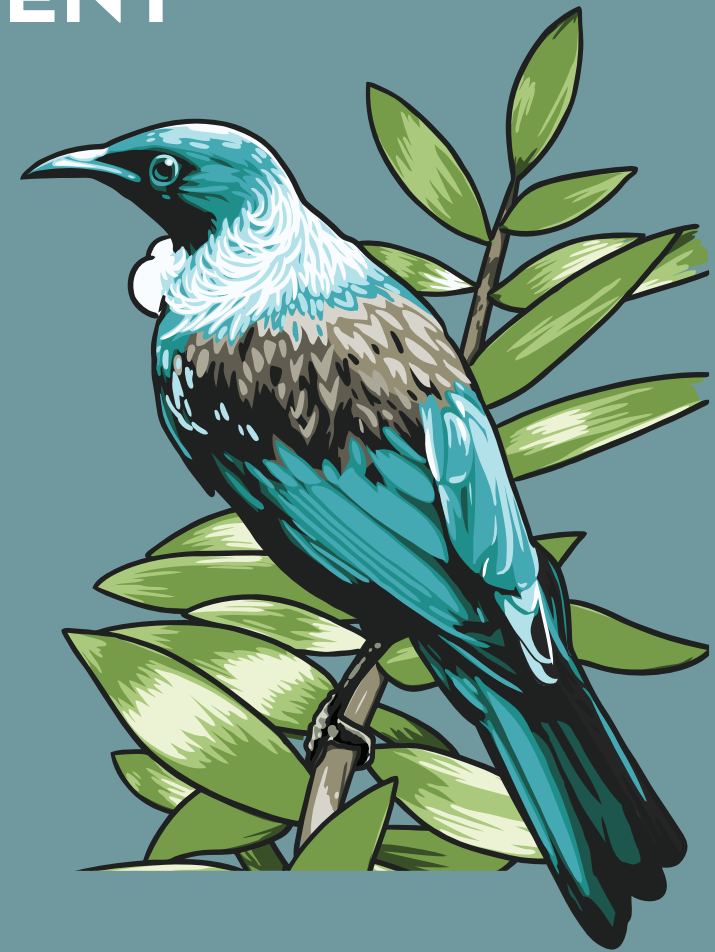


NATURAL ENVIRONMENT



NATURAL ENVIRONMENT

OVERVIEW

The natural environment of the Western Bay is one of our most valuable assets covering 212,000 hectares of coastal, rural and urban areas. The land of the Western Bay of Plenty faces north-east to the sea. To the West are the rugged bush-covered Kaimai ranges. Numerous streams drain the Kaimais, flowing down through the hills and coastal lowlands into the swampy estuaries and mudflats of the Tauranga Harbour.

The activities that are provided within the Natural Environment Strategy include:

- Environmental education programmes and initiatives delivered mostly through service delivery contracts with Wild About New Zealand and Coastcare
- Support for community based environmental projects provided by our Environmental Development Officer who helps communities to realise their capacity to drive and implement environmental projects
- Fencing subsidies to encourage the protection of important ecological areas on private land
- A small fund that can be used to support projects or initiatives that enhance the quality of the environment.

WHY WE PROVIDE IT

OUR COMMUNITY OUTCOME

Areas of our natural environment with important environmental, cultural and heritage values are protected.

OUR GOALS

- Support the provision of environmental education and information across our District.
- Support community based environmental projects.

WHAT WE PROVIDE - *NATURAL ENVIRONMENT*



EDUCATION PROGRAMMES & INITIATIVES

Support for
**ENVIRONMENTAL
SERVICE DELIVERY
PROVIDERS**

FENCING SUBSIDIES
(protected bush lots)



**COMMUNITY
GROUP SUPPORT**

**LIAISON WITH THE
REGIONAL COUNCIL
AND PARTNERS**

with a focus on environmental issues

HOW WE WILL TRACK PROGRESS TOWARDS OUR GOALS

GOAL	WE'LL KNOW WE'RE MEETING OUR GOAL IF	TARGET 2017/18
Support the provision of environmental education and information across our District.	Number of protection lots monitored to ensure compliance with covenants.	≥40
Support community-based environmental projects.	Percentage of residents surveyed who perceive the environmental attributes monitored have improved or being maintained. <i>Please note: the environmental features monitored include the quality of streams and rivers, harbours and estuaries, air quality, the amount of noxious weeds, protection of historic places, general level of cleanliness and the amount and quality of native plants and animals.</i>	≥40%
	Annual number of training initiatives supported.	≥5

HOW WE WILL TRACK PROGRESS - LEVELS OF SERVICE

WHAT WE PROVIDE	WE'LL KNOW WE'RE MEETING THE SERVICE IF	TARGET 2017/18
Facilitate and support community involvement in protecting and enhancing the natural environment.	Percentage of environmental groups that Council actively supports.	≥50%
	Number of individual landowners actively supported to protect remnant bush and riparian zones.	≥50

HOW OUR PLANS HAVE CHANGED

The timing and costs of some of our projects have been updated since we adopted our 2015 - 2025 Long Term Plan (LTP).

To see how our plans have changed click [here](#) for the complete list of these projects/programmes that have been revised or alternatively visit our website www.westernbay.govt.nz.

SUMMARY FINANCIAL FORECAST

NATURAL ENVIRONMENT

	LONG TERM PLAN ESTIMATE \$'000	ANNUAL PLAN ESTIMATE \$'000	VARIANCE INCREASE/ DECREASE \$'000
FOR THE YEARS ENDED 30 JUNE	2018	2018	\$'000
Analysis of expenditure by activity			
Environment protection grants	107	130	24
Natural environment support	242	270	28
Coastcare	58	55	(3)
Land drainage	316	335	19
Total operating expenditure	722	791	68
Analysis of expenditure by class			
Direct costs	667	720	53
Overhead costs	51	67	16
Depreciation	4	3	(1)
Total operating expenditure	722	791	68
Revenue			
Targeted rates	329	349	20
Financial contributions	194	185	(9)
Total revenue	523	533	11
Net cost of service - surplus/(deficit)	(200)	(258)	(58)
Capital expenditure	-	-	-
Total other funding required	(200)	(258)	(58)
Other funding provided by			
General rate	131	147	16
Environmental protection rate	47	45	(2)
Reserves and future surpluses	21	65	44
Total other funding	200	258	58