

MEETING — AGENDA —

Ngā Take

www.westernbay.govt.nz



Western Bay of Plenty
District Council

OPERATIONS AND MONITORING COMMITTEE

Komiti Whakahaere



OP16
Thursday, 6 December 2018
Council Chambers
Barkes Corner, Tauranga
9.30am

Notice of Meeting No. OP16 Te Karere

Operations and Monitoring Committee Komiti Whakahaere

Thursday, 6 December 2018
Council Chambers
Barkes Corner
9.30am

His Worship the Mayor

G J Webber

Councillors:

D Thwaites (Chairperson)
J Palmer (Deputy Chairperson)
G Dally
M Dean
M Lally
P Mackay
K Marsh
D Marshall
M Murray-Benge
J Scrimgeour
M Williams

Media
Staff

Miriam Taris
Chief Executive Officer
Western Bay of Plenty District Council



Western Bay of Plenty
District Council

Te Kaunihera a rohe mai i nga Kuri-a-Whareki ki Otamarakau ki te Uru

www.westernbay.govt.nz



Operations and Monitoring Committee Delegations Mangai o Te Kaunihera

Quorum:

The quorum for this meeting is six members.

Role:

Subject to compliance with Council strategies, policies, plans and legislation:

- To monitor performance and outcomes over all of Council's service functions including the following:
 - Regulatory Operations
 - Rooding Operations
 - Utilities Operations
 - Parks, Reserves, Cemeteries and other council property
 - Customer services, libraries
 - Corporate Property Operations and development
 - Sub Regional Parks
 - Operational service contracts (e.g. swimming pools, community halls)
 - Emergency Management
 - Rural Fire

General Delegations:

- To make decisions to enable and enhance service delivery performance.
- To approve operational policy including resolving operational policy matters defined as the implementation of policy.
- To resolve all operational matters as referred by Community Boards.
- To make decisions in regard to assets to implement Council's plans, policies and projects as contained in the Long Term Plan and Annual Plans.
- To monitor assets and resources required for the delivery of services.
- To monitor the implementation of Council's strategies, plans, policies and projects contained in Council's Long Term Plan and Annual Plans.
- To receive and resolve on or recommend to Council or its Committees as appropriate the reports, recommendations and minutes of the Joint Road Safety Committee and any other Joint Committee, working group or forum as directed by Council.
- To undertake on behalf of Council all processes and actions (including consultation) for the amendment of bylaw schedules relating to operational services precedent to the recommendation to Council for adoption of the amendments.

Financial Delegations:

Pursuant to Section 4(1) of the Public Bodies Contracts Act 1959, the Committee shall have the power to enter into contracts in respect of the Committee's functions to a maximum value of \$5,000,000 for any one contract, provided that the exercise of this power shall be subject to, and within the allocation of funds set aside for that purpose in the Long Term Plan, the Annual Plan and Budget or as otherwise specifically approved by Council.

To report to Council financial outcomes and recommend any changes or variations to allocated budgets.

Other:

The Committee may without confirmation by Council exercise or perform any function, power or duty relating to those matters delegated by Council in like manner, and with the same effect, as the Council could itself have exercised or performed them.

The Committee may delegate any of its functions, duties or powers to a subcommittee subject to the restrictions on its delegations and provided that any sub-delegation to subcommittees includes a statement of purpose and specification of task.

The Committee may make recommendations to Council or its Committees on any matters to achieve the outcomes required in the role of the Committee but outside its delegated authorities.

Agenda for Meeting No. OP16

Pages

**Present
In Attendance
Apologies**

Public Excluded Items

The Council may by resolution require any item of business contained in the public excluded section of the agenda to be dealt with while the public are present.

Public Forum

A period of up to 30 minutes is set aside for a public forum. Members of the public may attend to address the Committee for up to three minutes on items that fall within the delegations of the Committee provided the matters are not subject to legal proceedings, or to a process providing for the hearing of submissions. Speakers may be questioned through the Chairperson by members, but questions must be confined to obtaining information or clarification on matters raised by the speaker. The Chairperson has discretion in regard to time extensions.

Such presentations do not form part of the formal business of the meeting, a brief record will be kept of matters raised during any public forum section of the meeting with matters for action to be referred through the customer contact centre request system, while those requiring further investigation will be referred to the Chief Executive.

OP16.1 **Presentation – Belk Road and Tauriko Project Update
NZTA**

Representatives from NZTA will be in attendance.

OP16.2 **Presentation – Waiari Water Main**

Representatives from Westlink and staff will be in attendance to outline the approval process for the location of the water main in the road.

Attached is a report from the Deputy Chief Executive dated 23 November 2018.

The open section of the Operations and Monitoring Committee Information Pack No. OP16 has been circulated separately with the agenda.

Local Government Official Information and Meetings Act

Exclusion of the Public

Schedule 2A

Recommendation

THAT the public be excluded from the following part of this meeting namely:

- *Presentation - Te Puke Holiday Park Leaseholder – In Confidence*
- *Report - Purchase of 24 Middlebrook Drive – In Confidence*
- *Infrastructure Services Report - December 2018 - In Confidence*

The general subject to each matter to be considered while the public is excluded, the reason for passing this resolution in relation to each matter, and the specific grounds under Section 48(1) of the Local Government Official Information and Meetings Act 1987 for the passing of this resolution are as follows:

<i>General subject of each matter to be considered</i>	<i>Reason for passing this resolution in relation to each matter</i>	<i>Ground(s) under Section 48(1) for the passing of this resolution</i>
<i>Presentation – Te Puke Holiday Park Leaseholder In Confidence</i>	<i>THAT the public conduct of the relevant part of the proceedings of the meeting would likely result in the disclosure of information for which good reason for withholding would exist.</i>	<i>Protect the privacy of natural persons, including that of deceased natural persons.</i>
<i>Report – Purchase of 24 Middlebrook Drive</i>	<i>THAT the public conduct of the relevant part of the proceedings of the meeting would likely result in the disclosure of information for which good reason for withholding would exist.</i>	<i>To enable the Committee to deliberate in private on its decision as a right of appeal lies to a Court or Tribunal against the final decision on the Committee in these proceedings.</i>

<i>General subject of each matter to be considered</i>	<i>Reason for passing this resolution in relation to each matter</i>	<i>Ground(s) under Section 48(1) for the passing of this resolution</i>
<i>Infrastructure Services Report – December 2018</i>	<i>THAT the public conduct of the relevant part of the proceedings of the meeting would likely result in the disclosure of information for which good reason for withholding would exist.</i>	<i>For reasons previously stated on the relevant minutes..</i>

Western Bay of Plenty District Council
Operations & Monitoring Committee
Infrastructure Services Report December 2018

Purpose

To monitor and provide updates to the Operations & Monitoring Committee on current projects, contracts and works programmes.

Recommendation

- 1. THAT the Deputy Chief Executive's Report dated 23 November 2018 and titled Infrastructure Services Report December 2018 be received.*
- 2. THAT the Open Section of the Operations & Monitoring Committee Information Pack No. OP16 dated 23 November 2018 be received.*
- 3. THAT the report relates to an issue that is considered to be of low significance in terms of Council's Significance and Engagement Policy.*



Gary Allis
Deputy Chief Executive Officer

1. Utilities

1.1 Ongare Point Wastewater Scheme Preliminary Investigations

Council is currently building a Septic Tank Effluent Pump (STEP) wastewater system for the Ongare Point community.

Four final tanks are required to be installed. The Treatment Plant construction is complete with only finishing work, including fencing and the access track to be completed. The treatment plant is currently receiving waste from the connected tanks. Once sufficient waste has been received at the treatment plant the plant will be commissioned.

This project is expected to be completed by the end of November.

1.2 Home Worm Composting Workshops

Dates for the next workshops are available on Council's website at:

<http://www.westernbay.govt.nz/our-services/rubbish-recycling-waste/Pages/Worm-Composting.aspx>

All bookings are now made through www.eventfinda.co.nz

The Worm Workshop was held on 10 November in Omokoroa.

1.3 Katikati Recycling Centre Opening Hours Trial

The Katikati Recycling centre will continue with the extended opening hours on Thursday afternoons once ratified by Council.

Centre staff and the public are also supportive of the extended hours, as it removes the pressure from the morning and results in a safer, less stressful environment for everyone. The new hours will continue for another three months pending a report to Council on the benefits and cost.

1.4 Te Puke Recycling Centre Extended Opening Hour Trial

Te Puke Recycling Centre extended its opening hours in September for a three-month trial. Initial survey results has shown an overwhelming support for earlier opening and later closing times on a Tuesday and Thursday.

The centre will open from 8am to 5pm on Tuesdays and Thursdays with Saturday hours remaining the same from 8am until 4pm. Western Bay of Plenty District Council has been granted resource consent to extend the hours in response to community demand.

The extended hours on Tuesdays and Thursdays will enable people to drop off their recyclables on their way to or from work. The three-month trial started on Tuesday, 4 September 2018 and ends on 29 November 2018.

1.5 Athenree Recycle Centre Holiday Hours

The Athenree Recycle Centre will operate with more open days and extended hours during December 2018 and January 2019. The hours will be advertised through Council's Website, social media, at the centre and handouts. Hours will also be forwarded to the Waihi Beach Information Centre. As in previous years, official green rubbish bags will be accepted at the centre (during opening hours) for disposal from Sunday, 23 December 2018 until the end of January 2019.

Normal rubbish collection day for Waihi Beach, Bowentown and Athenree is Monday. There will be no additional kerbside rubbish or recycling collections this year as the public holidays do not affect the Monday collections.

1.6 Boxing Day & 2 January 2019 Opening Day - Changes to Omokoroa Greenwaste Drop-off days

The Omokoroa green waste drop-off will be closed on Wednesday, 26 December 2018, (Boxing Day) this year but will open on Thursday, 27 December 2018 from 2pm to 4pm.

The centre will also be closed on Wednesday, 2 January 2019 but will be open on Thursday, 3 January 2019 to collect greenwaste. Saturdays remain unchanged with normal operating hours from 2pm to 4pm. No change. The Omokoroa Lion's volunteers have been briefed and will operate the site on the Thursdays as mentioned.

1.7 Christmas & New Year Rubbish Collection Information

Christmas and New Year fall on a Tuesday this year. There will be no private rubbish or recycling collected from the kerbside on Tuesday, 25 December 2018 or Tuesday, 1 January 2019.

Waste Management (Environmental Green Bins) has advised that the collection for the affected areas will be on the Saturdays prior to Christmas Day and New Year's Day. Collection will be on Saturday, 22 December (for Christmas Day) and Saturday 29 December (for New Year's Day). The areas affected are: Upper Papamoa, Maketu, Paengaroa, and rural Welcome Bay. All other areas in the District's rubbish will be collected on the usual collection day

1.8 Katikati Alternative Options Assessment

The Katikati Wastewater Consent renewal was approved on 24 August 2018 and the Consent conditions requires Council to look at alternative options for the long-term discharge of the treated wastewater from the Katikati Wastewater Treatment Plant.

A working group has been formed that includes Tangata Whenua, Councillors and Community Board representatives. The group has been meeting on a regular basis to assess the various options available. Meetings held to date have discussed beneficial reuse of wastewater and were productive. Potential sites have been narrowed down for the beneficial reuse option and these sites are currently being investigated further by technical consultants.

The engineering staff are currently undertaking an in-depth study of potential disposal options for each site. This is expected to take three months. Meetings with the working group will be put on hold until the engineering assessment is complete.

The feasibility assessment has been broken into three stages. Stage one looks at refining the sites selected for further investigations. It includes undertaking a planning assessment, technical assessment on appropriate disposal methods and developing success criteria to help determine the best method. Stage 1 is expected to be completed in late November and outcomes will be presented to the working group on the 12 December.

1.9 Highfields Pond

The draft ground water monitoring report has been received. It indicates that the water level in the pond can be raised, initially on a trial basis for recreational purposes. Calculations have to be undertaken to confirm that with a raised water level the pond still undertakes its required function as a stilling basin to reduce silt into the Uretara.

Indicatively Council is looking at including the funding of a trial raising of the water level in the 2019/20 Annual Plan. The trial includes charges to the outlet structure and further ground water and embankment monitoring along with resident monitoring of pond condition, insect life and odour.

The ground water monitoring report and full analysis is expected for the both the next Board agenda and the Operations and Monitoring Committee.

1.10 Minden Road

A new trunk water main is being installed between Minden Reservoir and Florence Lane. Work commenced in late July with completion expected mid October 2018. Electrics and controls are being commissioned with completion date of November.

1.11 Omokoroa Water Main Improvements

Construction is still underway on the new water mains, rider mains hydrants, valves and service lines in Hamurana Road, Vivian Street, Myrtle Avenue and Walnut Grove. Also in Munro Road and a short section of Crawford Road. Work has started, due for completion in November.

1.12 Western Supply Zone Water Main Improvements

Upgrade water mains along Beach Road, Waihi Beach and replace water mains attached to Tuapo Stream Bridge and Waitekohe Bridge on SH2. Also replace a short section of cross country water main between Lund Road and Hot Springs Road. Work is planned for construction prior to mid-December. The start date on this will not occur until January 2019.

1.13 Two Mile Creek Update - Upstream Dillon Street Bridge

Regional Council Consent was lodged in June 2017. Two parties did not sign in favour of applying for Resource Consent.

Regional Council requested further information be supplied by WBOPDC including modelling of the effects of the new channel on the 100-year flood and environmental and ecological issues with the new concrete channel. These assessments are now complete and final information has been provided to BOPRC. Feedback received from the BOPRC and draft Consent conditions have been finalised.

Regional Council has provided the resource consent. So ready to go from this perspective.

Due to the creek being located in a floodable zone, a separate Resource Consent is required from WBOPDC. The Consent has been lodged and Council staff have been working with two property owners regarding submissions. One submission has been resolved, the other one is still in negotiation. The consent is expected to be granted in September 2018.

Direction being given to WBOPDC resource consent manager to proceed with arranging a commissioner to hold a hearing to deal with the one party who is objecting to the proposal based on other development issues with their land.

1.14 Maketu Stormwater Catchment Areas

Inspections are complete, spraying to commence once auditing has finished.

1.15 Comprehensive Stormwater Consents - Eastern Zone

The Catchment Management Plan for the Eastern Catchment is currently out for consultation. The Eastern Zone includes the urban areas of Maketu, Te Puke, Pukehina and Paengaroa. The Catchment Management Plan will form the basis for the Comprehensive Stormwater Consent Application.

Council has received good feedback to date.

1.16 Te Puke Wastewater Treatment Plant Resource Consent Renewal

The application to renew the Discharge Consent for the Te Puke Wastewater Treatment Plant has been lodged with the Bay of Plenty Regional Council. The application seeks a 35-year term. Timeframes for notification of the Consent application and hearings have not yet been set by Regional Council. Due to large workloads at Regional Council, there may be some delays in the processing of the Consent application. However, because the Consent was lodged 6 months prior to its expiry, Council can continue to operate the treatment plant under the current Consent, until the Consent application process is complete.

The draft Consent conditions submitted with the Consent requires Council to look at alternative options for the long term discharge of the treated wastewater from the Te Puke Wastewater Treatment Plant. A working group has been formed, which includes Tangata Whenua, Councillors and Community Board representatives.

The group has been working to narrow down suitable sites for different disposal options including wetlands, pasture, forestry and reserve land. They have reduced the lists based on a set of criteria down to a short list for each option. These will now be used for a high level engineering feasibility assessment. The engineering feasibility is expected to be completed by December.

Staff are currently working on engineering a feasibility study and will present back to the group at the December meeting.

1.17 Te Puke Water Main Improvements

Installation of new water mains in Moehau Street and Edgehill Place commenced late September 2018. This is due for completion late December.

2. Reserves

2.1 Kauri Point Jetty – Walkway Re-Decking

No change from previous - Walkway re-decking timing is dependent on landslip / road reinstatement access therefore likely to be deferred to 2019/2020.

2.2 Kauri Point Slip Repairs

A proposal from consultants to undertake the design has been accepted. The scope will enable alternative procurement options to be considered.

2.3 Opureora Jetty Renewal

No change from previous - Detailed design is underway. Subject to tender process & pricing, the jetty construction will be undertaken this financial year.

2.4 Haiku Park to Henry Road Cycleway/Walkway

The information/interpretation sign-board design has been completed and installation pricing is now underway. Installation before Christmas subject to procurement process and contractor availability.

2.5 Omokoroa to Tauranga Cycleway

Refer to the PCG Report in the Information Pack for details on each section. Sections 1 & 2 (through to Lynley Park) have been completed.

Omokoroa User Statistics as follows:

	Total Traffic for the Analysed Period	Daily Average	Busiest Day of the Week	Busiest Month of the Year	Distribution	
					IN	OUT
Pedestrians	53,074	107	Sunday	December 17: 5,748	57	43
Cyclists	17,916	36	Sunday	January 18: 1,691	48	52

IN: Towards Omokoroa Beach

OUT: Towards Tauranga



Section 3: Lynley Park to railway - The archaeological authority application remains delayed while further information required by Heritage New Zealand is provided. This will be resubmitted soon.

Section 4: Tamihana Park to Kiwirail Bridge – Final surfacing along this section was recently completed although the track remains closed until all Kiwirail approvals & lease agreement in place. Powerco and Ultra Fast Fibre have finished installing buried ducting along this section to provide services for future Omokoroa growth.

The official opening of this section will be coordinated with the Plummers Point section to Huharua Park so that a route destination is enabled. Completion now expected March/April 2019.

Section 5: Bridge across Mangawhai inlet – completed but the track will remain closed until the cycleway connection with Huharua Park is in place.

Section 6: Plummers Point trail from bridge to Huharua Park is now under construction with completion expected March/April 2019.

A bridge to cross the gap between the esplanade and Huharua Park has been installed which now provides a link between Huharua Park and the esplanade reserve fronting Pats Lane. **Attachment A**

NOTE: The commuter route section proposed to connect between Bridge1 and Plummers Point Road is not being constructed until funding is confirmed and public access enabled (legalisation process also required).

Section 24: Wairoa Bridge – Tender evaluations are underway for the Wairoa River Crossing.

2.6 Omokoroa Sportsground Playground

Installation of play equipment is well underway. The initial stage completion will be open to the public by Christmas and a formal opening will be arranged (date yet to be confirmed).

The Omokoroa Community Board has allocated additional \$100,000 funding to achieve the majority of the concept design from which staff are seeking to procure the net/bridge play structure across the skate-path.

2.7 Omokoroa Ferry to Opureora/Matakana Island – Facilities Upgrade

The bulletin board (confirmed by the Island community) is to be installed at the Opureora Boat Ramp. Installation has been delayed but now expect this to be installed November/December prior to Christmas.

2.8 Omokoroa Slips

There has been no change in the situation of those most affected by slips in 2017.

A proposal to repair a slip from No 69 Omokoroa Road onto Council walkway has been approved in principle. As of late on 26 October, the owner advised the repair is likely to take the form of a tied back timber pole structure.

2.9 Omokoroa Reserves Development Project Funding: \$350,000

The funding in 2018/19 is for reserve development. A recent Omokoroa Community Board workshop supports the following allocations (three items):

- Precious Reserve \$50k of earthworks / site filling / landscaping development. The joint Consent process with the Omokoroa Golf Club is underway.
- Sports Ground reserve - \$50k new path between playground and linking to new facility building – initial design work is underway to confirm route and specification.
- Sports Ground reserve - \$100k added to playground project – as per the playground update, staff are investigating the procurement of a rope tunnel bridge structure across the skate path nearby (as per the concept plan).

2.10 Damaged walkway reserve land - Ruamoana Place to Bramley Drive

As at 1 Nov 2018, the clean up and restoration works are 95% complete. Additional works have been added to the final restoration works. This includes a set of steps to replace existing steps that are nearing the end of life.

Concrete pathway and access repairs remain to be completed. The opening of the walkway occurred on 4 December.

2.11 Opuereora Marae Public Toilet

Staff are working through a quote the maintenance contractor to undertake repairs to the toilet building.

Timing is now likely to be early next year subject to contractor resource availability and the outcome of the asbestos inspection currently being undertaken.

2.12 Waihi Beach Cycleways

Reserves Management Plan has now been ratified by Council resolution; 1 November 2018. This included a decision for the Plom Road to Anzac Bay section to remain status quo – no new construction.

Planning processes continue to progress a shared use loop trail through the water catchment reserve. Construction timing dependent on Archaeological Authority application processing timeframe and funding.

Detailed design is being undertaken for a clip-on cycleway bridge at 3-Mile creek (Seaforth Road).

Land owner discussion is continuing for the Waihi to Waihi Beach Cycle Trail.

2.13 Trig Walkway Use Statistics

Total Traffic for the period analysed:	71,228
Daily average:	156
Weekdays:	137
Weekends:	202
Max average value January:	286
Min average value August:	89

2.14 Waihi Beach Dam – New Toilet & Site Improvement Concept Plan

Following onsite investigations with staff and the Board Chair, it was agreed to locate the ex Wilson Road Exeloo Toilet adjacent to the old depot building. It is proposed to add other features during this development including footpath connections, converting the buildings "lean to" into a recreation space trail head (undercover table/ seating, signage, potential BBQ facilities, bike racks). It is also proposed that community artists may wish to paint artworks onto the building as a community led project. **Attachment B**

The Project was approved in the LTP at \$200,000 funded 50% Council and 50% external. External funding has not yet been received. Accordingly, the exeloo, building changes and path can proceed at this stage but the carpark extension is subject to funding.

2.15 Dotterel Point Reserve Capital Development (Pukehina)

No change from previous report - The septic tank effluent discharge beyond consented limits continues, but usually only during the weekends. The minor improvements implemented will be monitored to observe only change in discharge volumes.

Monitoring of the system will remain ongoing and likely to remain this way until the Surf Club begin construction of their new facilities, the timing of which is subject to their funding being secured.

3. Strategic Property

3.1 Katikati Library

Currently considering design of safety solutions to enable code of compliance certificate to be issued.

3.2 Te Puke War Memorial Hall

The work on the earthquake strengthening of the Hall is complete. However, the final account for this work still remains in dispute and being worked through.

3.3 Omokoroa Library

Staff, consultants and the Omokoroa Sports Society met in November to finalise the detailed design of the structure.

The architect is adding the proposed floor area for the Library & Service Centre to the concept design of the sports pavilion.

The Consent has been issued for the building and a draft MoU is in place with the Omokoroa Sports Society and pricing will occur over the next couple of months.

4. Engineering & Special Projects

4.1 Omokoroa Industrial Road – Stormwater Detention Pond Investigation, Design & Construction

Following the draft Scheme Assessment report for the industrial road, Harrison Grierson has been asked to prepare the options for servicing the properties at the end of the industrial road so the property owners can develop their land in future. Options are also being investigated for building the new stormwater pond between the industrial road and State Highway 2. NZTA, BOPRC and other stakeholders will be consulted once the draft scheme plans are completed.

We are expecting that the final design of the industrial road will be completed by the end of this year with the construction work commencing in March 2019 and completed by end of December 2019. The timing for the design and construction of the stormwater pond will be dependent on resource consent and land acquisition.

4.2 Omokoroa Road Urbanisation – Western Avenue to Tralee Street

The section of Omokoroa Road from Western Avenue to Tralee Street including the Tralee Street intersection is currently being designed for construction in the 2018/19 and 2019/20 financial years.

The current Omokoroa Road will be widened from 7.0m to 11.5m with provision for two lanes of traffic in each direction with right turning facilities at several intersections. The road will include 1.5m footpath on the western side and 2.5m shared pedestrian and cycle path on the eastern side. There will be several bus stops placed at strategic locations on both sides of the road. Lighting will be included to illuminate both the on road traffic and off road pedestrian and cycle traffic. Power along the road is planned to be undergrounded and the space between kerb and channel and road boundary will be either grassed or landscaped and planted similar to the section south of Western Avenue. Tralee Street intersection will include a roundabout to facilitate traffic movements and improve safety of the intersection. Timing of the roundabout and the design is currently under consideration.

4.3 Omokoroa Stormwater PO2 Construction

The Contract for the construction of the Omokoroa Pond has been awarded to Map Projects Contractors for \$3.04 million. The physical works will commence on 5 November and expected to be completed by the end of April 2019. When completed, the pond will accommodate stormwater runoff from the residential development of Special Housing Area, Goldstone Block and Neil Group block and areas beyond the currently zoned urban land. The Project includes extensive planting in the gully and access tracks.

4.4 Te Puke Highways – Pah Road Slip Reinstatement

Resource Consent has finally been granted by the BOPRC for the reinstatement of the Pah Road Slip. Opus is now preparing the tender documents and inviting tenders for the construction work. NZTA has undertaken to manage the tendering process and the awarding of the Contract. Once the Contract has been awarded, NZTA and Opus will project manage this project. The physical construction work is respected to commence in February 2019 and completed by June 2019.

5. Emergency Management

5.1 Exercise Shakeout

New Zealand ShakeOut, our national earthquake drill and tsunami hīkoi, took place on Thursday 18 October 2018 at 9:30am. ShakeOut is held across the world to remind people of the right action to take during an earthquake, Drop, Cover and Hold - and to practise a tsunami hīkoi (evacuation) if in a coastal area. We had a total of just under 64,000 people take part in the Bay of Plenty, which was higher than the national average (23% v 19%).

5.2 Exercise Ranginui

On 17 November 2018, WBOP Council staff undertook a practical response exercise as part of building their capability to manage responses. This exercise is a learning opportunity facilitated by EMBOP, centred on the scenario of severe weather, flooding and landslides. It will take place in the Western Zone Emergency Operations Centre (EOC) Chambers, and will involve all EOC staff. The aims of the exercise are for EOC staff to use EMBOP's recent developed Checklist Compendium to become familiar, practiced and confident with their roles, and with the key EOC processes involved in the development of their function team's outputs. All Community Response Teams have been invited to have representatives observe in the exercise.

5.3 Waihi Beach

Emergency Management Bay of Plenty met with the Waihi and Waihi Beach Community Response Teams in September and October.

5.4 Ōmokoroa

Emergency Management Bay of Plenty engaged with the Community Response Team over August - September to progress the review of the Response Plan. Opportunities to promote the plan at a local event are now being sought.

5.5 Katikati

The Community Response Plan has been finalised. Opportunities to promote the plan at a local event are now being sought.

5.6 Maketū

EMBOP has met with Maketū Community Champions who are progressing the Community Response Plan. A public meeting has been tentatively planned for mid-November 2018.

5.7 Te Puke

The Te Puke Community Response Plan is in its final update stage. The Community Response Team is currently identifying a local event to promote the team.

6. Roothing

6.1 Katikati Bypass Update

Please refer to the attached information from NZTA.

Attachment C

The Katikati Bypass does not achieve a high alignment with the Government Policy Statement on Transport and is unlikely to proceed in the short to medium term. NZTA are indicating interim works on the existing alignment. The scope and timing of the works is yet to be advised.

The estimate for the bypass is \$87M.

6.2 One Network Maintenance Contract (ONMC)

Refer to OP15 Information Pack.

6.3 Omokoroa Road Construction - State Highway to Railway

The Omokoroa Road upgrade has been an exceptionally complex project due to weather delays, shortage of construction crews, roundabout and intersection builds, adjoining developer requests and the construction of multiple underground services with different utility authority ownership.

Most of the new road pavement has now been completed.

The \$12.9 million project, with the physical works beginning early in 2017, also hit setbacks with the discovery of multiple archaeological sites and the removal of redundant asbestos water main pipes requiring specialist handling and disposal.

Underground services installed during the construction have included new water mains, a new gravity sewer main, a new storm water main, new road culverts, communications and power cables, Ultrafast broadband fibre optic cabling and the relocation of sections of the Omokoroa sewer transfer main.

The sewer transfer main airvalue, which was situated under the road shoulder, has now been relocated during an overnight shutdown.

The remaining construction works include the street light installations, sections of the cycleway, berm top soiling, second coat surfacing and final pavement markings. A section of the cycleway will not be surfaced with concrete in the area adjacent to the planned industrial road intersection because its final level will be determined by the new kerbing levels when they are designed and constructed. The roads chip seal surfaces will be getting their second coat seals applied during November/December and an asphalt surface will be applied to the Omokoroa Carriers entranceway intersection to accommodate the heavy traffic turning requirements. The reseal is being delayed to allow the first coat as much time as possible to cure before the second coat is applied, as this should improve the outcome by reducing the bitumen bleeding risks. The projects target completion date is still 20 December 2018 except for the sewer main duplication into the transfer station, this will depend on suitably qualified drain layers being available to undertake the work in the New Year.

The vegetation maintenance requirements and levels of service for this area are being developed. In the short term this will include berm mowing and after the developers maintenance period ends the planted embankments requirements.

6.4 Maketu Road Proposed Cycle Trail

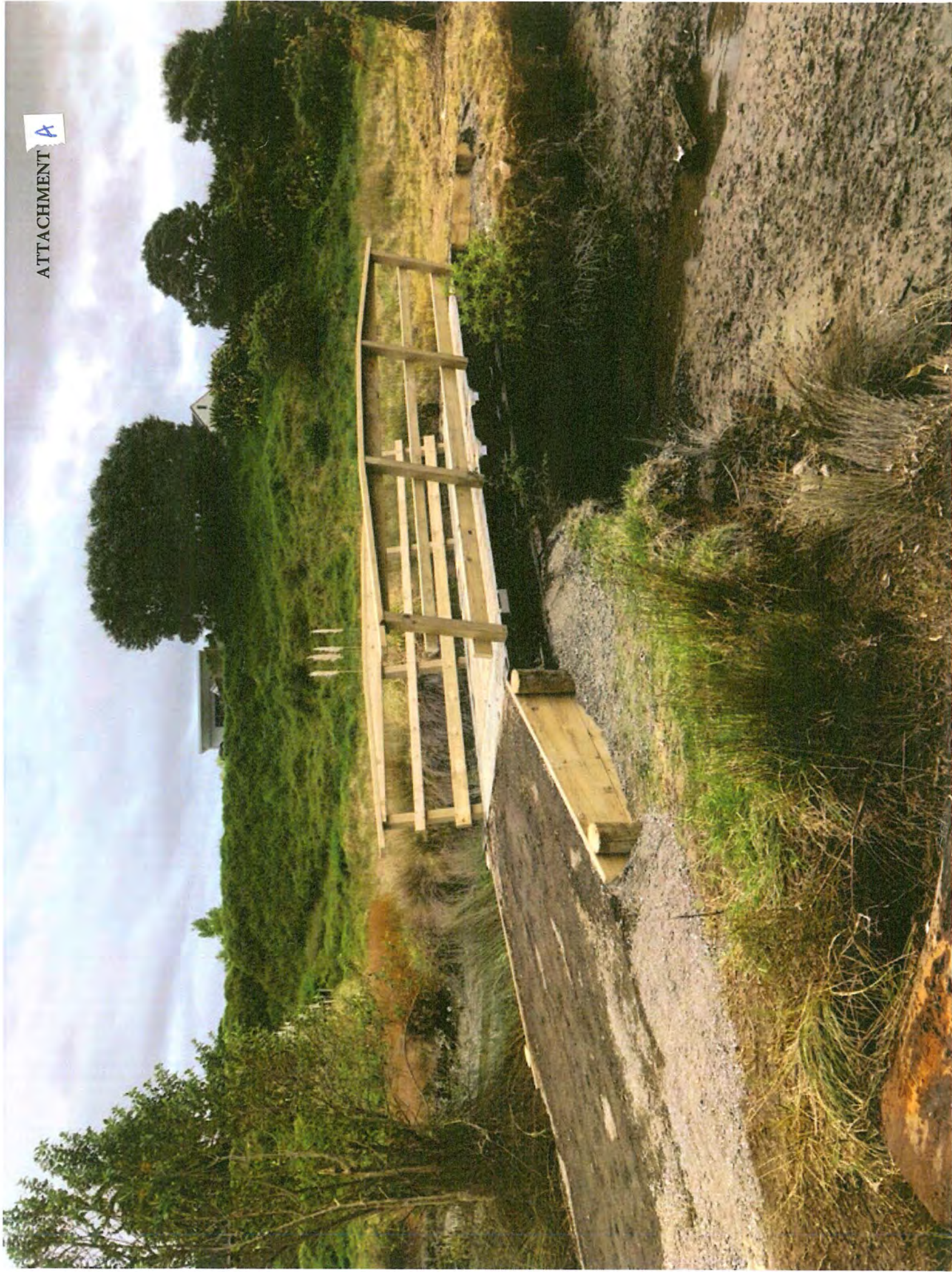
Staff and Councillor Marsh met the landowner to discuss options to construct the cycleway partly over private property. This was unsuccessful.

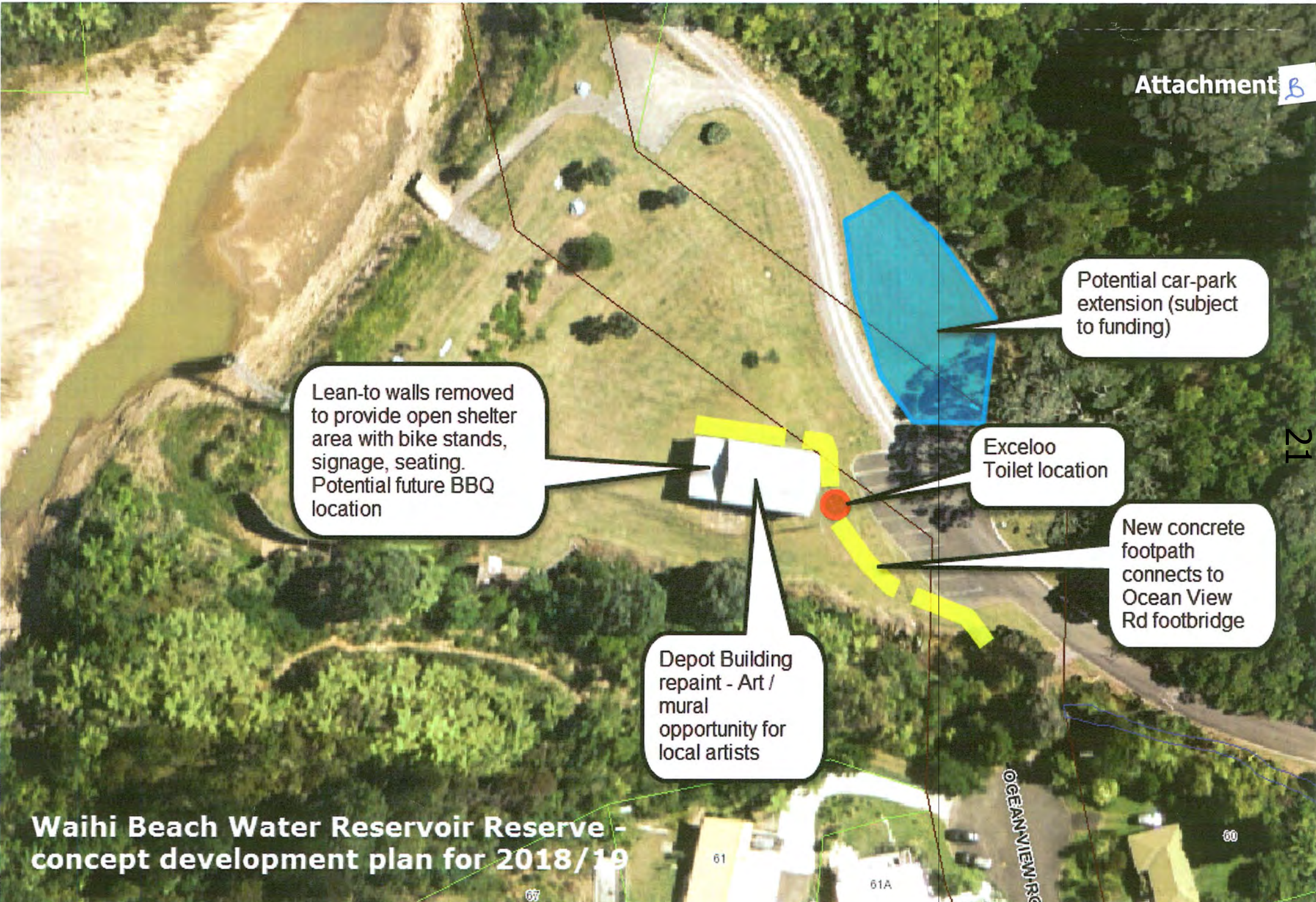
The cycleway alignment will be designed and estimated based on three options:

- a) Wetlands side Maketu to Kaituna Road
- b) Estuary side Maketu to Kaituna Road (previously designed and estimated)
- c) Wetland side from Maketu to a crossing point with good visibility then coastal side to Kaituna Road.

Staff are waiting for the options, design and updated estimate from WestLink.

ATTACHMENT A





Lean-to walls removed to provide open shelter area with bike stands, signage, seating. Potential future BBQ location

Depot Building repaint - Art / mural opportunity for local artists

Potential car-park extension (subject to funding)

Exceloo Toilet location

New concrete footpath connects to Ocean View Rd footbridge

Waihi Beach Water Reservoir Reserve - concept development plan for 2018/19



19 October 2018

Level 3, Harrington House
32 Harrington Street
PO Box 13-055, Tauranga Central
Tauranga 3141
New Zealand
T 64 7 927 6009
F 64 7 578 2909
www.nzta.govt.nz

SH2 Waihi to Tauranga programme

We are writing to update you on the re-evaluation process for SH2 between Waihi and Tauranga.

The work to align the programme with the new priorities set out in the Government Policy Statement on Land Transport (GPS) is now complete. The government has a new vision for our land transport system focussing on safety, access, the environment and value for money.

The Transport Agency supports the government priorities by investing in projects which improve walking, cycling and public transport facilities, and provides transport choices.

The NZ Transport Agency Board has now endorsed the general approach for the future plans for this corridor. The plans include delivering short-term safety improvements and more reliable access on the existing state highway, while continuing to work to protect land for a new long-term route.

Outcome of the re-evaluation

The key deliverables for the SH2 corridor between Waihi and Tauranga are to dramatically improve safety and provide improved transport choices for the growing communities and visitors travelling into Tauranga.

In Katikati, we will work with the community to design solutions to improve access and make the town centre a better place to live by improving traffic management.

Between Waihi and Omokoroa, we will focus on safety improvements, such as flexible median barriers, wide centre lines and protecting people from hazards on the roadsides to make people's journeys safer. Some of this work is already underway with the \$101 million Waihi to Omokoroa safety improvements package.

We will look to extend this work to between Omokoroa and Te Puna. We will start with safety improvements including an upgrade of the Omokoroa intersection. We will work with partners to improve and encourage public transport use including allowing greater space within the existing corridor for public transport and high occupancy vehicles (more than two people).

We have confirmed the need for a new state highway on the alignment of Tauranga Northern Link. The new plans include a two-lane route, one lane in each direction, between Te Puna and Tauranga for general traffic. The form of any additional lanes may include a range of uses including enabling public transport and high occupancy vehicles to cater for growth to the west of the city. This will

create a total of four lanes on the corridor. The construction timing and form of the new route will depend on growth and funding priorities across the rest of the country.

We will continue to hold the land designations which protect the route between Omokoroa and Te Puna, the Katikati bypass and for the Tauranga Northern Link. This means that we will still have the ability to construct in these designations when the timing is right.

Next steps

As outlined above, we will continue to progress the online safety improvements work already underway and will start work on the other improvements including an upgrade of the Omokoroa intersection.

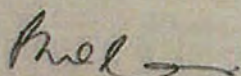
The exact plans and timing for the other projects outlined above are still being worked through, however we will not be starting from scratch. We will be using existing information from current business cases to inform our approaches. We understand the urgency needed on SH2 between Waihi and Te Puna and this work is being prioritised.

In December, once the re-evaluations for all 12 corridors across the country are complete, we will consider in more detail the exact plans and timing for these projects including available funding.

We are also undergoing a speed limit review of SH2 between Katikati and Bethlehem and will be consulting with the community on this next month.

We appreciate your patience while we have carried out this important work and recognise the frustration that uncertainty can bring. We have been working as quickly as we can to align with new government priorities and provide the best outcomes and value for money for communities now and in the future.

Yours sincerely



Parekawhia McLean

Director Regional Relationships – Central North Island