



**LEGEND**

-  2.5m wide boardwalk
-  Mitigation weed control and re-vegetation area

**Zone 2**

**General**

- Length of boardwalk over dune vegetation is 127m.
- Boardwalk is 2.5m wide.
- 318m<sup>2</sup> of dune vegetation area may be lost to the boardwalk structure.
- At 3 plants per m<sup>2</sup> and at a 1:1 ratio, WBOPDC commit to return a minimum of 954 plants to the site.
- Timing for weed control and re-vegetation will depend on when boardwalk construction is completed - work will be carried out in the season after construction is complete.

**Methodology**

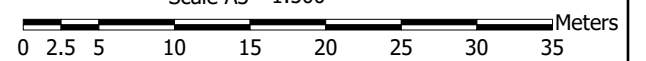
- After boardwalk construction spray at least twice for exotic weed species within Zone 2 at monthly intervals prior to re-vegetation.
- Working from the boardwalk outwards, plant a 1:1 ratio of a combination of *Wiwi* and *Pohuehue* (using approx. 80% of the mitigation plants) in the first planting season at 3 plants per m<sup>2</sup> within the mitigation area in existing vegetation gaps, and gaps created by the removal of weeds.
- Monitoring to be carried out over the first and second planting seasons, with in-fill of plants that do not survive.
- In the winter following the *Wiwi* and *Pohuehue* planting, add the balance 20% of mitigation plants as *Coastal Five Finger*, *Mahoe* and *Sand Coprosma* plantings.
- Exotic species weed control alongside general reserve maintenance to be undertaken in the second growing season.
- Removal of exotic weed species e.g. *agapanthus*.



Produced using ArcMap by the Western Bay of Plenty District Council GIS Team.  
 Crown copyright reserved. LINZ digital license no. HN/352200/03 & TD093522.  
 Location of services is indicative only. Council accepts no liability for any error.  
 Archaeological data supplied by NZ Archaeological Assoc/Dept. of Conservation.

Email: [gis@westernbay.govt.nz](mailto:gis@westernbay.govt.nz)  
 Date: 2/7/2018  
 Operator: mlb  
 Map: E:\Shape\MLB\2017\Projects\Waihi Beach Cycleway-Walkway\Brighton Road to Reserve - Zone 2.aprx

Scale A3 - 1:500



**WAIHI BEACH CYCLE/WALKWAY  
 BRIGHTON ROAD TO RESERVE  
 ZONE 2**

