

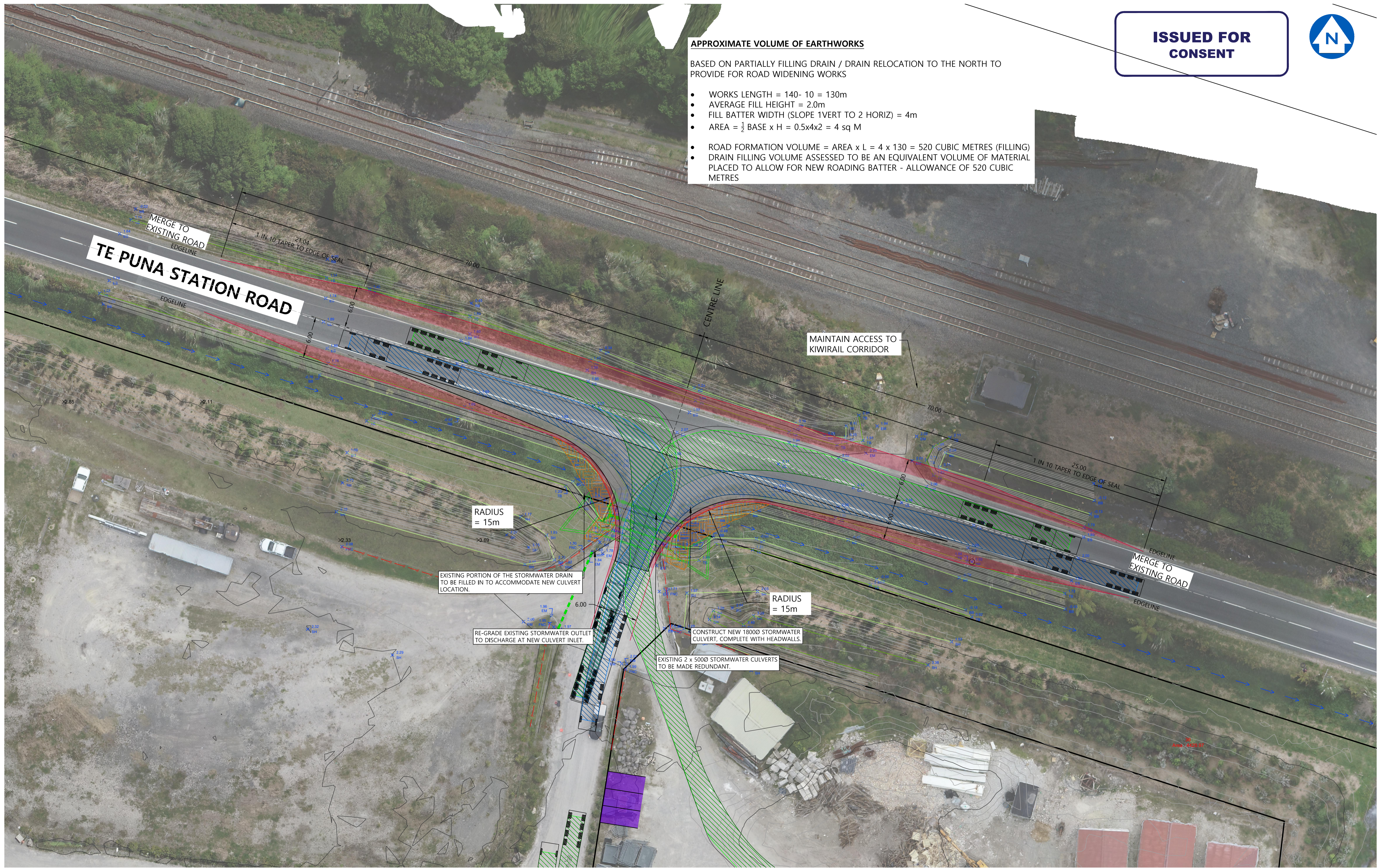
**ISSUED FOR
CONSENT**



APPROXIMATE VOLUME OF EARTHWORKS

BASED ON PARTIALLY FILLING DRAIN / DRAIN RELOCATION TO THE NORTH TO PROVIDE FOR ROAD WIDENING WORKS

- WORKS LENGTH = 140 - 10 = 130m
- AVERAGE FILL HEIGHT = 2.0m
- FILL BATTER WIDTH (SLOPE 1 VERT TO 2 HORIZ) = 4m
- AREA = $\frac{1}{2}$ BASE x H = $0.5 \times 4 \times 2 = 4$ sq M
- ROAD FORMATION VOLUME = AREA x L = $4 \times 130 = 520$ CUBIC METRES (FILLING)
- DRAIN FILLING VOLUME ASSESSED TO BE AN EQUIVALENT VOLUME OF MATERIAL PLACED TO ALLOW FOR NEW ROADING BATTER - ALLOWANCE OF 520 CUBIC METRES



No.	Date	Drawn	Approved	Issue/Revision
A	16/10/23	SB	TH	FOR INFORMATION

TINEX GROUP Ltd
245 TE PUNA STATION ROAD
TE PUNA

INDUSTRIAL DEVELOPMENT
LOT 2 DP22158
DIAGRAM E ACCESS & EARTHWORKS VOLUMES

Drawing No. 423022-CIV-D001	
Sheet No. 02	Issue A
A1 SCALE: 1:250	

Stratum
CONSULTANTS

OFFICE: TAURANGA CONTACT: 07 571 4500