

SOLID WASTE

OVERVIEW

Our Solid Waste Strategy sets out our sustainable development approach to the management of solid waste activities across our District. Human activity is inextricably linked to the health of our natural environment. A healthy environment is essential for our overall well-being and prosperity. With our population growing, so demands on our natural resources will increase. The challenge is to manage our impacts on the environment and reduce consumption and waste.

The Solid Waste Strategy aligns to Council's Waste Management and Minimisation Plan (adopted in December 2017 as part of this LTP, to align with the Waste Management and Minimisation Plan which was adopted in December 2017. The primary aim of this Strategy is to reduce the amount of waste produced by reducing, reusing, recycling and recovering waste going to landfill. We will do this through effective waste management practices that minimise waste to landfill and encouraging efficient use of resources to reduce environmental harm.

Our Strategy and actions have been developed in response to the changing waste management environment. Our community expectations have changed, with an increasing awareness and support for Council to take a more substantial role in waste management. Council is planning to investigate a ratepayer funded kerbside recycling and rubbish collection service to replace the Omokoroa greenwaste facility with a new green waste and recycling facility.

Our strategy seeks to progress our Waste Management and Minimisation Plan to reduce waste to landfill. The Plan is available on our website at:

www.westernbay.govt.nz/Documents/Services/A-Z

There are no significant variations between the Waste Management and Minimisation Plan and this Solid Waste Strategy. The Strategy will be reviewed in 2022/23.

We see our role continuing to be to encourage and support the community to ensure individuals and businesses are the most responsible. Our 'polluter pays' principle requires that those producing waste are responsible for its disposal and that by paying for its disposal people are encouraged to adopt more responsible attitudes towards waste minimisation.

The Waste Minimisation Plan requires that waste disposed of to landfills to generate funding to help local government and businesses reduce the amount of waste. Territorial authorities receive a proportion of the total money collected through the waste disposal levy and these payments are based on population basis. The money must be spent on promoting or achieving waste minimisation in accordance with our Waste Management and Minimisation Plan. We will continue to investigate suitable waste-related projects that could be either District-wide or benefit a specific area, subject to approval through the Annual Plan or Long Term Plan processes.

Free drop-off points for recycling and hazardous waste are available and operated by Community Recycling Centres (CRCs).

- Glass bottles and jars
- Paper, cardboard and plastic

Please see page xvii - xxvii from the Long Term Plan Amendment 2018-2028 for the updated information.

• Ferrous metal

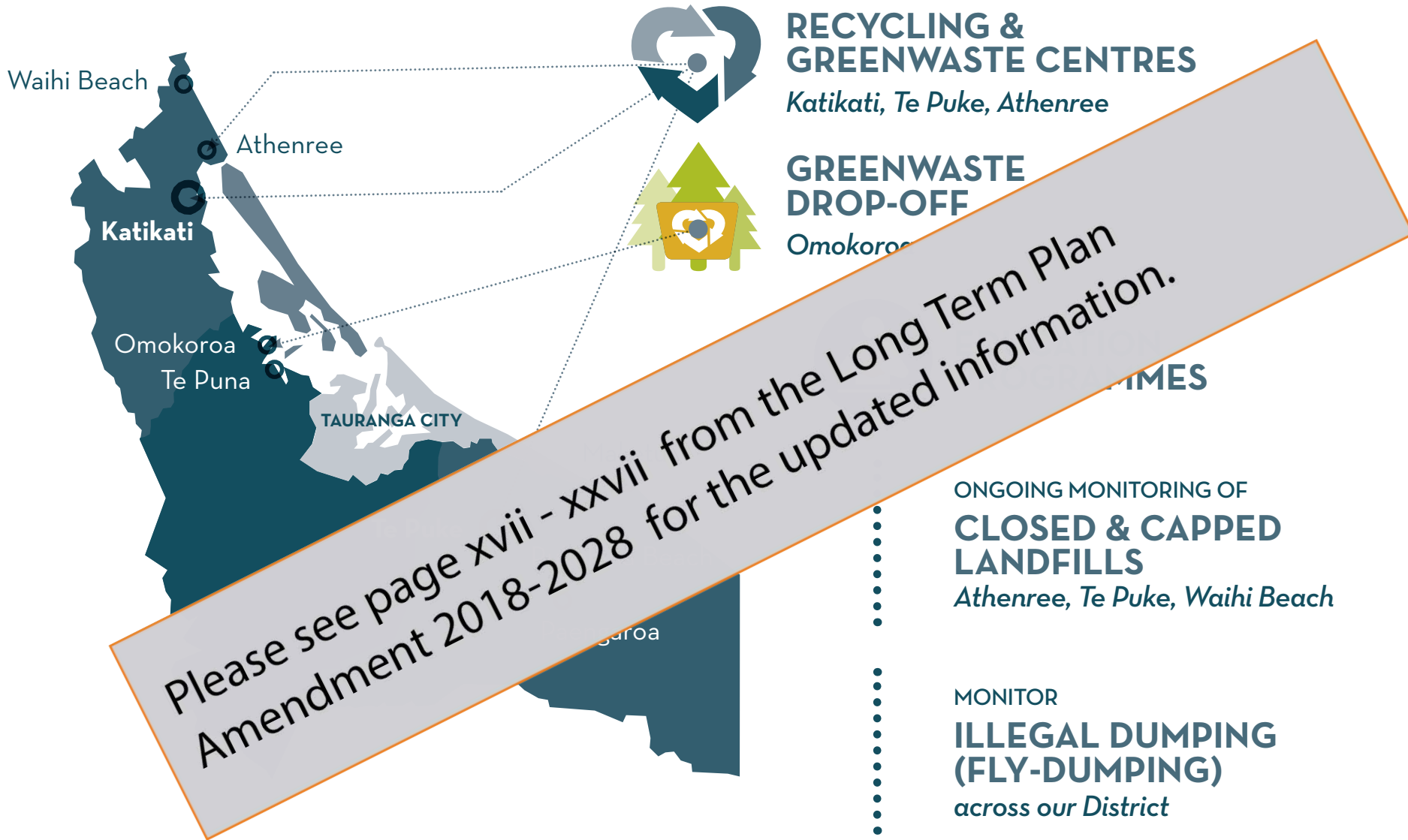
• Footwear (a fee applies).

and we offer greenwaste disposal services at the above sites and also Omokoroa at a fee.

Greenwaste is collected from the drop-off points by contractors for composting. At the recycling centres we also take small quantities of domestic hazardous waste.

We maintain closed and capped landfills at Te Puke, Waihi Beach and Athenree in accordance with consent conditions.

WHAT WE PROVIDE



WHY WE PROVIDE IT

OUR COMMUNITY OUTCOME

Effective waste management practices that minimise waste to landfill and encourage efficient use of resources to reduce environmental harm.

OUR GOALS

- Reduce and recover more waste
- Apply the latest proven and cost effective waste management and minimisation approaches
- To collect information to enable decision making
- To create benefit for our community.

HOW WE WILL ACHIEVE OUR COMMUNITY OUTCOME

GOAL	OUR APPROACH	OUR ROLE
Reduce and recover more waste.	<p>Advocacy</p> <p>Advocate where possible for stronger minimisation of waste accompanied by</p>	Advocate
	<p>Education and information</p> <p>Education and information programmes towards waste minimisation and management</p>	
	<p>Partnership</p> <p>Work with partners on matters, for example Tauranga City Council the Bay of Plenty Waste Liaison Forum, Ministry for the Environment, Environmental Trust, Waste Watchers, Pare Kore, Zero Waste Education Ltd and waste management organisations to ensure a coordinated, consistent and up-to-date response to education and information</p>	Partner
	<p>Partnership</p> <p>Implement the waste minimisation education programme in schools across our District.</p> <p>Advocate for central government to assume responsibility for waste minimisation education as a core part of the education curriculum.</p>	Partner/Advocate
	<p>Community</p> <p>Assist in funding waste minimisation education programmes for the wider community, targeting community groups and organisations in the first instance, as well as community events.</p>	Partner

Please see page xvii - xxvii from the Long Term Plan Amendment 2018-2028 for the updated information.

GOAL	OUR APPROACH	OUR ROLE
Reduce and recover more waste (cont).	<p>Business and rural sectors</p> <p>Support key business and rural sector groups to establish waste minimisation education programmes that each sector can own and sustain into the future.</p>	Facilitator/Advocate
	<p>Communication</p> <p>Provide user-friendly access to waste services information available through our libraries and service website and our online Waste Services Directory. We respond to waste services and information requests.</p>	
	<p>Welcome pack</p> <p>Include information on weekly kerbside collections and drop-off facilities for all new residents in our District.</p>	
	<p>Signage</p> <p>Ensure that industry-standard signage is provided to identify and reduce fly-tipping and dumping trouble spots.</p>	Partner
	<p>Composting/worm composting</p> <p>Educate communities on the benefits of composting organic waste and greenwaste. Provide workshops to help residents form composting units and partner to reduce the amount of waste for composting off site.</p>	Advocate/Facilitator
	<p>Where proposals for new services are proposed by private or community sectors, we will investigate whether these can be used to replace our operated services.</p>	Lead
	<p>Introduction of recycling</p> <p>Investigate the introduction of a kerbside rubbish and recycling service procured and managed by Council, to replace the current privately provided service.</p>	Lead
	<p>Public recycling</p> <p>Subject to community demand and willingness-to-pay, work with community boards to establish public recycling facilities in public places.</p>	Facilitator

Please see page xvii - xxvii from the Long Term Plan Amendment 2018-2028 for the updated information.

GOAL	OUR APPROACH	OUR ROLE
Reduce and recover more waste (cont).	<p>Illegally dumped waste</p> <p>Change attitudes toward fly-dumping by ensuring people know where they can dispose of their waste safely</p> <p>Work with local communities to achieve clean roadsides and waterways</p> <p>Monitor public spaces where fly dumping occurs and where appropriate install mobile closed circuit television cameras at problem sites</p> <p>Pursue infringements and prosecutions where there is sufficient information to support such</p> <p>Waste Management and Minimisation Bylaw</p> <p>Enforce the Waste Management and Minimisation Bylaw to ensure that for the proper disposal of their waste.</p>	Lead
Apply the latest proven and cost effective waste management and minimisation approaches.	<p>Hazardous Waste Management</p> <p>Small quantities (30kg or litres) of household hazardous waste can be taken to the Te Puke centres. All waste must be accompanied by a hazardous waste form that can be ordered from Council customer service.</p> <p>Landfills</p> <p>Continue with the user-pays drop-off sites for specific waste at Karang Road, Te Puke and Waihi Beach</p>	Lead Facilitate/partner Facilitate/partner

Please see page xvii - xxvii from the Long Term Plan Amendment 2018-2028 for the updated information.

GOAL	OUR APPROACH	OUR ROLE
To collect information to enable informed decision making.	<p>Solid Waste Analysis Procedure</p> <p>Undertake regular solid waste audit procedure which will follow the Ministry for the Environment (MfE) Solid Waste Analysis Protocol (SWAP) ¹</p> <p>Monitoring and target setting</p> <p>Set targets for</p> <ul style="list-style-type: none"> • Business waste minimisation • Nappy lady • Pare kore • Kerbside recycling 	Lead
To create benefit for our community.	<p>Community waste initiatives</p> <p>(a) Provide grants to community groups to support initiatives that adopt environmentally sound waste management practices.</p> <p>(b) Support community groups to identify funding sources to establish new initiatives.</p> <p>(c) Support community groups to develop campaigns that contribute to the goals for solid waste by providing local administrative support.</p> <p>(d) Support community actions for the introduction of local awards to recognise outstanding contributions and innovations by communities and businesses to achieving our solid waste goals.</p> <p>Mobile recycling and waste services</p> <p>(c) Provide event organisers with a resource kit to encourage waste reduction and recycling at major events in line with the Western Bay of Plenty Sub-regional Events Strategy.</p> <p>Design principles for new developments</p> <p>Eco-design principles result in well-planned, well-executed and sustainable developments. We support the application of eco-design principles in developments when opportunities are available and will consider the inclusion of these principles in Council plans.</p>	<p>Partner/Advocate/Facilitator</p> <p>Partner/Advocate</p> <p>Partner</p> <p>Advocate</p> <p>Advocate</p> <p>Facilitator</p>

Please see page xvii - xxvii from the Long Term Plan Amendment 2018-2028 for the updated information.

¹It should be noted that the SWAP may not be required if Council contracted kerbside recycling and rubbish collection is implemented as Council will be able to use other methods such as weighing trucks.

WHAT WE ARE PLANNING TO DO

All information from 2020- 2028 includes an adjustment for inflation.

PROJECT NUMBER	PROJECT NAME	\$'000									
		2019	2020	2021	2022	2023	2024	2025	2026	2027	2028
318601	District Solid Waste Waste Minimisation Funding Pool	130	133	136	139	143	147			171	175
318605	Alternative Recycling and Rubbish Collection	25	-	-	-	-				-	-
318606	Envirohub	20	21	21	-					-	-
319902	District-wide Trade Waste Implementation	50	51	52						61	63
344401	Omokoroa Green Waste Facility / Recycling Centre	-	-	52						-	-

MAJOR PROJECTS PLANNED FOR 2018 - 2028

The replacement of Omokoroa's Greenwaste facility includes a \$1.2m allocation towards the replacement of the facility.

Waste Minimisation Funding Pool

This pool of funding allocates \$1.8m over the duration of this plan.

Future projects may include:

- Investigation into Council led kerbside recycling
- Investigate a possible future transfer station
- Investigate additional community recycling
- Investigate opportunities for resource recovery

HOW OUR PLAN

The timing and cost of our projects have been updated since we adopted our 2015 - 2025 Long Term Plan (LTP).

To see how our plan has changed, visit our website for a complete list of the projects/programmes that have been revised or alternatively visit our website www.westernbay.govt.nz.

Please see page xvii - xxvii from the Long Term Plan Amendment 2018-2028 for the updated information.

HOW WE WILL TRACK PROGRESS TOWARDS OUR GOALS

OUTCOME

Effective waste management practices that minimise waste to landfill and encourage efficient use of resources to reduce environmental harm.

GOAL	WE'LL KNOW WE'RE MEETING OUR GOAL IF	ACTUAL			TARGET		
		2017	2019	2020	2021	2022-24	2025-28
<p>Reduce and recover more waste Apply the latest proven and cost effective waste management and minimisation approaches</p> <p>To collect information to enable decision making</p> <p>To create benefit for our community</p>	<p>Key Performance Measure Percentage of actions identified in the Solid Waste Action Plan for the year that have been completed. This identifies the total annual actions required for this strategy. Actions are required within specification and budget.</p>	100%	≥97%	≥97%	≥97%	≥97%	≥97%
	<p>Key Resident Measure Level of customer satisfaction with household rubbish disposal methods.</p>	79%					≥80%
	<p>Supporting Measures Number of initiatives funded by the Ministry for the Environment Waste Minimisation</p>					≥1	≥1
	<p>Percentage of waste recycled or recovered from solid waste two yearly audit. The audit is conducted per the Solid Waste Analysis protocol for the Environment</p>				≥45%	≥47%	≥48%

HOW WE WILL TRACK PROGRESS

WHAT WE PROVIDE	WE'LL KNOW WE'RE MEETING OUR GOAL IF	ACTUAL			TARGET		
		2017	2019	2020	2021	2022-24	2025-28
All Council-owned solid waste facilities' including collection and recycling facilities provided.		0	0	0	0	0	0
Provide and improve recycling services	recycling facilities provided.	4	≥4	≥4	≥4	≥4	≥4
Assist in the provision of opportunities for hazardous waste.	hazardous waste drop off points.	3	3	3	3	3	3

Please see page xvii - xxvii from the Long Term Plan Amendment 2018-2028 for the updated information.

KEY ASSUMPTIONS

ASSUMPTION	RISK	
Council will investigate an increasing role in waste management	Council's waste management role may change during the period of this LTP. Council's future role could be to procure and manage a future kerbside collection in the District and to oversee the development of a transfer station.	Poorly managed change can result in increased costs and project delays, and/or compliance issues with the process.
Solid waste generation rate, including diverted materials	An estimated 640kg per year of municipal solid waste will be generated per person, reducing over the years.	Waste minimisation is not possible action there is a risk to go to landfill.
Solid waste environmental consciousness profile	Communities in the Western Bay district are more conscious of the environment and are taking actions. Communities are demonstrating an increasing willingness to reduce waste.	Changes in community expectations and awareness and is a risk to go to landfill.
Recycling facilities are already reaching capacity.		
Waste Minimisation Act	The Waste Minimisation Act was passed in 1992 and has been amended several times. Additional funding through a waste levy is required to support waste minimisation activities.	Change to the Act could result in reduced funding or the elimination of the waste levy. This may lead to additional costs or a reduction in the services offered.
Waste Management and Minimisation Plan	Council will update the Waste Management and Minimisation Plan as required by the Act.	If the WMMP is not updated every 6 years funding from the Waste Levy may be at risk.
Solid waste changes in technology	Changes in technology may increase costs and reduce impacts on the environment.	Innovative technologies may increase costs in the short term if economies of scale cannot be easily achieved.

Please see page xvii - xxvii from the Long Term Plan Amendment 2018-2028 for the updated information.

DID YOU KNOW

Weights for household appliances	
• Dishwasher - 32kg	• Oven/stove - 75kg
• Dryer - 32kg	• Washing Machine - 45kg
Total percentage by weight of household appliances at Katikati & Waihi Beach Recycling Centres:	
• Glass - 70%	• Plastic - 4%
• Paper - 17%	
Total percentage by weight of household appliances at Te Puke Recycling Centres:	
• Glass - 48%	• Paper - 28%
	• Plastic - 4%

Average weights for recyclable material per loose cubic metre	
• On average: Kg/m ³	• Aluminium: 30kg (Source: Recyclonomics)
• Glass: 220kg (Source: Recyclonomics)	• Steel cans: 90kg (Source: CMA recycling)
• Plastics: 25kg (Source: Recyclonomics + averages)	• Solid steel: 700kg (Source: CMA recycling)
• Cardboard: 90kg (Source: Recyclonomics)	• Food waste - 500g
• Paper: 160kg (Source: Full Circle)	

SIGNIFICANT EFFECTS OF PROVIDING THIS ACTIVITY

WELL-BEING	POSITIVE	NEGATIVE	HOW WE ARE ADDRESSING THESE EFFECTS
Social	<ul style="list-style-type: none"> ✓ Providing recycling facilities promotes environmental consciousness. ✓ Community and school involvement in programmes. ✓ Better awareness of waste minimisation methods fosters improved community health, safety and well-being. ✓ Community participation in services and events provides positive social feedback. 	<ul style="list-style-type: none"> ✗ Under-provision of recycling facilities fails to promote a positive shift in the community's attitude to waste. 	<ul style="list-style-type: none"> • Each main green bin in our District has recycling facilities.
Environmental	<ul style="list-style-type: none"> ✓ The hazardous waste collection removes household quantities potentially harmful substances. ✓ Protection and enhancement of our District's environment. 	<ul style="list-style-type: none"> ✗ Landfilling of waste contributes to climate change. 	<ul style="list-style-type: none"> • We will continue to manage and monitor the closed landfill sites to meet compliance with Resource Consent conditions. • We will not develop additional landfill sites. • We will continue to license and monitor waste collection operators.
Economic	<ul style="list-style-type: none"> ✓ Provision of user-pay services encourages waste generator of waste to use recycling service. 	<ul style="list-style-type: none"> ✗ Increased cost of recycling and disposal services. The cost of recycling services is affected by the world markets for recyclable materials, for example glass and plastic. 	<ul style="list-style-type: none"> • We monitor trends in these markets and revise the expected costs of our recycling services through the Annual Plan or Long Term Plan processes. These costs are weighed against the environmental benefits of recycling.
Cultural	<ul style="list-style-type: none"> ✗ Sensitive 	<ul style="list-style-type: none"> ✗ Waste entering water bodies affects the mauri of the environment. 	<ul style="list-style-type: none"> • We will continue to take enforcement action against fly dumping.

Please see page xvii - xxvii from the Long Term Plan Amendment 2018-2028 for the updated information.

COUNCIL'S ADDITIONAL ASSET REQUIREMENTS

SOLID WASTE

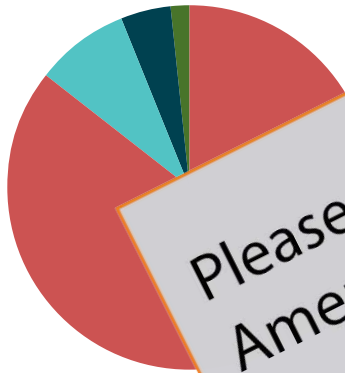
All information from 2020-2028 includes an annual adjustment for inflation.

CAPITAL EXPENDITURE	\$'000								
	2019	2020	2021	2022	2023	2024	2025	2027	2028
To meet additional demand (capacity for future residents - growth)	-	-	52	1,019	20	-	-	-	-
To improve the level of service	-	-	-	-	-	-	-	-	-
To replace existing assets (renewals)	-	-	-	-	-	-	-	-	-
Total capital expenditure	-	-	52	1,019	20	-	-	-	-

WHERE THE MONEY COMES FROM

Please refer to Chapter 5 'Policies, Summaries & Statements' for the Revenue and

FUNDING SOURCES FOR SOLID WASTE



Please see page xvii - xxvii from the Long Term Plan Amendment 2018-2028 for the updated information.