

## What supplies will I need?

In an emergency, you may be stuck at home for three days or more. What supplies will your household need to get through?



**Water for three days or more** (at least 9 litres of water for every person).



**Long-lasting food that doesn't need cooking** (unless you have a camping stove or gas barbecue).

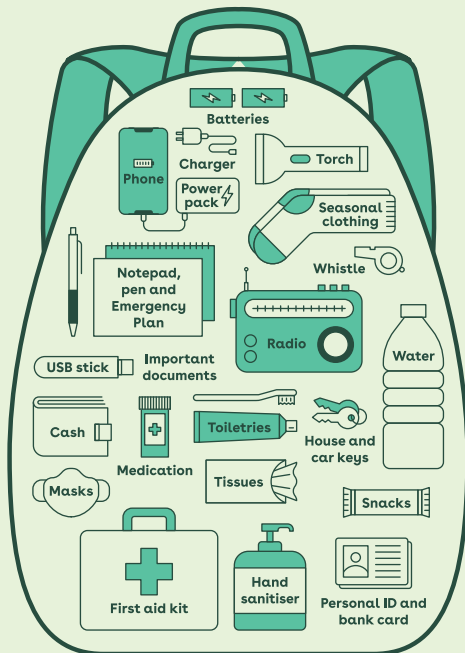


**Toilet paper and large plastic buckets for an emergency toilet.**

## Grab bags

If you need to evacuate in a hurry, every member of the household will need a grab bag for essential supplies to last a few hours.

Don't forget your pets!



## Stay safe, stay informed

### Get Ready

[getready.govt.nz](http://getready.govt.nz)

Te reo Māori version  
[getready.govt.nz/mi\\_NZ](http://getready.govt.nz/mi_NZ)

**GET READY**



### Bay of Plenty Emergency Management

[bopcivildefence.govt.nz](http://bopcivildefence.govt.nz)

[facebook.com/BOPCivilDefence](https://facebook.com/BOPCivilDefence)



### Check in with whānau, friends and neighbours



Download the **Red Cross Hazard App**  
[redcross.org.nz](http://redcross.org.nz)



**Listen to the radio**  
[radio-new-zealand.co.nz](http://radio-new-zealand.co.nz)



### Mobile Alert

Follow the instructions sent automatically to your phone in the event of an emergency



### Western Bay of Plenty District Council Civil Defence

[westernbay.govt.nz/  
community/civil-defence](http://westernbay.govt.nz/community/civil-defence)

**0800 926 732**



# Kia takatu Prepare for an emergency

in the Western Bay of Plenty



**GET READY**

# What would you do in an emergency?

Are you prepared for any of the following situations?



## Hazards in the Western Bay of Plenty

Know the hazards and associated risks in your area.



Tsunami



Earthquake



Volcano



Landslide



Storm



Flood

## Make a plan

Make a household plan with your whānau to get through. Consider elderly and the vulnerable, babies, pets and livestock.

### Names and contact numbers of people in our household:

Name:	<input type="text"/>	Mobile:	<input type="text"/>
Name:	<input type="text"/>	Mobile:	<input type="text"/>
Name:	<input type="text"/>	Mobile:	<input type="text"/>

### Does anyone have special requirements?

Consider mobility, devices or prescription medication.

### Are there any babies or pets in your whānau? What supplies will you need for them?

### Any friends, family or neighbours that might need help in an emergency?

Name:	<input type="text"/>	Mobile:	<input type="text"/>
Name:	<input type="text"/>	Mobile:	<input type="text"/>
Name:	<input type="text"/>	Mobile:	<input type="text"/>

### Important contact numbers

Fire, Police, Ambulance: 111  
 Council: 0800 926 732

Doctors:  Phone:

Others:

### If we can't get home, where will we meet?

Where will you meet if you can't contact each other and are separated? How will you get there?

Who will pick the kids up from school/day care?

Name:	<input type="text"/>	Mobile:	<input type="text"/>
Name:	<input type="text"/>	Mobile:	<input type="text"/>

### If we can't get hold of each other, who will you check in with?

Name:  Mobile:

### If we are stuck at home, do we have emergency supplies for three days? Where are these items stored?

### If we have no power, how will we cook and stay warm?

### If we have no water, what will we do?

People need a minimum of three litres of water a day. How will we cook and clean? Pets also need water.

### If we have to evacuate in a hurry, do we have grab bags for everyone?

Where are the grab bags stored?

### If we have to evacuate, where will we go? Are we in a tsunami evacuation zone?

### Describe where the electricity switchboard and water mains tap are at your home, and how to turn these off.